

## Cantharellus infundibuliformis

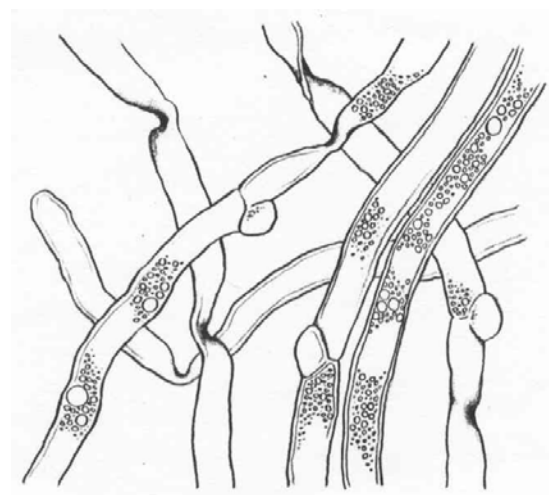
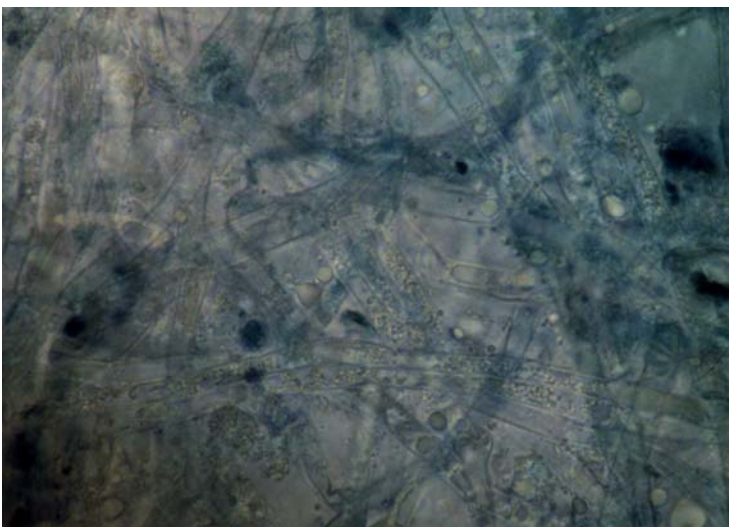
### Tips

Monopodial pinnate root systems, with bent tips. Young tips a pearl colour, becoming more pink with age. Quite large, swollen roottips, smooth to finely grainy, with debris often stuck to the surface. Few, fine emanating hyphae and no strands.



### Outer mantle

Net prosenchyma, cells 5  $\mu\text{m}$  wide, with oil-like bodies frequently throughout cells. Few large clamps with few hyphal junctions, and many hyphae with lots of folds, occasionally a round end on the hyphae.



### Inner mantle

Net synenchyma to non-interlocking irregular synenchyma, 7  $\mu\text{m}$  wide (5 to 8  $\mu\text{m}$ ) and 15  $\mu\text{m}$  long (10 to 25  $\mu\text{m}$ ). Oil-like bodies found sporadically, with no clamps and no ornamentation.

