

# Amanita porphyria

---

## Tips

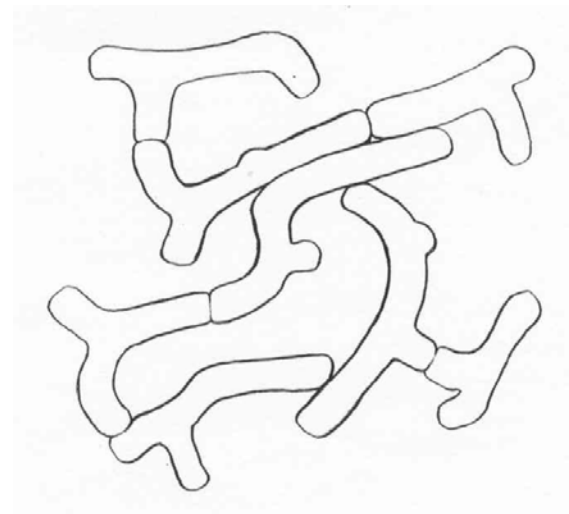
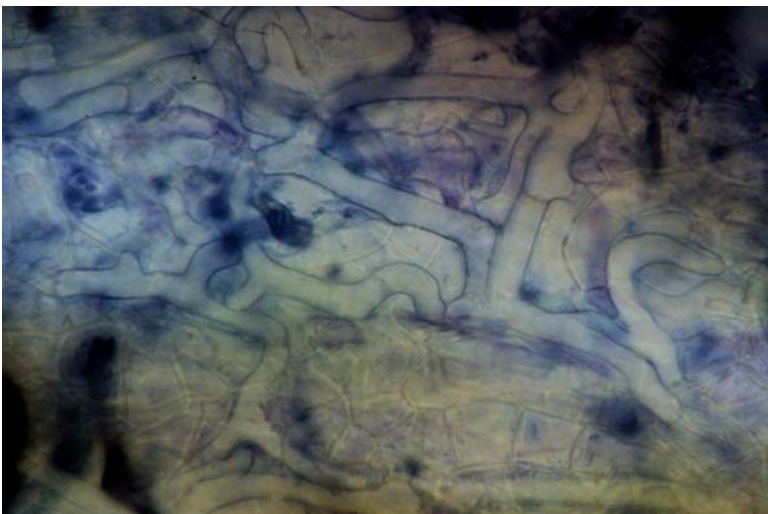
Monopodial pinnate, with bent tips. Young tips with a pearl colour, becoming more white with age. Fine felty texture, somewhat shiny (frosted), with some visibility of the host. Rare restricted point strands.



---

## Outer mantle

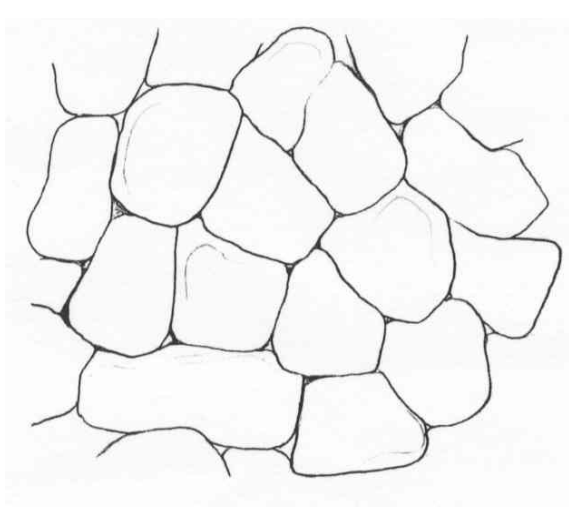
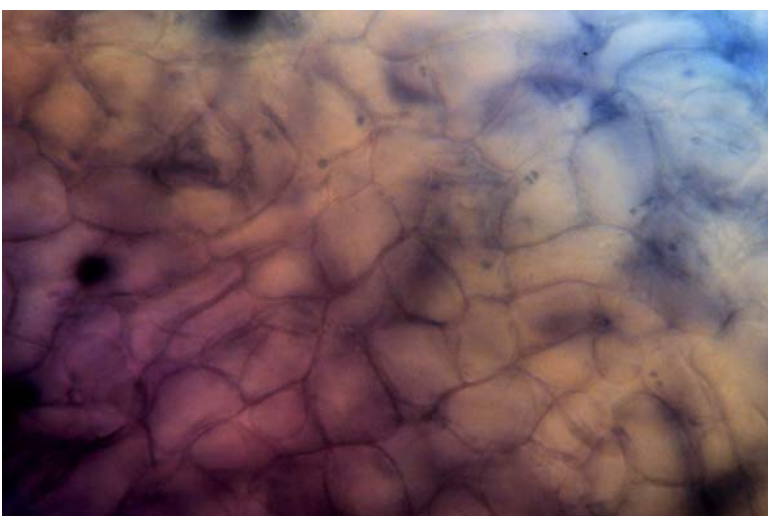
Net synenchyma, with gaps often between cells. Cells 4  $\mu\text{m}$  wide, with no ornamentation nor clamps, and common hyphal junctions.



---

## Inner mantle

Non-interlocking irregular synenchyma, with large cells, 10 x 15  $\mu\text{m}$  in size, and at least 2 layers deep. No ornamentation, no clamps and no contents.



---

## Mycelial strands

Very infrequent, we were unable to determine if the strands were always attached.

## Emanating hyphae

Few emanating hyphae, 4  $\mu\text{m}$  wide, with no ornamentation nor clamps. Often twisted and flaccid, usually darkly stained.

---