

Amanita muscaria

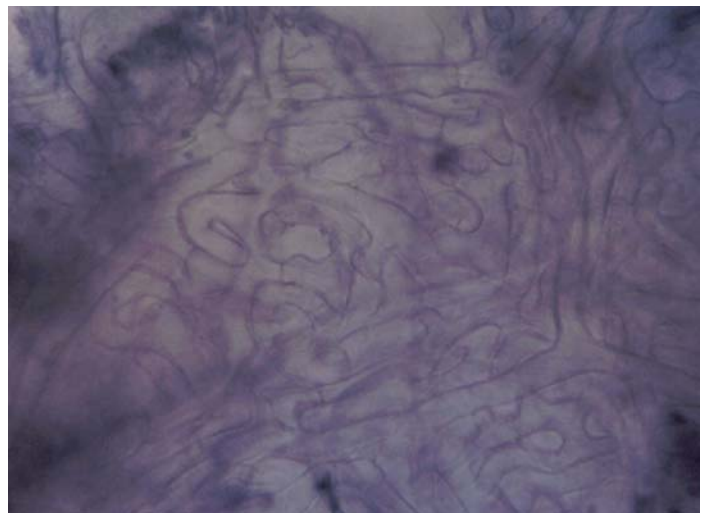
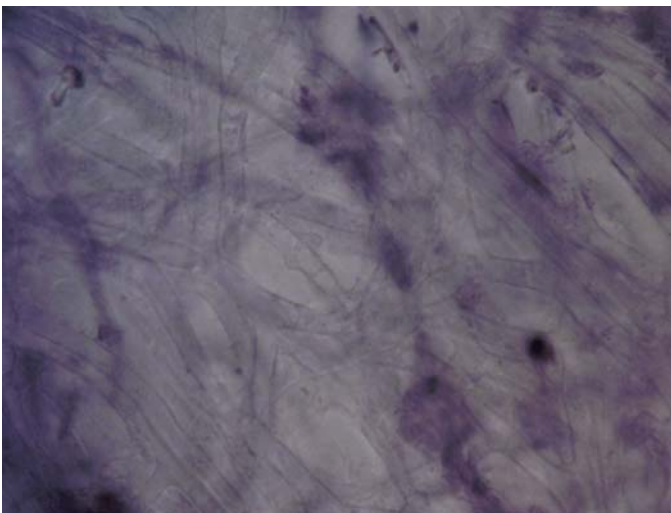
Tips

Monopodial pinnate, with bent tips, white and 'frosty' in colour. Felty texture, with a shiny lustre, and some pale yellow patches where hyphae is less dense. Rare restricted point mycelial strands.



Outer mantle

A net prosenchyma to net synenchyma, with hyphal cells 4 μm wide. Sometimes wrinkled or crustose, with clear contents and no clamps. Few hyphal junctions, the mantle not staining well with toluidine blue.



Inner mantle

Difficult to see, perhaps a net synenchyma to interlocking irregular synenchyma.

Mycelial strands

Smooth-undifferentiated strands, with no ornamentation and no clamps.

Cystidia

Few cystidia, 5 wide, approximately 75 μm long. Sometimes with crustose ornamentation, sometimes smooth. No contents, no clamps, sometimes twisted and flaccid.

