



REVENUE BRANCH, MINISTRY OF FORESTS

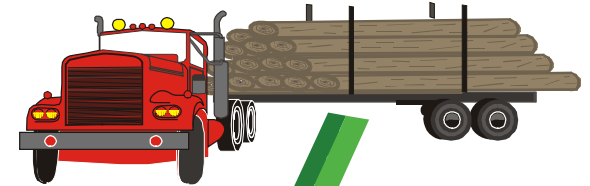
Cruise Timber
(estimating the volume before harvest)



Award Tenure
(Resource Tenures & Engineering Branch)

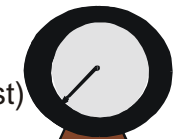


Harvest Timber



Scale Timber

(measuring the volume after harvest)

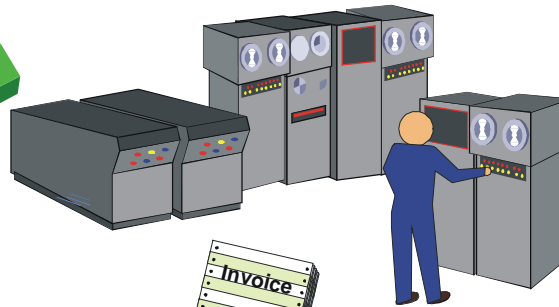


Piece Scale - Coast
(measuring each log)

Weight Scale - Interior
(weight of truck load)



Ministry Billing System
(scale returns - daily scale invoices)



Stumpage Rates

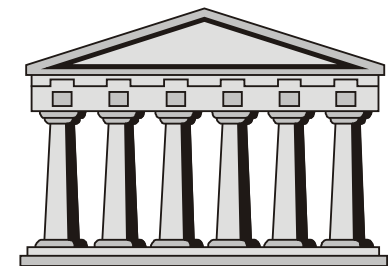
(Stumpage: the price paid for timber harvested from Crown land)
(Stumpage Adjustment Letters every 3 months)



Forest Industry



Payment
(monthly statements of accounts
Ministry of Provincial Revenue)



Treasury