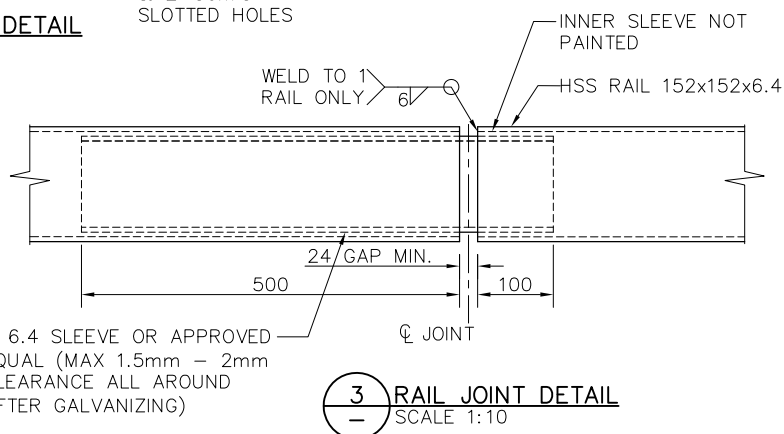
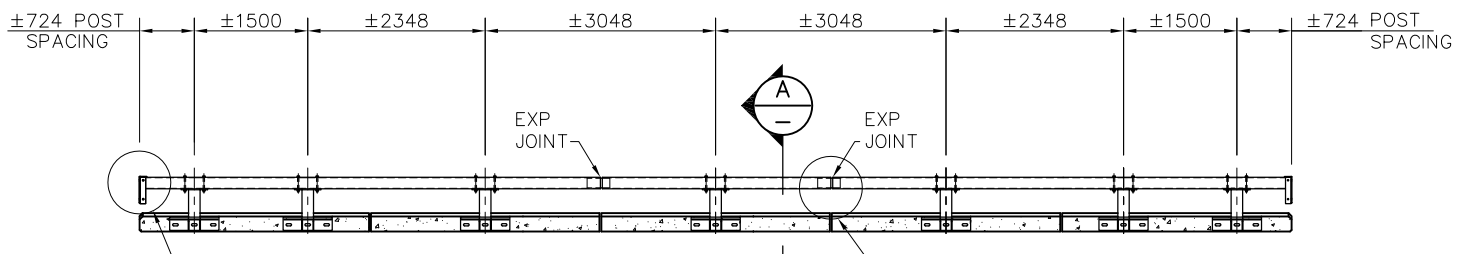


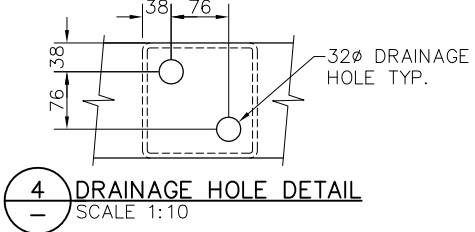
2 POST SUPPORT DETAIL
SCALE 1:10



3 RAIL JOINT DETAIL
SCALE 1:10



TYPICAL RAILING ELEVATION
SCALE 1:100



4 DRAINAGE HOLE DETAIL
SCALE 1:10

ASSUME NOT TO SCALE

ORIGINAL SIGNED AND SEALED

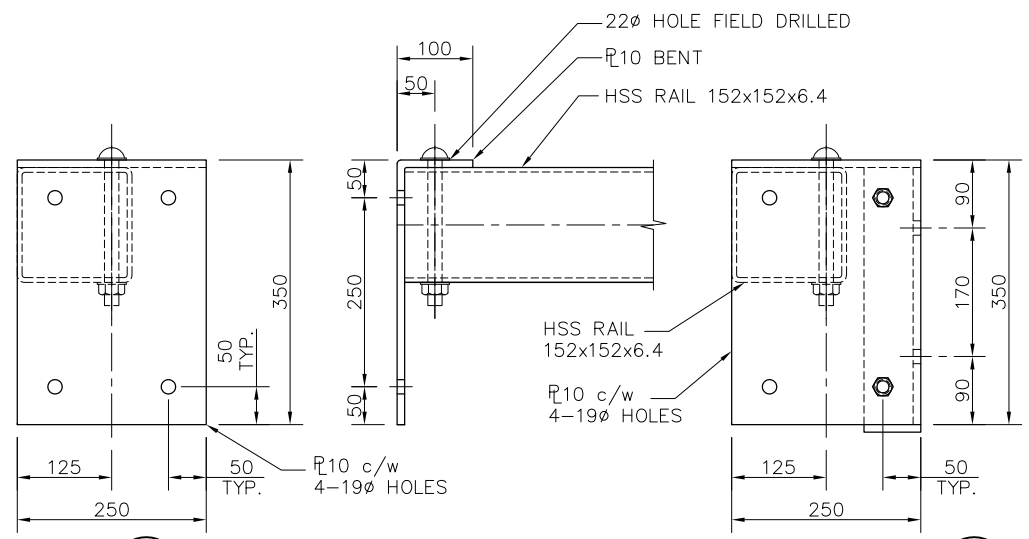
NOTES:

GENERAL

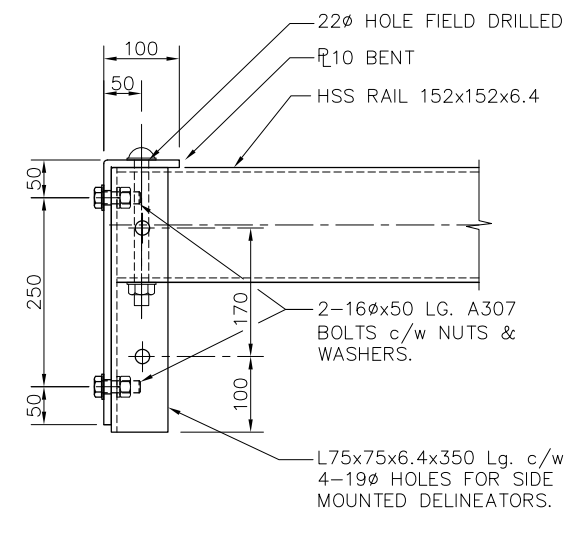
- GUARDRAILS HAVE NOT BEEN DESIGNED FOR FULL VEHICLE WHEEL IMPACT. GUARDRAILS HAVE BEEN DESIGNED TO PROVIDE GUIDANCE TO TRUCKS CROSSING.
- THE HSS GUARDRAIL IS TO BE USED FOR THE REPLACEMENT OF TIMBER GUARDRAILS AND WILL PROVIDE COMPARABLE OR GREATER RESISTANCE TO IMPACT.
- NO RAIL JOINTS WITHIN 1.0m OF SUPPORT POSTS.

STEEL

- PLATE STEEL SHALL BE IN ACCORDANCE WITH i) CSA G40.21 350A FOR BARE STEEL; ii) CSA G40.21 350W FOR GALVANIZED OR PAINTED STEEL. HSS STEEL SHALL BE IN ACCORDANCE WITH CSA G40.21 350W.
- ALL WELDING TO BE IN ACCORDANCE WITH CSA STANDARD W59. WELDING ELECTRODES TO BE COMPATIBLE WITH BASE MATERIAL. ALL WELDS TO BE 6mm UNLESS OTHERWISE NOTED ON DRAWINGS. FABRICATORS RESPONSIBLE FOR WELD CONSTRUCTION MUST BE CERTIFIED FOR DIVISION 1 OR 2.1 OF CSA STANDARD W47.1.
- BOLTS MUST BE IN ACCORDANCE WITH ASTM A-307, HOT DIPPED GALVANIZED, COMPLETE WITH GALVANIZED NUTS AND WASHERS. ALL NUTS TO BE SNUG TIGHT.
- BRACKET SUPPORTS, HSS POSTS, HSS RAILS, AND DELINEATOR TABS TO BE EITHER GALVANIZED WITH 610 gm/m MINIMUM ZINC COATING IN ACCORDANCE WITH CSA G164 OR LEFT BARE OR PAINTED. IF PAINTED, SURFACE PREPARATION SHALL BE BLAST CLEAN TO SSPC SP-6. PAINT TO BE HIGH SOLIDS, SELF-PRIMING EPOXY OR MOISTURE CURE URETHANE. SPECIFIC PAINT PRODUCT TO BE AMERLOCK 400 OR ALTERNATE EQUIVALENT PRODUCT. MINIMUM 2 COATS AND 8 MILS DRY THICKNESS. COLOUR TO BE "SAFETY YELLOW". TOUCH UP WITH GALVACON OR PAINT AFTER RAIL INSTALLATION AS REQUIRED. OWNER SHALL SPECIFY WHETHER COMPONENTS SHALL BE GALVANIZED, PAINTED OR LEFT BARE.



1 FRONT MOUNT DELIN. TAB DETAIL OPT. 1
SCALE 1:10



1 SIDE MOUNT DELIN. TAB DETAIL OPT. 2
SCALE 1:10

Province of British Columbia
MINISTRY OF FORESTS AND RANGE
RESOURCE TENURES and ENGINEERING BRANCH

STANDARD BRIDGE DRAWING

HSS GUIDE RETROFIT
GENERAL ARRANGEMENT SHEET 1 OF 1

ORIGINAL SIGNED and SEALED BY:
W. BRADLEY MAJOR, P.ENG
MFR ENGINEER: LES THIESSEN, P.ENG
DESIGN ENGINEER:
DAVID B. HOLLAND, P.ENG
APPROVED BY: BRIAN CHOW, P.ENG
DATE: DATE
FILE No. DRAWING No.
STD-E-010-06

Rev	Date	DESCRIPTION	Init
2	09/05/27	GENERAL UPDATES	
1	09/03/04	ADDED POST DRAIN HOLES	
0	09/02/19	ISSUED FOR FABRICATION	

REVISIONS