

**A FIELD GUIDE TO
FOREST SITE IDENTIFICATION AND
INTERPRETATION FOR THE
CARIBOO FOREST REGION**

O. A. Steen and R. A. Coupé



Ministry of Forests
Research Program

1997

AUTHORS AND AFFILIATIONS

Ordell Steen, Research Ecologist, Cariboo Forest Region, Ministry of Forests, 200 - 640 Borland Street, Williams Lake, B.C. V2G 4T1

Ray Coupé, Research Ecologist, Cariboo Forest Region, Ministry of Forests, 200 - 640 Borland Street, Williams Lake, B.C. V2G 4T1

Canadian Cataloguing in Publications Data

Steen, O. A.

A field guide to forest site identification and interpretation for the Cariboo Forest Region

Includes bibliographical references: p.
ISBN 0-7726-3495-5

1. Bioclimatology – British Columbia – Cariboo Region. 2. Forest site quality – British Columbia – Cariboo Region. 3. Biogeography – British Columbia – Cariboo Region. 4. Forest ecology – British Columbia – Cariboo Region. 5. Forest management – British Columbia – Cariboo Region. 6. Cariboo Forest Region (B. C.). I. Coupé, R., 1952- . II. British Columbia. Ministry of Forests. Research Branch.

QH541.5.F6S73 1998 581.7'37'09711 C98-960063-7

© 1997 Province of British Columbia

Published by the Research Branch, Ministry of Forests, 712 Yates Street, Victoria, B. C. V8W 3E7

Citation:

Steen, O.A and R.A. Coupé. 1997. A field guide to forest site identification and interpretation for the Cariboo Forest Region. B.C. Min. For., Victoria, B.C. Land Manage. Handb. No. 39.

Copies of this and other Ministry of Forests titles are available from Crown Publications Inc., 521 Fort Street, Victoria, B.C. V8W 1E7

ACKNOWLEDGEMENTS

The classification and interpretations presented in this field guide have evolved over the past 20 years through the collective work of several individuals involved in the many phases of the Cariboo Forest Region ecological classification project.

W.J. Watt coordinated the ecological classification project in the Cariboo Forest Region from 1977 to 1983. During this time and in subsequent years, he provided important guidance on observation and interpretation of site and soil attributes. Several individuals summarized and interpreted data and developed preliminary ecological classifications and draft ecosystem guides: R. Annas, C. Bowling, B. Coupé, R. Dawson, K. Iverson, L. Lemmen, I. Leung, S. Mah, K. Mayes, P. McAuliffe, R. Meister, N. Stromberg, A. vonSaken, M. Waterhouse, and A. Yee. A. Yee contributed very significantly towards the development of initial approaches to ecological classification and description in the Cariboo Forest Region. In addition to these individuals, many others collected field data from the more than 3000 plots that form the basis of the classification in this guide. A. Roberts, F. Boas, and W. Noble identified difficult vascular, bryophyte, and lichen specimens.

This field guide is based on the provincially correlated ecological classification made possible by the Ministry of Forests Ecological Classification Correlation Program. D. Meidinger directed this correlation effort and worked closely with all forest regions in the provincial synthesis of ecological classification data. We have benefited from his enthusiasm, technical insights, and supportive role. T. Fleming, S. Mah, C. Cadrin, A. Inselberg, and K. Yearsley provided data analyses and interpretations for the provincial correlation project. D. Lloyd, C. DeLong, F. Nuszdorfer, A. Banner, and others helped to resolve correlation and mapping issues between the Cariboo and other forest regions.

The format and content of this guide have benefited greatly from guides to ecosystems for other forest regions in British Columbia. Many of the site and soil description aids in the appendices have been adapted from these other regional guides. The text of sections 1–3 has been modified from text prepared by T. Braumandl, R. Green, C. DeLong, A. Banner, and D. Meidinger.

Forest health information in Section 7 was provided by L. Rankin. An initial draft of the silviculture considerations tables was modified and further developed with input from several experienced silviculturists in the Cariboo Forest Region. We thank A. Randall, K. Day, P. Hendrix, C. Gibson-Robertson, M. Seilis, D. Harris, D. Greeley, G. White, A. Lacourcier, T. Harding, C. von Hahn, W. Nuyens, K. Peel, G. McIntosh, M. Rungi, N. Daintith, T. Newsome, and the others who contributed to this section.

D. Meidinger made many valuable review comments and suggestions for all sections of the guide. Other valuable review comments were provided by A. MacKinnon, A. Banner, T. Braumandl, E. Hamilton, J. McClarnon, N. Daintith, T. Newsome, and P. Nystedt.

We thank B. Hammerstron of Image House Inc. in Williams Lake for his creativity and very important role in the technical production aspects of this guide.

P. Nystedt and others of the Production Resources Group of the Ministry of Forests Research Branch provided very important assistance in developing the presentation format of this guide and facilitating many aspects of its final production. S. Smith did the English edit.

Plant illustrations by the following artists have been used in the guide: F.L. Beebe, G. Bishop, T.C. Brayshaw, M. Bryant, P. Drukker-Brammall, P. Frank, G.F. Harcombe, A. Hassen, S. Mitchell, B.C. Newton, S.D. Salkeld, E.J. Stephen, and R.A. With. We thank the Royal British Columbia Museum and the British Columbia Ministry of Environment, Lands and Parks for permission to use plant illustrations from their publications.

To all others who provided advice or logistical support in the many phases of this project we extend our thanks.

**A FIELD GUIDE TO
FOREST SITE IDENTIFICATION AND
INTERPRETATION FOR THE
CARIBOO FOREST REGION**

O. A. Steen and R. A. Coupé

**Internet Version
Appendix 7 to 8**

1997

TABLE OF CONTENTS

AUTHORS AND AFFILIATIONS ii

ACKNOWLEDGEMENTS iii

PART 1

1 INTRODUCTION 1 - 1

Objectives and Scope 1 - 1

Other Sources of Information 1 - 2

Guide Contents and Limitations 1 - 3

Format of the Guide 1 - 4

Training 1 - 4

2 BIOGEOCLIMATIC ECOSYSTEM

CLASSIFICATION SYSTEM 2 - 1

Ecosystems 2 - 1

Synopsis of BEC System 2 - 1

Vegetation Classification 2 - 2

Climatic (Zonal) Classification 2 - 2

Site Classification 2 - 6

Seral Classification 2 - 8

3 PROCEDURES FOR SITE DESCRIPTION

AND IDENTIFICATION 3 - 1

Identifying Biogeoclimatic Units 3 - 2

Describing and Identifying Site Units 3 - 3

4 ENVIRONMENT OF THE CARIBOO FOREST

REGION 4 - 1

Physiography 4 - 1

Climate 4 - 4

Vegetation and Soils 4 - 6

5 BIOGEOCLIMATIC UNITS OF THE CARIBOO

FOREST REGION 5•1 - 1

Introduction 5•1 - 1

AT - Alpine Tundra Zone	5•2 - 1
BG - Bunchgrass Zone	5•3 - 1
CWH - Coastal Western Hemlock Zone	5•4 - 1
ESSF - Engelmann Spruce–Subalpine Fir Zone	5•5 - 1
ICH - Interior Cedar–Hemlock Zone	5•6 - 1
IDF - Interior Douglas–fir Zone	5•7 - 1
MS - Montane Spruce Zone	5•8 - 1
MH - Mountain Hemlock Zone	5•9 - 1
SBPS - Sub-Boreal Pine–Spruce Zone	5•10 - 1
SBS - Sub-Boreal Spruce Zone	5•11 - 1

6 SITE UNITS OF THE CARIBOO FOREST REGION .. 6•1 - 1

Guide to Site Unit Descriptions	6•1 - 1
AT - Alpine Tundra Zone	6•2 - 1
BGxh3 - BG Very Dry Hot Subzone, Fraser Variant	6•3 - 1
BGxw2 - BG Very Dry Warm Subzone, Alkali Variant	6•4 - 1
CWH - Coastal Western Hemlock Zone	6•5 - 1
ESSFdc2 - ESSF Dry Cold Subzone, Thompson Variant	6•6 - 1
ESSFmv1 - ESSF Moist Very Cold Subzone, Nechako Variant	6•7 - 1
ESSFwc3 - ESSF Wet Cold Subzone, Cariboo Variant	6•8 - 1
ESSFwk1 - ESSF Wet Cool Subzone, Cariboo Variant	6•9 - 1
ESSFxc - ESSF Very Dry Cold Subzone	6•10 - 1
ESSFvx1 - ESSF Very Dry Very Cold Subzone, West Chilcotin Variant	6•11 - 1
ESSFvx2 - ESSF Very Dry Very Cold Subzone, Big Creek Variant	6•12 - 1
ICHdk - ICH Dry Cool Subzone	6•13 - 1
ICHmk3 - ICH Moist Cool Subzone, Horsefly Variant	6•14 - 1
ICHmw3 - ICH Moist Warm Subzone, Thompson Variant	6•15 - 1
ICHwk2 - ICH Wet Cool Subzone, Quesnel Variant	6•16 - 1
ICHwk4 - ICH Wet Cool Subzone, Cariboo Variant	6•17 - 1
IDFdk1 - IDF Dry Cool Subzone, Thompson Variant	6•18 - 1
IDFdk3 - IDF Dry Cool Subzone, Fraser Variant	6•19 - 1
IDFdk4 - IDF Dry Cool Subzone, Chilcotin Variant	6•20 - 1
IDFdw - IDF Dry Warm Subzone	6•21 - 1
IDFmw2 - IDF Moist Warm Subzone, Thompson Variant	6•22 - 1
IDFxm - IDF Very Dry Mild Subzone	6•23 - 1
IDFwx - IDF Very Dry Warm Subzone.	6•24 - 1

MHmm2 - MH Moist Maritime Subzone,	
Leeward Variant	6•25 - 1
MSdc2 - MS Dry Cold Subzone, Tatlayoko Variant	6•26 - 1
MSdv - MS Dry Very Cold Subzone	6•27 - 1
MSxk - MS Very Dry Cool Subzone	6•28 - 1
MSxv - MS Very Dry Very Cold Subzone	6•29 - 1
SBPSdc - SBPS Dry Cold Subzone	6•30 - 1
SBPSmc - SBPS Moist Cold Subzone	6•31 - 1
SBPSmk - SBPS Moist Cool Subzone	6•32 - 1
SBPSxc - SBPS Very Dry Cold Subzone	6•33 - 1

PART 2

SBSdw1 - SBS Dry Warm Subzone, Horsefly Variant	6•34 - 1
SBSdw2 - SBS Dry Warm Subzone, Blackwater Variant ...	6•35 - 1
SBSmc1 - SBS Moist Cold Subzone, Moffat Variant	6•36 - 1
SBSmc2 - SBS Moist Cold Subzone, Babine Variant	6•37 - 1
SBSmh - SBS Moist Hot Subzone	6•38 - 1
SBSmm - SBS Moist Mild Subzone	6•39 - 1
SBSmw - SBS Moist Warm Subzone	6•40 - 1
SBSwk1 - SBS Wet Cool Subzone, Willow Variant	6•41 - 1
7 SILVICULTURE CONSIDERATIONS¹	7•1 - 1
Background.	7•1 - 1
ESSFwc3 - ESSF Wet Cold Subzone, Cariboo Variant	7•8 - 1
ESSFwk1 - ESSF Wet Cool Subzone, Cariboo Variant	7•9 - 1
ESSFvx1 - ESSF Very Dry Very Cold Subzone,	
West Chilcotin Variant	7•11 - 1
ICHdk - ICH Dry Cool Subzone	7•13 - 1
ICHmk3 - ICH Moist Cool Subzone, Horsefly Variant	7•14 - 1
ICHwk2 - ICH Wet Cool Subzone, Quesnel Variant	7•16 - 1
ICHwk4 - ICH Wet Cool Subzone, Cariboo Variant	7•17 - 1
IDFdk3 - IDF Dry Cool Subzone, Fraser Variant	7•19 - 1
IDFdk4 - IDF Dry Cool Subzone, Chilcotin Variant	7•20 - 1
IDFxm - IDF Very Dry Mild Subzone	7•23 - 1
IDFwx - IDF Very Dry Warm Subzone	7•24 - 1
MSxv - MS Very Dry Very Cold Subzone	7•29 - 1

¹ Subsection numbers are the same as for the equivalent biogeoclimatic unit in Section 6. Missing subsections indicate biogeoclimatic units for which silviculture considerations have not yet been prepared.

SBPSdc - SBPS Dry Cold Subzone	7•30 - 1
SBPSmk - SBPS Moist Cool Subzone	7•32 - 1
SBPSxc - SBPS Very Dry Cold Subzone	7•33 - 1
SBSdw1 - SBS Dry Warm Subzone, Horsefly Variant	7•34 - 1
SBSdw2 - SBS Dry Warm Subzone, Blackwater Variant ...	7•35 - 1
SBSmc1 - SBS Moist Cold Subzone, Moffat Variant	7•36 - 1
SBSmc2 - SBS Moist Cold Subzone, Babine Variant	7•37 - 1
SBSmh - SBS Moist Hot Subzone	7•38 - 1
SBSmw - SBS Moist Warm Subzone	7•40 - 1
SBSwk1 - SBS Wet Cool Subzone, Willow Variant	7•41 - 1
8 LITERATURE CITED	8 - 1

APPENDICES

1 Equivalence of current provincially correlated BEC codes and the pre-correlation classification codes for ecosystems in the Cariboo Forest Region	A•1 - 1
2 Tree species codes and symbols	A•2 - 1
3 Ecoregion classification of the Cariboo Forest Region	A•3 - 1
4 Relative soil moisture regime identification key	A•4 - 1
5 Actual soil moisture regime relationship to relative soil moisture regime and biogeoclimatic unit	A•5 - 1
6 Soil nutrient regime identification	A•6 - 1
7 Guide to identification of surficial geological materials	A•7 - 1
8 Guide to the common rock types of the Cariboo Forest Region	A•8 - 1
9 Guide to field soil texturing	A•9 - 1
10 Soil particle size classification	A•10 - 1
11 Guide to the identification of soil orders and great groups	A•11 - 1
12 Characteristics of humus form orders	A•12 - 1
13 Common and scientific names of plant species mentioned in this guide	A•13 - 1
14 Comparison charts for visual estimation of foliage cover	A•14 - 1
15 Description of vegetation subcomplexes listed in silviculture considerations tables	A•15 - 1

TABLES

1	Subzone name codes	2 - 5
2	Important site and soil features for identifying site units	3 - 4
3	Environmental characteristics of BG subzones in the Cariboo Forest Region	5•3 - 2
4	Environmental characteristics of ESSF subzones and variants in the Cariboo Forest Region	5•5 - 2
5	ESSF vegetation table - zonal sites	5•5 - 6
6	Environmental characteristics of ICH subzones and variants in the Cariboo Forest Region	5•6 - 2
7	ICH vegetation table - zonal sites	5•6 - 6
8	Environmental characteristics of IDF subzones and variants in the Cariboo Forest Region	5•7 - 2
9	IDF vegetation table - zonal sites	5•7 - 5
10	Environmental characteristics of MS subzones and variants in the Cariboo Forest Region	5•8 - 2
11	MS vegetation table - zonal sites	5•8 - 5
12	Environmental characteristics of SBPS subzones in the Cariboo Forest Region	5•10 - 3
13	SBPS vegetation table - zonal sites	5•10 - 6
14	Environmental characteristics of SBS subzones and variants in the Cariboo Forest Region	5•11 - 2
15	SBS vegetation table - zonal sites	5•11 - 6
16	Vegetation potential classes	7•1 - 13

FIGURES

1	Location of the Cariboo Forest Region	1 - 1
2	Mesoslope position diagram	3 - 5
3	Physiographic subdivisions of the Cariboo Forest Region	4 - 2
4	Example silviculture considerations table	7•1 - 8

APPENDIX 7

GUIDE TO IDENTIFICATION OF SURFICIAL GEOLOGICAL MATERIALS^a

Surficial material class	Mode of deposition	Coarse fragment shape	Material sorting and layering	Texture	Landscape position
Colluvial	Materials that have reached their present position directly as a result of gravity-induced movement	angular / variable	generally non-sorted	variable (clay to boulders); loose; coarse fragments usually touch one another	usually on or at base of steep slopes
Morainal	Materials deposited directly by glacier ice without modification by any other agent of transportation	variable angularity; usually including some subangular	heterogeneous mix of particle sizes	variable (clay to boulders possible); often can feel some clay in subsoil; loose or compacted	variable
Fluvial	Materials deposited by streams and rivers since deglaciation	dominantly rounded	generally sorted and layered	gravels, sands and/or silts	generally level deposits at or slightly above stream levels
Glaciofluvial	Materials deposited by glacial meltwaters, either in front of or in contact with glacier ice	dominantly rounded	generally sorted and layered, layering may be irregular	mostly gravels and sand, frequently with large boulders occasionally includes silty and clayey materials	terraces, fans, outwash plains, eskers, kames

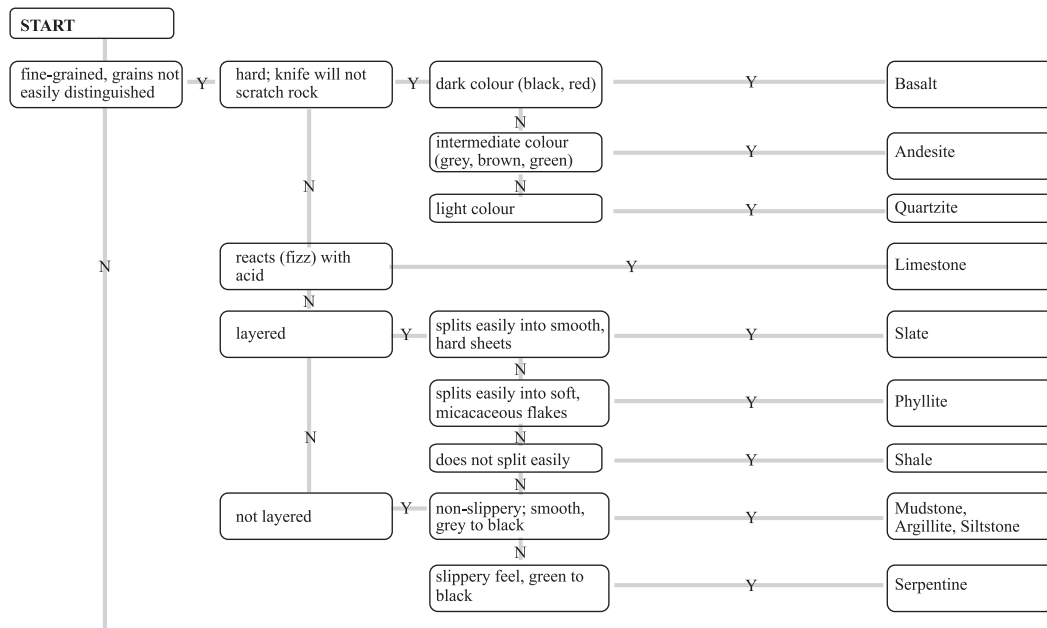
GUIDE TO IDENTIFICATION OF SURFICIAL GEOLOGICAL MATERIALS^a (CONTINUED)

Surficial material class	Mode of deposition	Coarse fragment shape	Material sorting and layering	Texture	Landscape position
Lacustrine and Glacio-lacustrine	Materials that have settled out of suspension in bodies of standing water	n/a	sorted and layered; often more compacted at depth	silt, clay, and occasionally fine sand; may include occasional ice-rafted gravels and stones	lakebed deposits, often terraced
Eolian	Materials transported and deposited by wind	n/a	loose, well sorted	medium and fine sand, coarse silt; may contain some buried coarse fragments	dunes, moderately thick to thin capping overlying other landforms
Weathered bedrock	Bedrock decomposed <i>in situ</i> by mechanical and/or chemical weathering	variable; most commonly angular	loose, non-sorted	variable; may include sand, silt, and/or clay depending on the bedrock type	often ridge crests and upper slopes
Organic	Organic material accumulations > 40cm thick derived largely from decomposing vegetative matter on water-saturated sites	n/a	n/a	fibric, mesic, and humic "organic textures"	bogs, fens, swamps

^a adapted from Howes, D.E. and E. Kenk. 1988. Terrain classification system for British Columbia. Revised. B.C. Min. Environ. and Min. Crown Lands, Victoria, B.C. Min. Environ. Manual 10.

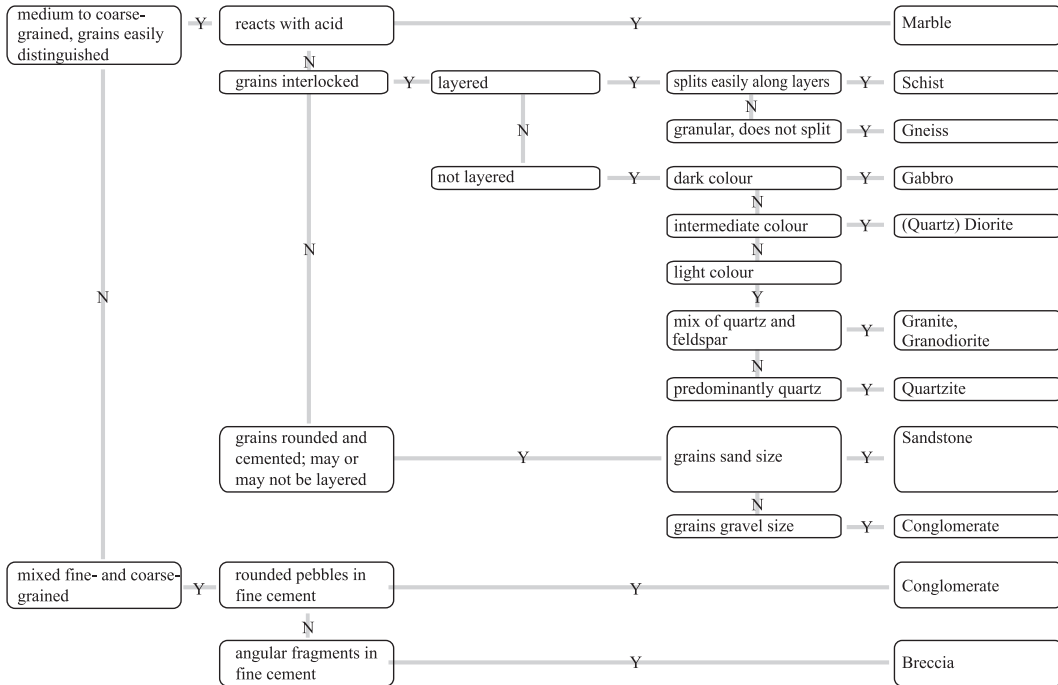
APPENDIX 8

GUIDE TO THE COMMON ROCK TYPES OF THE CARIBOO FOREST REGION



GUIDE TO THE COMMON ROCK TYPES OF THE CARIBOO FOREST REGION (Continued)

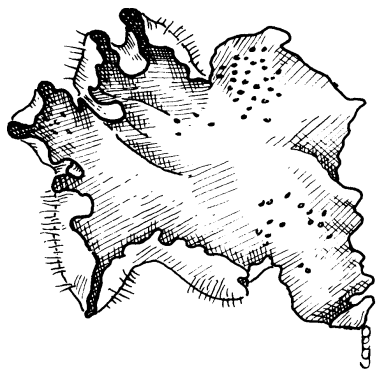
A•8 - 2



Adapted from Lloyd *et al.* (1990)

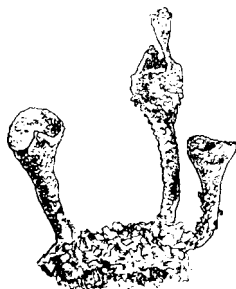
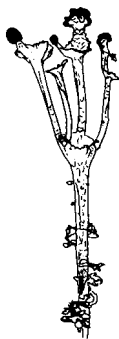
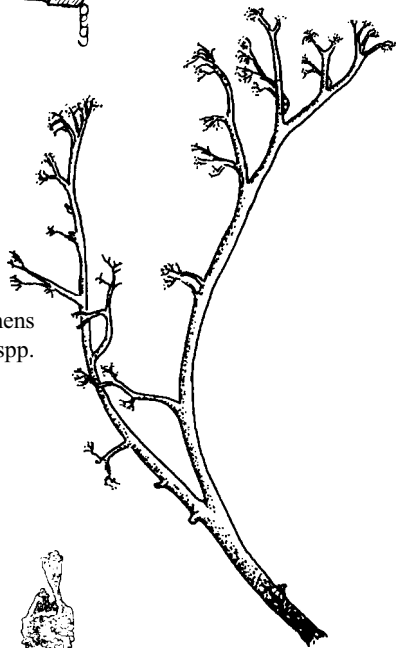
Reference

Lloyd, D., K. Angove, G. Hope, and C. Thompson. 1990. A guide to site identification and interpretation for the Kamloops Forest Region. B.C. Min. For., Victoria, B.C. Land Manage. Handb. No. 23.



Freckle pelt lichen
Peltigera aphthosa

Cladina lichens
Cladina spp.



Cladonia lichens
Cladonia spp.