

634,928
59
S582B
App.

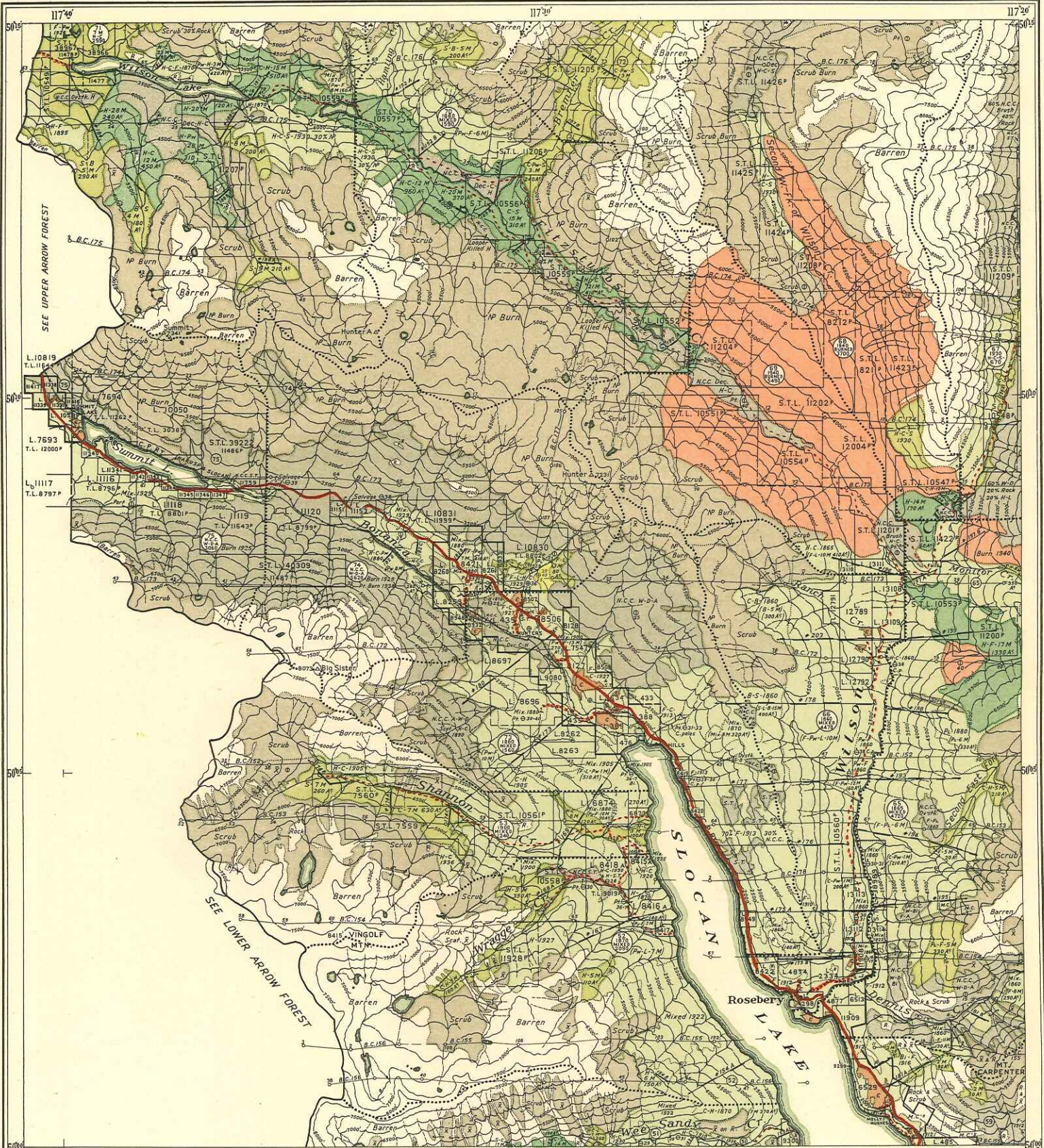
R 81

JUAN DE FUCA REGION

1942

O. SIEBORN

ECONOMIC DIVISION
FOREST SERVICE



LEGEND

- DESCRIPTIVE CIRCLES**
 Main compartment, reading from top to bottom:
 (1) Compartment number
 (2) Average volume per acre if mature, site of establishment if immature, deciduous mature and immature
 (3) Forest type
 (4) Acres of type
 Division of volume per acre indicates confidential cruise.
 Secondary circles, e.g. (5) indicate that area is part of main compartment.
 History circles:
 (6) Logged 1928.
 (7) Logged 1929; burned 1930.
 (8) Selectively logged 1928.
 (9) Burned 1930.
SUB-TYPE DESCRIPTIONS
 E.S. H.C. 1880 Immature Hemlock-Cedar, established in 1930.
 H.C. 336 500 ac. Merchantable Fir-Cedar, averaging 35,000 ft³ per acre, not area 500 acres.
- COLOR CHART**
 Mature timber (coniferous)
 Under 10 M.B.M. per acre
 Immature timber (coniferous)
 Deciduous mature and immature
 Non-commercial cover
 Logged, not reforested
 Burned
 Natural grass or pasture lands
 Non-productive forests (scrub)
 Swamp and water
 Cultivated, cleared or barren
 Alpine, rock or barren (uncoloured).
- MISCELLANEOUS**
 Forest type boundaries
 Boundary
 Height of land
 Main road
 Secondary road
 Logging road
 Trail (indefinite)
 Railroad grade
 Flume or ditch
 Logging chute
 Wharf
 Buildings
 Post-office
 School
 Sawmill (stationary)
 Portable
 Cabin
 Mine
 Forestry lookout
 Telephone-line
 Power-line
 Triangulation station
 Corner post (found)
 Examination strip
 Aeroplane flight

- ABBREVIATIONS**
- | | | |
|---------------------|-----------------------------------|--------------------------|
| F—Douglas Fir | D—Alder | G.R.—Open Range |
| W—Western Red Cedar | B—Birch | M—Meadow |
| H—Hemlock | MA—Bristleleaf Maple | CA—Carronwood |
| S—Spruce | CA—Carronwood | Sc—Scrub |
| PA—Pine (Balsam) | A—Aspen | Al—Alpine |
| PF—Pine (Fir) | W—Willow | R—Rock |
| PP—Pine (Pitch) | N.C.—Non-commercial Cover | St—Strata |
| PV—Pine (Venezian) | W—Wetlands | S.O.R.—Semi-open Range |
| LP—Lodgepole Pine | Sw—Swamp | Sc—Cultivated or Cleared |
| CL—Cedar | W—Windfall | Cl—Mineral Claim |
| W—Willow | N.C.—Not satisfactorily restocked | Ac.—Acres |

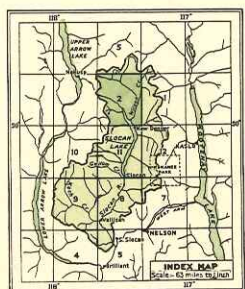
BRITISH COLUMBIA FOREST SERVICE
 C. B. ORCHARD, Chief Forester
 ECONOMICS DIVISION F. S. MURPHY, Forester

FOREST COVER SERIES

MAP 50°-117° No. 2
 Scale - 2 miles to inch.

SLOCAN FOREST
 1940

SOURCES OF INFORMATION
 MAPS FROM PROVINCIAL LAND SURVEY AND STAGGARD MAPS. GEOGRAPHICAL POSITIONS ACCORDING TO NORTH AMERICAN DATUM, 1983. FOREST COVER AND FOREDOM FROM FOREST SURVEY EXAMINER STOPS, 1938, 41, 42, 43, 44, 45, 46, 47, 48, 49, 50, 51, 52, 53, 54, 55, 56, 57, 58, 59, 60, 61, 62, 63, 64, 65, 66, 67, 68, 69, 70, 71, 72, 73, 74, 75, 76, 77, 78, 79, 80, 81, 82, 83, 84, 85, 86, 87, 88, 89, 90, 91, 92, 93, 94, 95, 96, 97, 98, 99, 100.



NOTE: - Plan continued from S.E. corner of each sheet of latitude and longitude. Centre of mass other than east on application to the Chief Forester, Victoria, B.C.

Revised	Field Map by J.S.E. 1940
Revised	Final Map by J.S.E. 1941
Revised	Checked by G.R.N. 1941
Revised	Coloured by