

BRITISH COLUMBIA CANNED SALMON PACK BULLETIN - 2007

		Current Domestic Production <i>(48 lb. cases)</i>	Production from Imported Salmon <i>(48 lb. cases)</i>	Current Season Total <i>(48 lb. cases)</i>	Increase Over Previous Week <i>(48 lb. cases)</i>	Comparison with Previous Years			
						July 29/06 <i>(48 lb. cases)</i>	July 23/05 <i>(48 lb. cases)</i>	July 25/04 <i>(48 lb. cases)</i>	July 26/03 <i>(48 lb. cases)</i>
SOCKEYE	Total	48,972 ¹	*	48,972	48,972	170,806	104,503	171,146	162,340
	<i>final to date</i>					45,471 ²	50,091	92,659 ²	97,074
CHINOOK	Total	*	-	*	*	-	-	-	*
	<i>final to date</i>					-	-	-	-
COHO	Total	*	-	*	*	93	4,562	2,945	751
	<i>final to date</i>					*	*	*	-
PINK	Total	38,426 ³	*	38,426 ³	38,426 ³	39,181	375,278	208,555	381,583
	<i>final to date</i>					9,950	82,120 ⁴	25,014	108,972 ⁵
CHUM	Total	-	-	-	-	1,205	5,016	8,743	8,033 ⁶
	<i>final to date</i>					*	-	*	*
TOTAL	Total	87,398 ¹	-	87,398	87,398	211,285	489,359	391,389	552,707
	<i>final to date</i>					55,421	132,211	117,673	206,046

1. Includes a significant amount of imported sockeye.

2. Includes a small amount of imported and domestic chum and coho.

3. Includes a small amount of domestic chinook and coho and imported pink.

4. Includes a small amount of imported and domestic coho.

5. Includes a small amount of domestic chum.

6. Includes a small amount of domestic chinook.

* Confidential; less than three companies reporting.

Oceans & Marine Fisheries Division

PO BOX 9309 STN PROV GOV'T

VICTORIA, BC V8W 9N1

250 953-3426

BRITISH COLUMBIA CANNED SALMON PACK BULLETIN - 2007

		Current Domestic Production (48 lb. cases)	Production from Imported Salmon (48 lb. cases)	Current Season Total (48 lb. cases)	Increase Over Previous Week (48 lb. cases)	Comparison with Previous Years			
						August 5/06 (48 lb. cases)	July 30/05 (48 lb. cases)	July 31/04 (48 lb. cases)	Aug 2/03 (48 lb. cases)
SOCKEYE	Total	62,801 ¹	*	62,801	13,829	170,806	104,503	171,146	162,340
	<i>final to date</i>					57,495	66,464 ²	134,666 ³	112,501
CHINOOK	Total	*	-	*	*	-	-	-	*
	<i>final to date</i>					-	-	-	-
COHO	Total	*	*	*	*	93	4,562	2,945	751
	<i>final to date</i>					69	*	*	*
PINK	Total	82,301 ⁴	21,136 ⁵	103,437 ^{4,5}	65,011 ^{4,5}	39,181	375,278	208,555	381,583
	<i>final to date</i>					20,868	178,355 ⁶	50,537	204,745 ⁷
CHUM	Total	-	-	-	-	1,205	5,016	8,743	8,033 ⁸
	<i>final to date</i>					1,117	*	*	*
TOTAL	Total	145,102 ¹	21,136	166,238	78,840	211,285	489,359	391,389	552,707
	<i>final to date</i>					79,549	244,819	185,203	317,246

1. Includes a significant amount of imported sockeye.
 2. Includes a significant amount of coho.
 3. Includes a small amount of chum and coho.
 4. Includes a small amount of domestic chinook and coho.
 5. Includes a small amount of imported coho.
 6. Includes a small amount of chum.
 7. Includes a small amount of chum and coho.
 8. Includes a small amount of domestic chinook.
- * Confidential; less than three companies reporting.

Oceans & Marine Fisheries Division
PO BOX 9309 STN PROV GOVT
VICTORIA, BC V8W 9N1
250 953-3426

BRITISH COLUMBIA CANNED SALMON PACK BULLETIN - 2007

		Current Domestic Production (48 lb. cases)	Production from Imported Salmon (48 lb. cases)	Current Season Total (48 lb. cases)	Increase Over Previous Week (48 lb. cases)	Comparison with Previous Years			
						August 12/06 (48 lb. cases)	Aug 6/05 (48 lb. cases)	Aug 7/04 (48 lb. cases)	Aug 9/03 (48 lb. cases)
SOCKEYE	Total	21,143	46,535	67,678	4,877	170,806	104,503	171,146	162,340
	<i>final to date</i>					70,442	79,037 ¹	153,262 ²	145,349
CHINOOK	Total	*	-	*	*	-	-	-	*
	<i>final to date</i>					-	-	-	-
COHO	Total	*	*	*	*	93	4,562	2,945	751
	<i>final to date</i>					69	*	*	*
PINK	Total	127,708 ³	44,202 ⁴	171,910 ^{3,4}	68,473 ^{3,4}	39,181	375,278	208,555	381,583
	<i>final to date</i>					25,699	262,966 ⁵	80,419	264,385 ⁶
CHUM	Total	-	-	-	-	1,205	5,016	8,743	8,033 ⁷
	<i>final to date</i>					1,117	*	*	*
TOTAL	Total	148,851	90,737	239,588	73,350	211,285	489,359	391,389	552,707
	<i>final to date</i>					97,327	342,003	233,681	409,734

1. Includes a significant amount of coho.
 2. Includes a small amount of chum and coho.
 3. Includes a small amount of domestic chinook and coho.
 4. Includes a small amount of imported coho.
 5. Includes a small amount of chum.
 6. Includes a small amount of chum and coho.
 7. Includes a small amount of domestic chinook.
- * Confidential; less than three companies reporting.

Oceans & Marine Fisheries Division
PO BOX 9309 STN PROV GOVT
VICTORIA, BC V8W 9N1
250 953-3426

BRITISH COLUMBIA CANNED SALMON PACK BULLETIN - 2007

		Current Domestic Production (48 lb. cases)	Production from Imported Salmon (48 lb. cases)	Current Season Total (48 lb. cases)	Increase Over Previous Week (48 lb. cases)	Comparison with Previous Years			
						Aug 19/06 (48 lb. cases)	Aug 13/05 (48 lb. cases)	Aug 14/04 (48 lb. cases)	Aug 16/03 (48 lb. cases)
SOCKEYE	Total	22,377	48,077	70,454	2,776	170,806	104,503	171,146	162,340
	<i>final to date</i>					102,277	97,018	167,548 ¹	154,064
CHINOOK	Total	*	-	*	*	-	-	-	*
	<i>final to date</i>					-	-	-	-
COHO	Total	*	*	*	*	93	4,562	2,945	751
	<i>final to date</i>					87	3,587	*	*
PINK	Total	156,485 ²	79,024 ³	235,509 ^{2,3}	63,599 ^{2,3}	39,181	375,278	208,555	381,583
	<i>final to date</i>					30,937	345,714	118,789	327,068 ¹
CHUM	Total	-	-	-	-	1,205	5,016	8,743	8,033 ⁴
	<i>final to date</i>					1,174	2,317	*	*
TOTAL	Total	178,862	127,101	305,963	66,375	211,285	489,359	391,389	552,707
	<i>final to date</i>					134,475	448,636	286,337	481,132

1. Includes a small amount of chum and coho.
2. Includes a small amount domestic chinook and coho.
3. Includes a small amount of imported coho.
4. Includes a small amount of chinook.

Oceans & Marine Fisheries Division
PO BOX 9309 STN PROV GOVT
VICTORIA, BC V8W 9N1
250 953-3426

* Confidential; less than three companies reporting.

BRITISH COLUMBIA CANNED SALMON PACK BULLETIN - 2007

		Current Domestic Production (48 lb. cases)	Production from Imported Salmon (48 lb. cases)	Current Season Total (48 lb. cases)	Increase Over Previous Week (48 lb. cases)	Comparison with Previous Years			
						Aug 25/06 (48 lb. cases)	Aug 20/05 (48 lb. cases)	Aug 21/04 (48 lb. cases)	Aug 28/03 (48 lb. cases)
SOCKEYE	Total	23,329	48,047	71,376	922	170,806	104,503	171,146	162,340
	<i>final to date</i>					145,658	97,425	169,124	158,471
CHINOOK	Total	*	-	*	*	-	-	-	*
	<i>final to date</i>					-	-	-	-
COHO	Total	*	*	*	*	93	4,562	2,945	751
	<i>final to date</i>					90	4,346	2,055	*
PINK	Total	172,643 ¹	96,301 ²	268,944 ^{1,2}	31,296 ^{1,2}	39,181	375,278	208,555	381,583
	<i>final to date</i>					36,973	351,744	156,478	374,648 ³
CHUM	Total	-	-	-	-	1,205	5,016	8,743	8,033 ⁴
	<i>final to date</i>					1,204	2,630	659	*
TOTAL	Total	195,972	144,348	340,320	32,218	211,285	489,359	391,389	552,707
	<i>final to date</i>					183,925	456,145	328,316	533,119

1. Includes a small amount domestic chinook and coho.

2. Includes a small amount of imported coho.

3. Includes a small amount of chinook.

4. Includes a small amount of chum and coho.

Oceans & Marine Fisheries Division
PO BOX 9309 STN PROV GOVT
VICTORIA, BC V8W 9N1
250 953-3426

* Confidential; less than three companies reporting.

BRITISH COLUMBIA CANNED SALMON PACK BULLETIN - 2007

		Current Domestic Production (48 lb. cases)	Production from Imported Salmon (48 lb. cases)	Current Season Total (48 lb. cases)	Increase Over Previous Week (48 lb. cases)	Comparison with Previous Years			
						Sept 2/06 (48 lb. cases)	Aug 27/05 (48 lb. cases)	Aug 28/04 (48 lb. cases)	Aug 28/03 ¹ (48 lb. cases)
SOCKEYE	Total	23,371	48,971	72,342	966	170,806	104,503	171,146	162,340
	<i>final to date</i>					157,698	99,698	170,900	158,471
CHINOOK	Total	77	-	77	77	-	-	-	*
	<i>final to date</i>					-	-	-	-
COHO	Total	1,805	348	2,153	2,153	93	4,562	2,945	751
	<i>final to date</i>					94	4,388	2,542	*
PINK	Total	179,327	102,254	281,581	12,637	39,181	375,278	208,555	381,583
	<i>final to date</i>					39,166	364,159	202,283	374,648 ²
CHUM	Total	-	-	-	-	1,205	5,016	8,743	8,033 ³
	<i>final to date</i>					1,205	2,633	659	*
TOTAL	Total	204,580	151,573	356,153	15,833	211,285	489,359	391,389	552,707
	<i>final to date</i>					198,163	470,878	376,384	533,119

1. No changes since last published bulletin.

2. Includes a small amount of chum and coho.

3. Includes a small amount of chinook.

* Confidential; less than three companies reporting.

AGR10018-3 Rev. 08/07

Oceans & Marine Fisheries Division
PO BOX 9309 STN PROV GOV'T
VICTORIA, BC V8W 9N1
250 953-3426

BRITISH COLUMBIA CANNED SALMON PACK BULLETIN - 2007

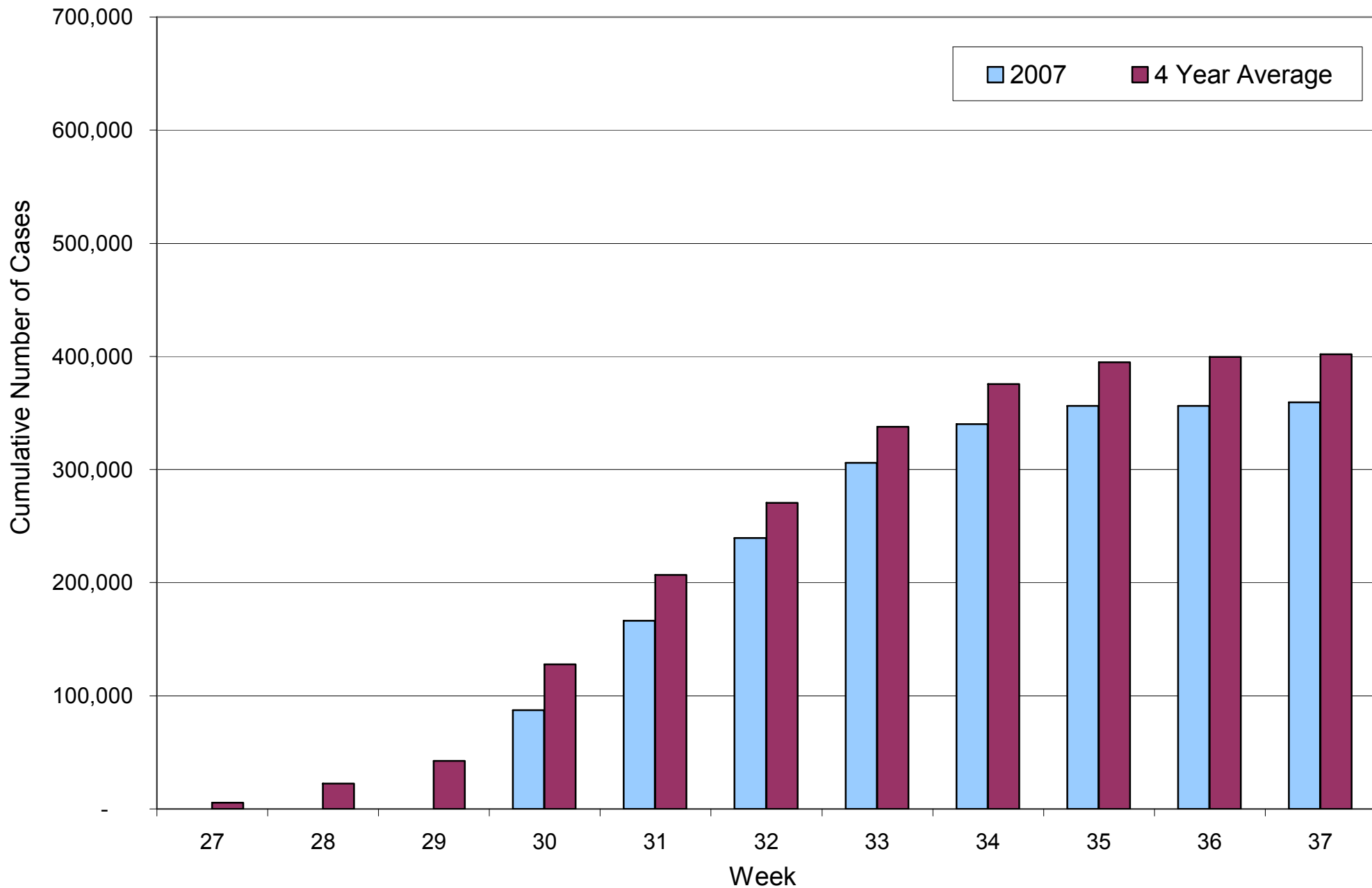
		Current Domestic Production (48 lb. cases)	Production from Imported Salmon (48 lb. cases)	Current Season Total (48 lb. cases)	Increase Over Previous Week (48 lb. cases)	Comparison with Previous Years			
						Sept 9/06 (48 lb. cases)	Sept 3/05 (48 lb. cases)	Aug 28/04 ¹ (48 lb. cases)	Aug 28/03 ¹ (48 lb. cases)
SOCKEYE	Total <i>final to date</i>	23,435	49,207	72,642	300	170,806	104,503	171,146	162,340
						168,647	100,105	170,900	158,471
CHINOOK	Total <i>final to date</i>	93	-	93	16	-	-	-	*
						-	-	-	-
COHO	Total <i>final to date</i>	1,805	396	2,201	48	93	4,562	2,945	751
						94	4,562	2,542	*
PINK	Total <i>final to date</i>	179,373	104,993	284,366	2,785	39,181	375,278	208,555	381,583
						39,176	372,020	202,283	374,648 ²
CHUM	Total <i>final to date</i>	-	-	-	-	1,205	5,016	8,743	8,033 ³
						1,205	3,028	659	*
TOTAL	Total <i>final to date</i>	204,706	154,596	359,302	3,149	211,285	489,359	391,389	552,707
						209,122	479,715	376,384	533,119

1. No changes since last published bulletin.
2. Includes a small amount of chum and coho.
3. Includes a small amount of chinook.

* Confidential; less than three companies reporting.

Oceans & Marine Fisheries Division
PO BOX 9309 STN PROV GOV'T
VICTORIA, BC V8W 9N1
250 953-3426

Total BC Canned Salmon Pack 2007 v Four-Year-Average (2003-2006)



**BC Canned Salmon Pack - Imported v Domestic Origin
2002 - 2007**

