

Silviculture
Peter Robson

SX 8004 Q

SX 8004 Q

Western Hemlock Paperpot Trial

Officer or
Technician i/c:

F. Pendl

Location:

Saunders Creek, Gold River

Region/District
or Nursery:

V/Campbell River

Objective:

To compare survival and growth of Western hemlock grown by Reid Collins as paperpots (CPP 408) with that of PSB 211.

Progress:

Western hemlock, produced as paperpots and plugs, both performed satisfactorily when outplanted on the west coast of Vancouver Island. What small differences there were in survival and height were in favour of plugs.

Status:

Assessment 1982.

Report & Distribution:

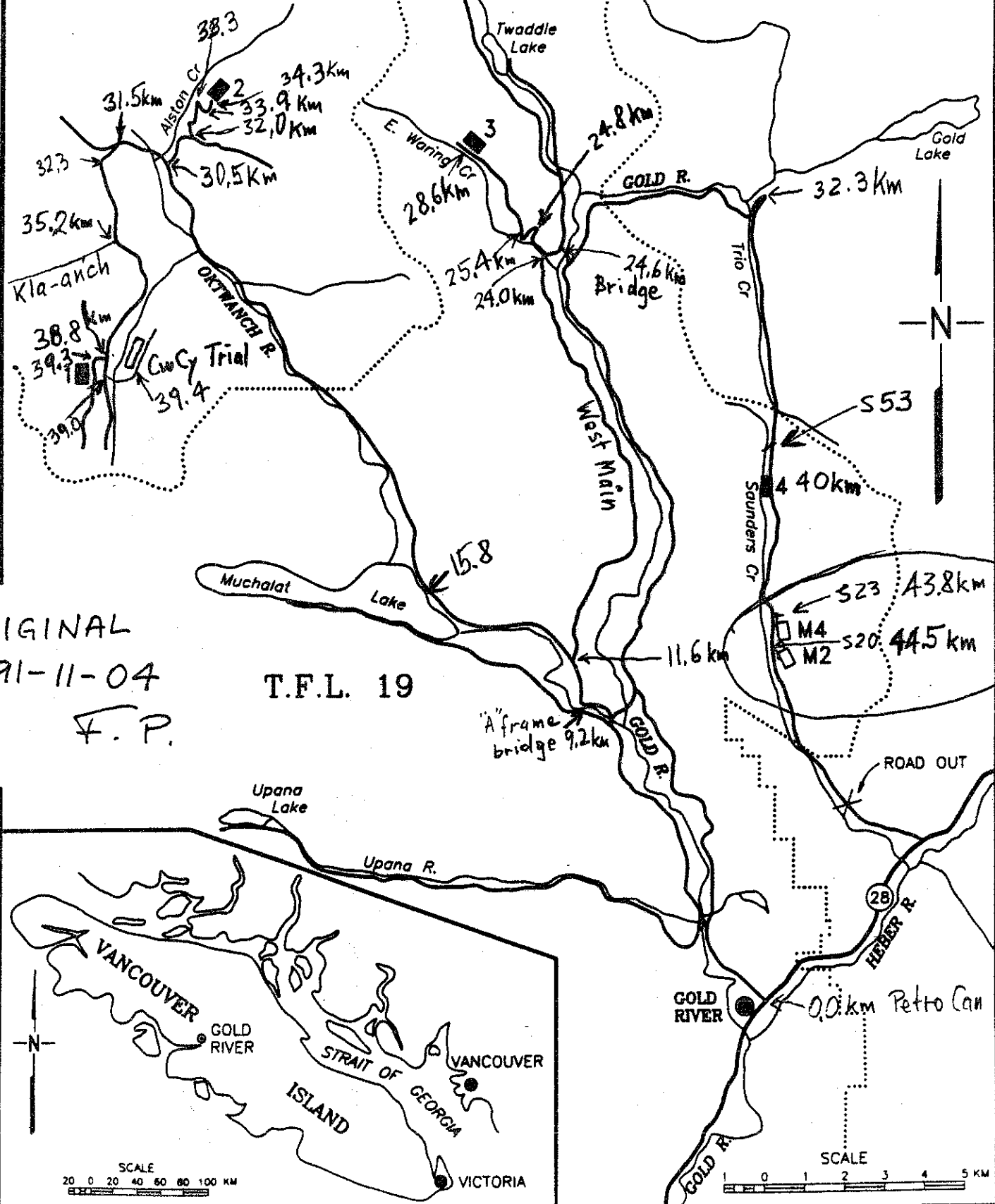
Interim Report 1982:
Regional Research Officers, Regional Silviculture
Officers
District Manager, Campbell River
Field Office, Gold River
Brian McCutcheon, Tahsis Co., Gold River
Reid Collins Nurseries Ltd., Vancouver
Silviculture Branch Library

Incomplete

Final Report by Brian D'Anjou
July 1987

FIGURE 1: Amabilis fir stock type trial

T.F.L. 37

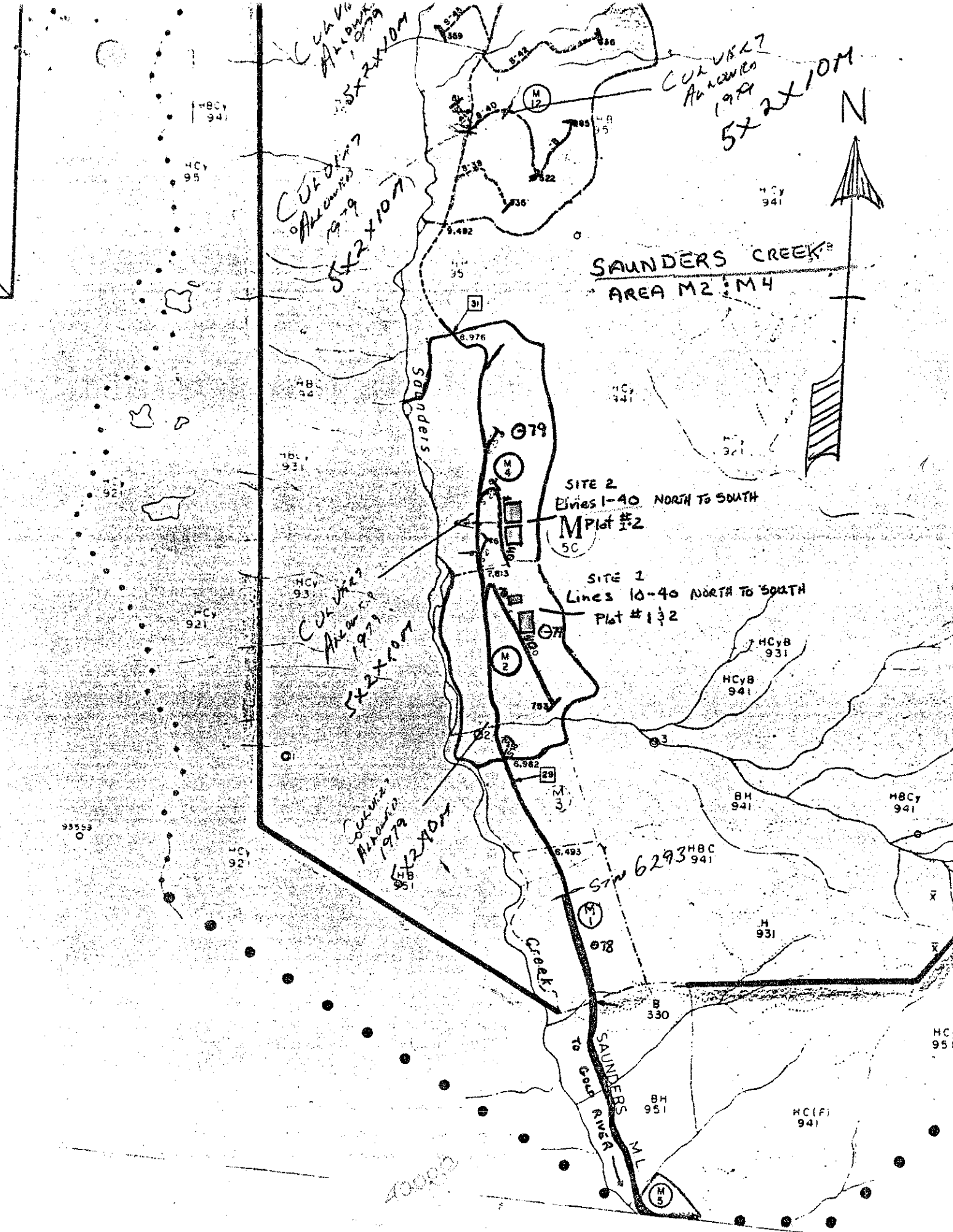


ORIGINAL
1991-11-04
F.P.

T.F.L. 19

GOLD RIVER
0.0 km Petto Can

SCALE
0 1 2 3 4 5 KM



CUL V&A
 ALEXANDER
 1979
 5x2x10M

CUL V&A
 ALEXANDER
 1979
 5x2x10M

CUL V&A
 ALEXANDER
 1979
 5x2x10M

CUL V&A
 ALEXANDER
 1979
 5x2x10M

CUL V&A
 ALEXANDER
 1979
 5x2x10M

SAUNDERS CREEK
 AREA M2 : M4

SITE 2
 Lines 1-40 NORTH TO SOUTH
 M Plot #2
 5C

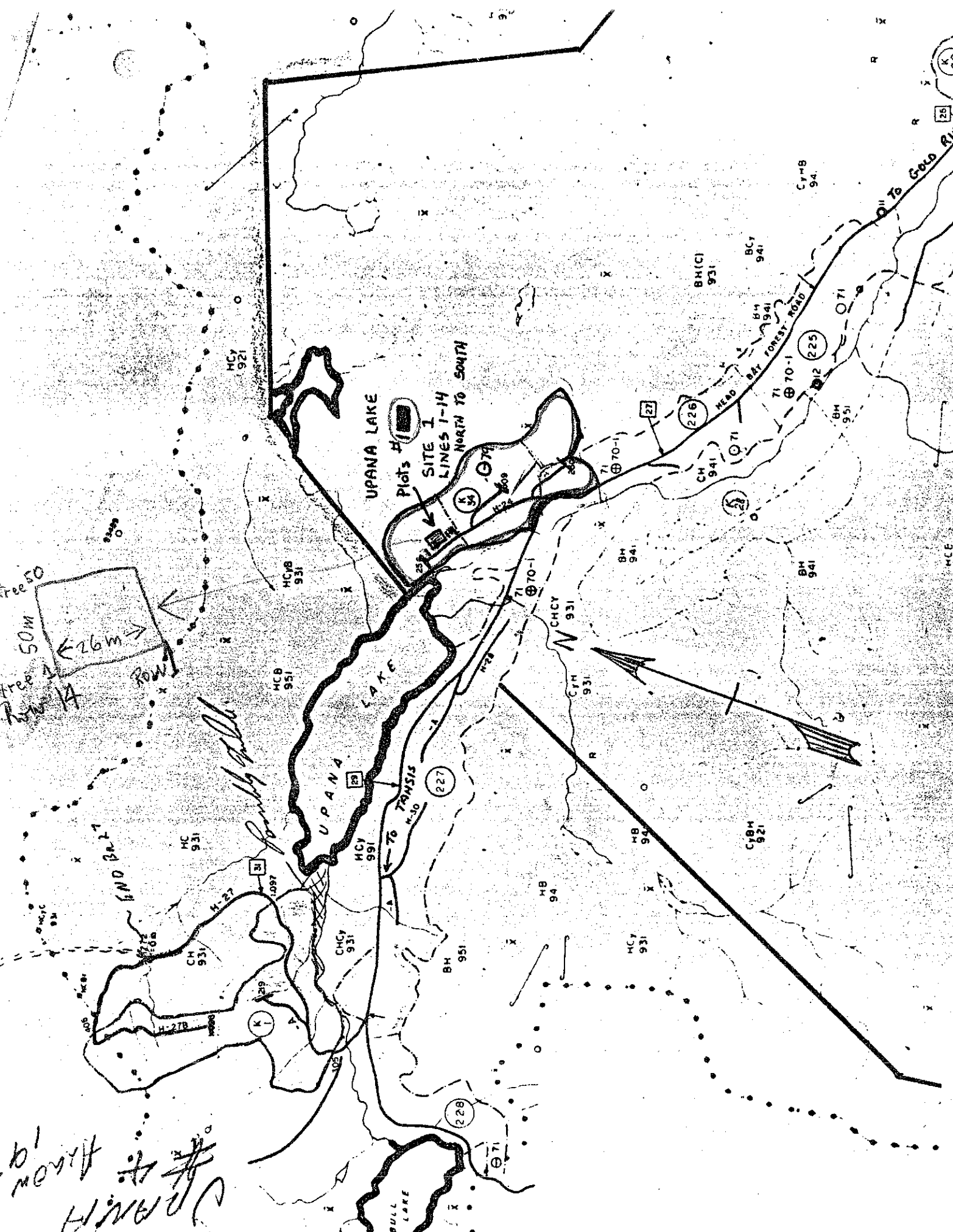
SITE 1
 Lines 10-40 NORTH TO SOUTH
 Plot #132

SIN 6293
 HBC 941

SCALE 1:20,000

Tree 50
Tree 14
50m
26m
ROW

Drawn
by
H. H. H. H.
1977



Boundary

UPANA LAKE

UPANA LAKE

Plots #11

SITE I

LINES 1-14

NORTH TO SOUTH

ROAD TO GOLD RIVER

BULL LAKE



File: TFL 19

Project: 8004

Planting Trials of W. Hem. plugs and paper pots

May 1980

Attention: Frank Pendl

Plots were to be established at Saunders Creek but Brian McCutcheon of Tahsis Co. felt that the Upana Lake site would be more desirable for determining the success of the trials, therefore, we began planting site one at Upana Lake. Before completing plot one, we found that there just wasn't a sufficient number of plantable spots on the lines to continue at this site. Lines 1-9 and 10-14 (partially complete) of plot one still remain at Upana Lake and should be included in further data collections. Due to the small number of plantable spots available, many trees had to be bunched together if the required number of trees per line were to be met.

The remaining plots, including lines 10-14 (partial), and 15-40 of site one, have been established and completed at Saunders Creek in compartments M2 (site 1) and M4 (site 2). Orange stakes were used on all odd numbered lines and blue stakes on even numbered lines. Due to a shortage of small orange tree stakes, yellow stakes were substituted.

Both seedlots were in a healthy condition. Paper pots tended to dry out faster and required much more care in handling as they tended to break up easily.

Planters were inexperienced and had to be shown planting methods and spot selection. Close supervision was maintained throughout the project. Planting dates were as follows: May 14, 20-23. 1980

J. Butcher R.O.
Jim Butcher
F.C. 8
Gold River



File: TFL 19

Project 8004

Planting Trial of W. Hem. plugs and Paper pots

← Plots abandoned

Site 1 Upana Lake, Saunders Creek - M2

<u>Line</u>	<u>Seed Lot</u>	<u>Stock</u>	<u>Planter</u>	<u>Line</u>	<u>Seed Lot</u>	<u>Stock</u>	<u>Planter</u>
Upana Lake Elev. 630m				Saunders Creek - M2 Elev. 600m			
1	3471	plugs	K	21	3471	plugs	M
2	3471	p. pots	M	22	2698	plugs	D
3	3471	p. pots	D	23	2698	plugs	DW
4	3471	plugs	S	24	2698	p. pots	K
5	2698	p. pots	K	25	2698	plugs	D
6	3471	plugs	M	26	3471	plugs	S
7	2698	plugs	S	27	3471	p. pots	M
8	3471	p. pots	D	28	3471	p. pots	DW
9	2698	plugs	R	29	2698	p. pots	K
10	3471	p. pots (23trees)	M	30	3471	p. pots	S
11	3471	plugs (30")	N	31	3471	plugs	D
12	2698	p. pots (21")	K	32	3471	plugs	M
13	2698	p. pots (22")	D	33	2698	plugs	R
14	3471	p. pots (20")	R	34	2698	p pots	K
Saunders Creek - M2				35	3471	plugs	S
10	3471	p. pots	M	36	2698	p. pots	M
11	3471	plugs	N	37	2698	p. pots	D
12	2698	p. pots	K	38	3471	p. pots	R
13	2698	p. pots	D	39	2698	plugs	S
14	3471	p. pots	R	40	3471	p. pots	K
15	2698	plugs	M				
16	2698	p. pots	D				
17	2698	plugs	S				
18	2698	p. pots	K				
19	3471	plugs	K				
20	2698	plugs	N				

Site 2, Area M4, Saunders Creek Elev. 660m

Washout

<u>Line</u>	<u>Seed Lot</u>	<u>Stock</u>	<u>Planter</u>	<u>Line</u>	<u>Seed Lot</u>	<u>Stock</u>	<u>Planter</u>
1	2698	plug	M	21	3471	P. pots	R
2	3471	P. pots	D	22	2698	P. pots	K
3	3471	plug	S	23	3471	P. Pots	N
4	2698	plug	K	24	2698	P. pots	M
5	2698	P. pots	M	25	2698	plug	D
6	3471	plug	D	26	3471	plug	R
7	3471	P. pots	S	27	2698	plug	K
8	2698	plug	K	28	2698	plug	M
9	3471	P. Pots	M	29	2698	P. Pots	D
10	2698	P. pots	D	30	3471	P. pots	N
11	2698	P. Pots	S	31	3471	plug	R
12	2698	plug	K	32	2698	P. Pots	K
13	3471	plug	M	33	3471	plug	M
14	2698	P. pots	D	34	3471	P. pots	D
15	3471	P. pots	S	35	3471	P. pots	N
16	2698	P. pots	K	36	2698	P. pots	R
17	3471	plug	K	37	3471	plug	K
18	2698	plug	N	38	2698	plug	M
19	3471	P. pots	M	39	3471	plug	D
20	3471	plug	D	40	2698	plug	N

Washout

Washout