

Importing XML Harvest History data into Excel

This option is available for the Scaling History Report, the Billing History Report and many Queries in HBS.

Use the “Generate XML Collection” Button

REQUIRED * indicates a required field

* Month Scaled Interval (up to 12 months)

From To

Region/District Harvested

Mark Holder Client No/Loc

File Type

Mgmt Unit Type Mgmt Unit No

Forest File ID

Timber Mark

Region/District Scaled

Scale Site

Filter by Species/Product/Grade

Species

Product

Grade

Exclusions

Exclude Firmwood Reject

Exclude Waste/Residue

Done Internet 100%

You'll get this screen opening in the same window. You'll need to use the back button to navigate away from this screen later.

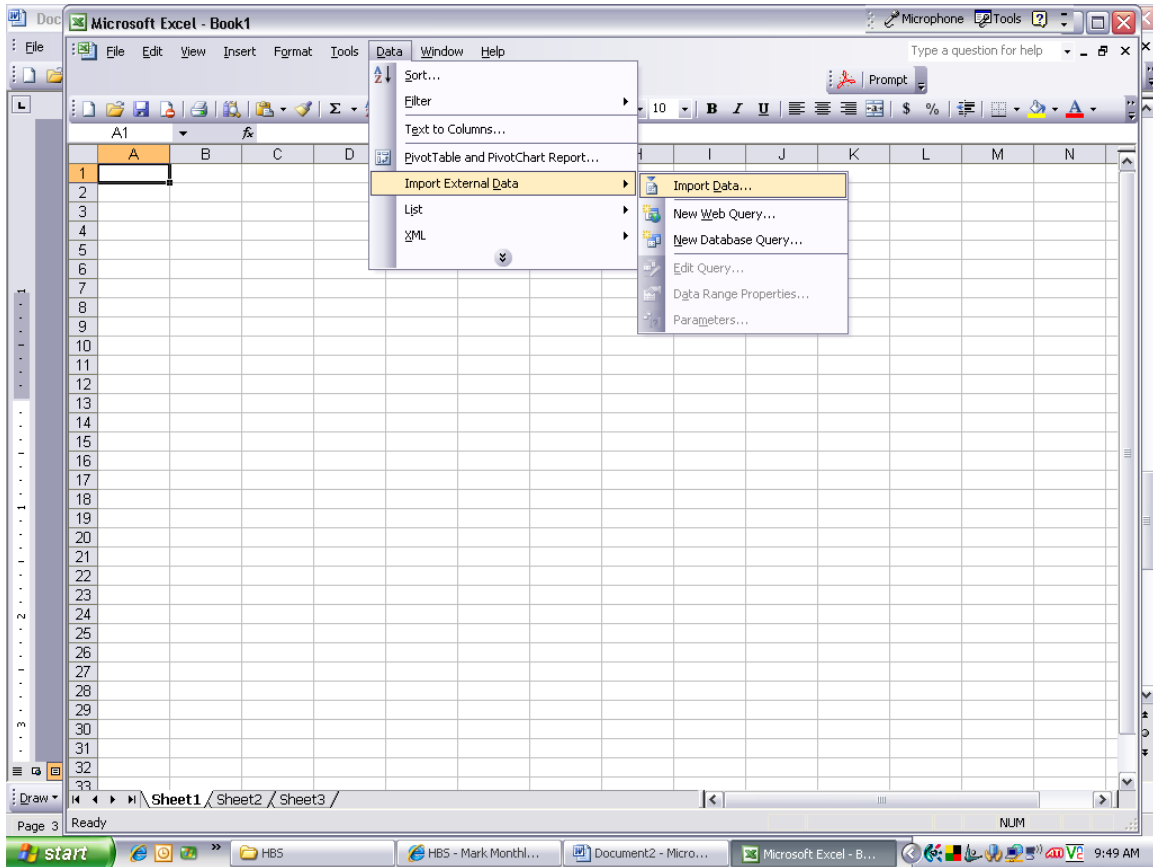
```
<?xml version="1.0" encoding="UTF-8" ?>
- <hbs-request xsi:schemaLocation="gov.bc.ca/forests/hbs/statement/v1
  http://psc2.for.gov.bc.ca/HBS/hbs/schemas/HBS_Scaling_History_Request_Schema_V2_0.xsd"
  xmlns:xsi="http://www.w3.org/2001/XMLSchema-instance" xmlns="gov.bc.ca/forests/hbs/statement/v1">
- <hbs-request-header>
  <request-id>1209573798735</request-id>
  <date-created>2008-04-30</date-created>
  <time-created>09:43:18</time-created>
  <requestor-email>Chris.Curry@gov.bc.ca</requestor-email>
  <request-parameters>Document Type: scaling, From Date: 2008-Jan-01, To Date: 2008-Mar-31, Timber Mark1: BG570,
    Species: All, Product: Log, Grade: All, Exclusions: Waste/Residue, Firmwood Rejects</request-parameters>
  <requestor-relationship>MOF</requestor-relationship>
  <fine-print>Data items severed because of FOIPP concerns have been replaced with the value ***** or omitted.</fine-print>
</hbs-request-header>
- <MSH>
  <document-count>292</document-count>
- <mark-monthly-scaling-history>
  <scaling-year>2008</scaling-year>
  <scaling-month>1</scaling-month>
  <billing-type>NP</billing-type>
  <billing-type-description>Normal Production</billing-type-description>
  <total-volume-scaled>0</total-volume-scaled>
  <total-amount-scaled>20.141</total-amount-scaled>
  <species-code>BA</species-code>
  <species-description>Balsam</species-description>
  <product-code />
  <product-description>Logs</product-description>
  <grade-code>1</grade-code>
  <grade-description>Grade 1</grade-description>
  <region-harvested-code>RSI</region-harvested-code>
  <region-harvested-description>Southern Interior Forest Region</region-harvested-description>
  <district-harvested-code>DAB</district-harvested-code>
  <district-harvested-description>Arrow Boundary Forest District</district-harvested-description>
  <timber-mark>BG570</timber-mark>
  <forest-file-id>BG570</forest-file-id>
  <file-type-code>B08</file-type-code>
  <file-type-description>Exportable Crown Grant</file-type-description>
  <mgmt-unit-type-code>V</mgmt-unit-type-code>
  <mgmt-unit-type-description>TIMBER SUPPLY BLOCK</mgmt-unit-type-description>
  <mgmt-unit-id>01M</mgmt-unit-id>
  <mark-holder-client-type-code>C</mark-holder-client-type-code>
  <mark-holder-client-type-description>Corporation</mark-holder-client-type-description>
  <mark-holder-client-number>00005319</mark-holder-client-number>
```

Click "File", "Save As", rename and save the file. It will automatically have an .xml file extension.

If you have order a large amount of data, check the bottom of the file to ensure it has finished loading the page. To do this, click "Ctrl" "End" and you will see

Open Excel, click “Data”, “Import External Data”, “Import Data”. Or you can use the “XML” option.

The File, Open, method works better for some xml files. If you use File, Open, be sure to select the “Open as read only workbook” option.



You may get a
“There is a problem with the XML schema.....” “Click OK to have Excel create a
schema.....” message. Click OK.

Click OK again to accept the defaults.

The screenshot shows a Microsoft Excel spreadsheet with the following data:

	A	B	C	D	E
1	ns1:request-id	ns1:date-created	ns1:time-created	ns1:requestor-email	ns1:request-parameters
2	1.20957E+12	4/30/2008	9:43:18	Chris.Curry@gov.bc.ca	Document Type: scaling, From Date: 2008-Jan-01, To Date: 2008-Mar-31, Timb
3	1.20957E+12	4/30/2008	9:43:18	Chris.Curry@gov.bc.ca	Document Type: scaling, From Date: 2008-Jan-01, To Date: 2008-Mar-31, Timb
4	1.20957E+12	4/30/2008	9:43:18	Chris.Curry@gov.bc.ca	Document Type: scaling, From Date: 2008-Jan-01, To Date: 2008-Mar-31, Timb
5	1.20957E+12	4/30/2008	9:43:18	Chris.Curry@gov.bc.ca	Document Type: scaling, From Date: 2008-Jan-01, To Date: 2008-Mar-31, Timb
6	1.20957E+12	4/30/2008	9:43:18	Chris.Curry@gov.bc.ca	Document Type: scaling, From Date: 2008-Jan-01, To Date: 2008-Mar-31, Timb
7	1.20957E+12	4/30/2008	9:43:18	Chris.Curry@gov.bc.ca	Document Type: scaling, From Date: 2008-Jan-01, To Date: 2008-Mar-31, Timb
8	1.20957E+12	4/30/2008	9:43:18	Chris.Curry@gov.bc.ca	Document Type: scaling, From Date: 2008-Jan-01, To Date: 2008-Mar-31, Timb
9	1.20957E+12	4/30/2008	9:43:18	Chris.Curry@gov.bc.ca	Document Type: scaling, From Date: 2008-Jan-01, To Date: 2008-Mar-31, Timb
10	1.20957E+12	4/30/2008	9:43:18	Chris.Curry@gov.bc.ca	Document Type: scaling, From Date: 2008-Jan-01, To Date: 2008-Mar-31, Timb
11	1.20957E+12	4/30/2008	9:43:18	Chris.Curry@gov.bc.ca	Document Type: scaling, From Date: 2008-Jan-01, To Date: 2008-Mar-31, Timb
12	1.20957E+12	4/30/2008	9:43:18	Chris.Curry@gov.bc.ca	Document Type: scaling, From Date: 2008-Jan-01, To Date: 2008-Mar-31, Timb
13	1.20957E+12	4/30/2008	9:43:18	Chris.Curry@gov.bc.ca	Document Type: scaling, From Date: 2008-Jan-01, To Date: 2008-Mar-31, Timb
14	1.20957E+12	4/30/2008	9:43:18	Chris.Curry@gov.bc.ca	Document Type: scaling, From Date: 2008-Jan-01, To Date: 2008-Mar-31, Timb
15	1.20957E+12	4/30/2008	9:43:18	Chris.Curry@gov.bc.ca	Document Type: scaling, From Date: 2008-Jan-01, To Date: 2008-Mar-31, Timb
16	1.20957E+12	4/30/2008	9:43:18	Chris.Curry@gov.bc.ca	Document Type: scaling, From Date: 2008-Jan-01, To Date: 2008-Mar-31, Timb
17	1.20957E+12	4/30/2008	9:43:18	Chris.Curry@gov.bc.ca	Document Type: scaling, From Date: 2008-Jan-01, To Date: 2008-Mar-31, Timb
18	1.20957E+12	4/30/2008	9:43:18	Chris.Curry@gov.bc.ca	Document Type: scaling, From Date: 2008-Jan-01, To Date: 2008-Mar-31, Timb
19	1.20957E+12	4/30/2008	9:43:18	Chris.Curry@gov.bc.ca	Document Type: scaling, From Date: 2008-Jan-01, To Date: 2008-Mar-31, Timb
20	1.20957E+12	4/30/2008	9:43:18	Chris.Curry@gov.bc.ca	Document Type: scaling, From Date: 2008-Jan-01, To Date: 2008-Mar-31, Timb
21	1.20957E+12	4/30/2008	9:43:18	Chris.Curry@gov.bc.ca	Document Type: scaling, From Date: 2008-Jan-01, To Date: 2008-Mar-31, Timb
22	1.20957E+12	4/30/2008	9:43:18	Chris.Curry@gov.bc.ca	Document Type: scaling, From Date: 2008-Jan-01, To Date: 2008-Mar-31, Timb
23	1.20957E+12	4/30/2008	9:43:18	Chris.Curry@gov.bc.ca	Document Type: scaling, From Date: 2008-Jan-01, To Date: 2008-Mar-31, Timb
24	1.20957E+12	4/30/2008	9:43:18	Chris.Curry@gov.bc.ca	Document Type: scaling, From Date: 2008-Jan-01, To Date: 2008-Mar-31, Timb
25	1.20957E+12	4/30/2008	9:43:18	Chris.Curry@gov.bc.ca	Document Type: scaling, From Date: 2008-Jan-01, To Date: 2008-Mar-31, Timb
26	1.20957E+12	4/30/2008	9:43:18	Chris.Curry@gov.bc.ca	Document Type: scaling, From Date: 2008-Jan-01, To Date: 2008-Mar-31, Timb
27	1.20957E+12	4/30/2008	9:43:18	Chris.Curry@gov.bc.ca	Document Type: scaling, From Date: 2008-Jan-01, To Date: 2008-Mar-31, Timb
28	1.20957E+12	4/30/2008	9:43:18	Chris.Curry@gov.bc.ca	Document Type: scaling, From Date: 2008-Jan-01, To Date: 2008-Mar-31, Timb
29	1.20957E+12	4/30/2008	9:43:18	Chris.Curry@gov.bc.ca	Document Type: scaling, From Date: 2008-Jan-01, To Date: 2008-Mar-31, Timb
30	1.20957E+12	4/30/2008	9:43:18	Chris.Curry@gov.bc.ca	Document Type: scaling, From Date: 2008-Jan-01, To Date: 2008-Mar-31, Timb
31	1.20957E+12	4/30/2008	9:43:18	Chris.Curry@gov.bc.ca	Document Type: scaling, From Date: 2008-Jan-01, To Date: 2008-Mar-31, Timb
32	1.20957E+12	4/30/2008	9:43:18	Chris.Curry@gov.bc.ca	Document Type: scaling, From Date: 2008-Jan-01, To Date: 2008-Mar-31, Timb
33	1.20957E+12	4/30/2008	9:43:18	Chris.Curry@gov.bc.ca	Document Type: scaling, From Date: 2008-Jan-01, To Date: 2008-Mar-31, Timb

The first series of columns are not of interest, nor are many of the others, but each column is named by the schema and pivot tables work well with no further modifications.