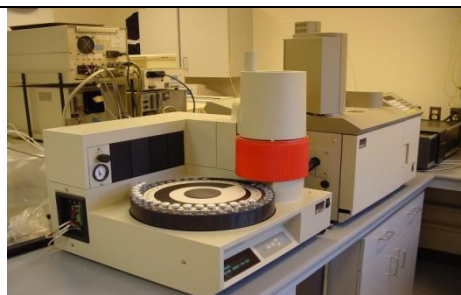




Located in Victoria, the Analytical Laboratory is a component of the Knowledge Management Branch, Technical Services. The laboratory has provided support services within the Natural Resource Sector for over 35 years. These services are also available to collaborative agencies, on a cost recovery basis.



Instrumentation:

- Dual View ICP-OES spectrometer
- High perf. liquid chromatograph
- Ion chromatograph
- GC/MS
- GC/Automated headspace analyzer
- NCS elemental analyzers
- Automatic titrator system
- Alpkem ion analysis system
- UV/visible spectrophotometer
- Infrared spectrophotometer
- PH/ion and conductivity meters

Major Equipment:

- High pressure microwave digestors
- Automated soxhlet extractors
- Centrifuges, centrifugal evaporator
- Pressure plate apparatus
- Linear rate cryogenic-freezer
- Programmable freeze chamber
- Liquid nitrogen cryo-freezers
- Freeze dryer
- Mills and grinders
- Incubators and drying ovens



Typical samples:

- Plant tissue(fresh and dried)
- Pollen
- Wood and woody debris
- Soils
- Leachates
- Fertilizers
- Water
- Air
- Soil gases
- Increment Cores



Example analyses:

- Soil:**
- Total carbon, nitrogen and sulphur
 - Extractable elements and ions
 - pH, salinity
 - Water retention curves
- Water:**
- Anions and cations
 - Dissolved/suspended solids
 - pH, alkalinity and conductivity
 - TOC/DON/DIN

Plant Tissue:

- Total macro/micronutrients
- Physiological tests
- Pigments
- Carbohydrates
- Terpenes
- Dendrochronology



Gases:

- Permanent gases
- Hydrocarbons
- Other volatiles

Quality is tightly controlled through the use of standard reference materials, control samples, and international sample exchange programs.

The Laboratory can conduct many other tests not listed, and would be pleased to discuss any analytical request with interested clients.