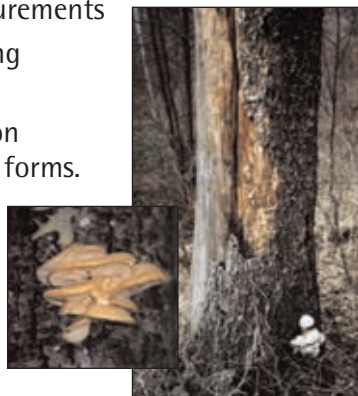




## During these workshops you will learn to:

- understand the use of wildlife trees and their role in forested ecosystems
- identify high-value wildlife tree characteristics
- describe site assessment factors
- inspect and identify dangerous tree defects
- determine levels of disturbance for various work activities
- make appropriate safety decisions
- perform detailed tree assessments and related measurements
- inspect rooting systems
- collect data on FS 502a field forms.



# Wildlife Tree Committee Mandate

To promote the conservation of wildlife trees and associated stand-level biodiversity in a safe and operationally efficient manner in forestry, wildfire operations, park and urban environments.

The WTC is a cooperative partnership representing the Workers' Compensation Board, Ministry of Water, Lands and Air Protection and the Ministry of Forests.



### Prerequisites:

- minimum 3 years experience working with trees
- grade 10 equivalency skills
- knowledge of native trees species identification.

Upon successful completion you will receive qualification as a Wildlife Danger Tree Assessor for a four-year period.

For more information on wildlife trees go to the WTC website: <http://www.for.gov.bc.ca/hfp/wlt/>



# The Wildlife Danger Tree Assessor's Course



Retention of living and dead trees, singly and in patches, is key to maintaining biodiversity.

### Learn how to:

- recognize important wildlife trees,
- assess risk of tree failure and maintain or incorporate wildlife trees safely within the operational setting.



# Forest Harvesting and Silviculture Module

Learn how to assess trees in operational forestry settings including: planting, spacing, ground-based harvesting, cable harvesting, helicopter logging, and roadsides.



# Parks and Recreation Module

Campgrounds, trails, interpretive areas, beaches, parking, and picnic areas in natural tree settings present their own set of safety risks.

Learn how to assess trees and manage these risks in parks and recreation settings



# Wildland Fire Safety Module

This module is focused on assessing trees in wildfire environments where many trees will have been damaged by fire. Therefore the primary objective of this course is worker safety.



The assessment process is used for evaluating trees in and around:

- camps
- staging areas
- fireline operations
- air operations
- roadsides and other access routes.

