

# Adapting forest and rangeland policy and practices in British Columbia for climate change



Sybill Haeussler ([haeussl@unbc.ca](mailto:haeussl@unbc.ca)) FFESC Research Coordinator, Ecosystem Science and Management Program, UNBC

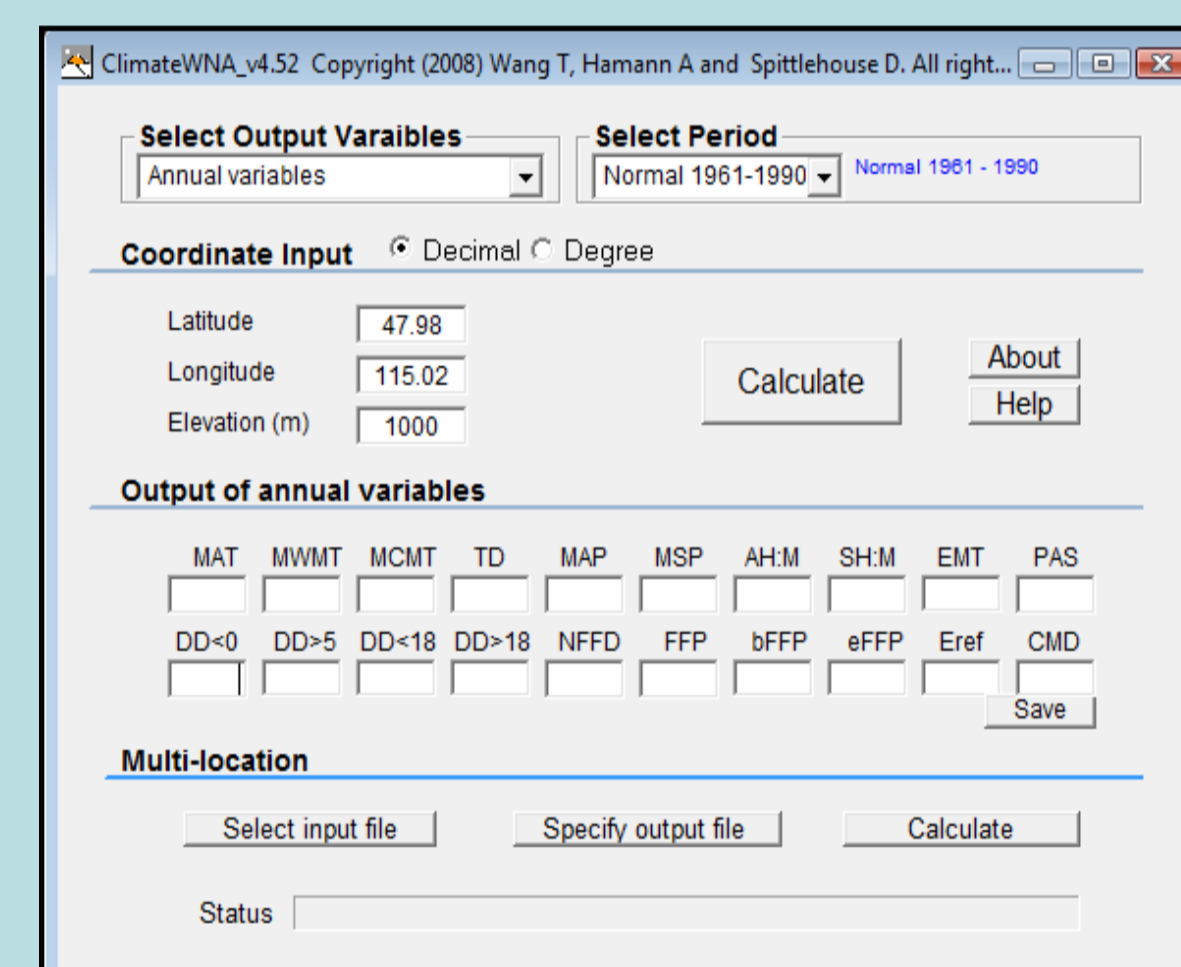
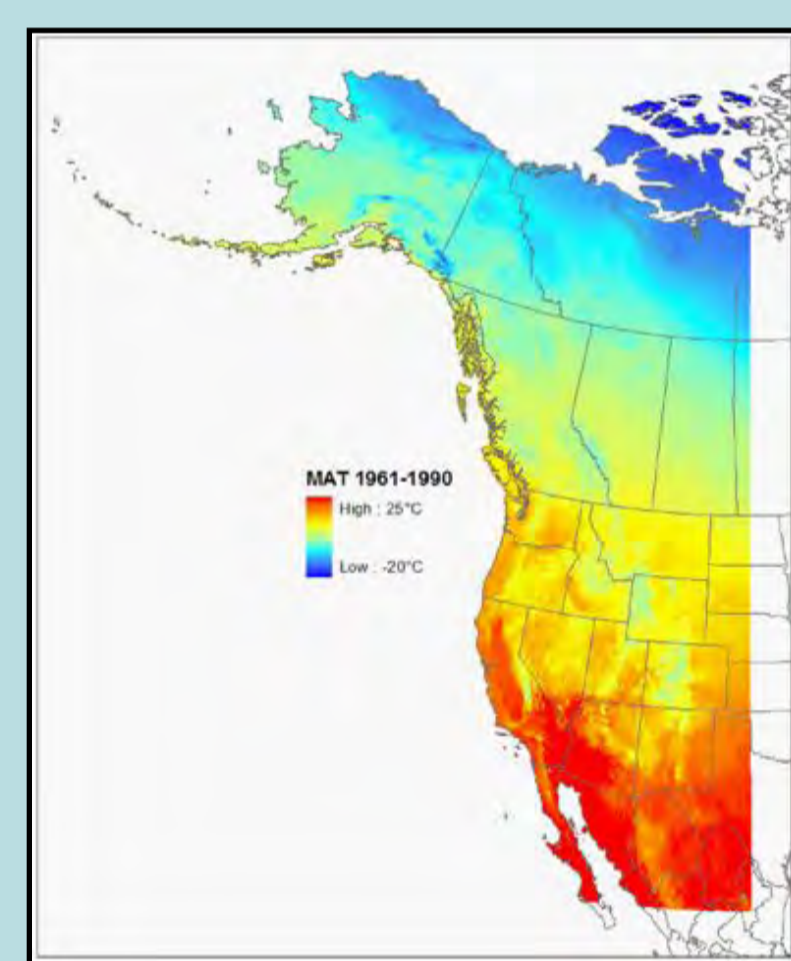
The Future Forest Ecosystem Scientific Council of British Columbia (FFESC), a research partnership of the Province of BC, UNBC and UBC, has undertaken a program of research to assist forest and rangeland policy-makers, practitioners and local communities in adapting to the effects and uncertainty of climate change.

The research program began in 2008 and will end in 2012. This poster introduces a few of the research products and outcomes completed and underway.

## 1. Modeling and decision-support tools

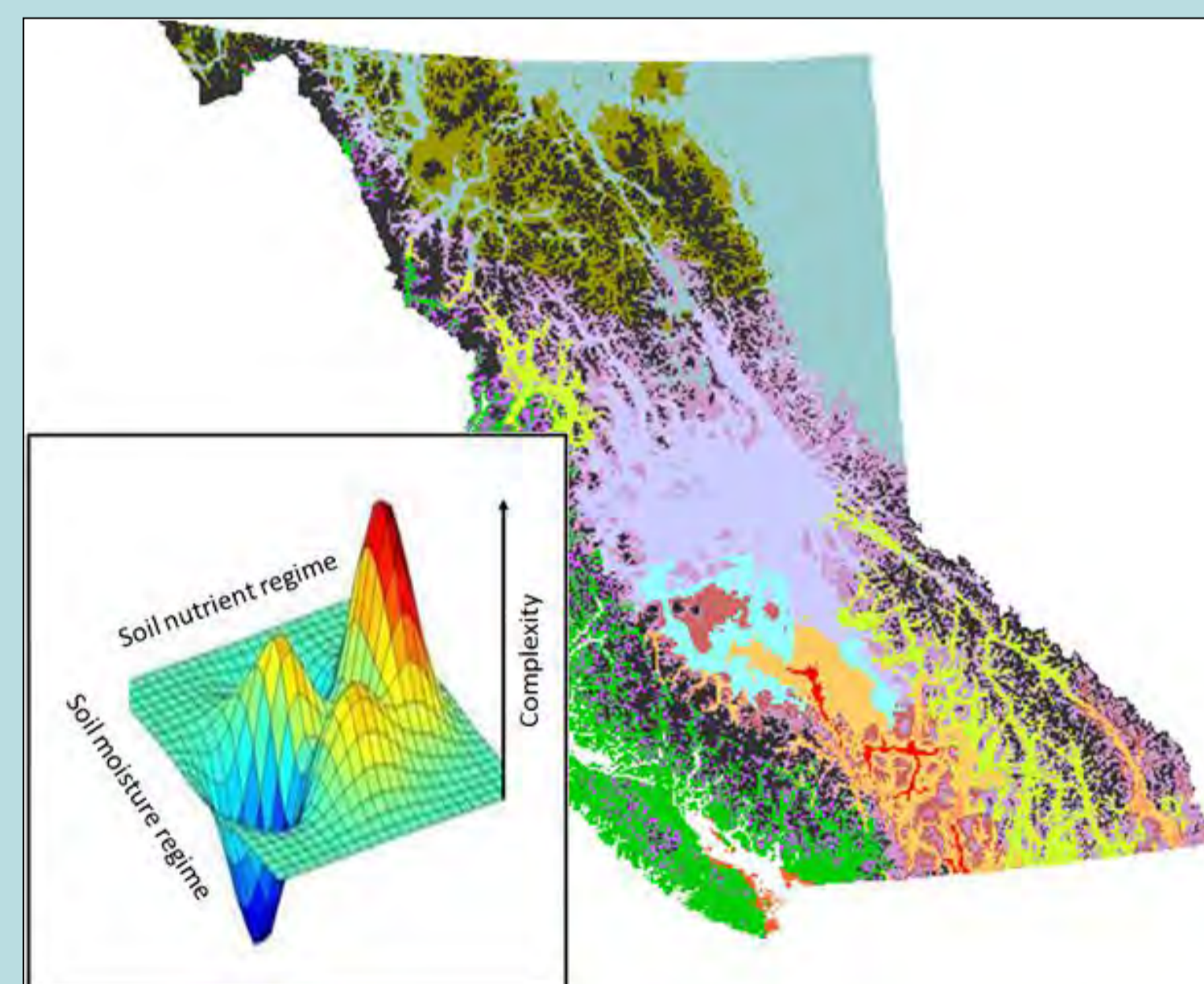
**High Resolution Spatial Climate Data:** ClimateWNA provides interpolated climate data and downscaled climate model projections for any location in western North America. Available at: [http://www.genetics.forestry.ubc.ca/cfcg/ClimateWNA\\_web/](http://www.genetics.forestry.ubc.ca/cfcg/ClimateWNA_web/).

- Guidelines for selecting and using IPCC climate change scenarios Contact [Dave.Spittlehouse@gov.bc.ca](mailto:Dave.Spittlehouse@gov.bc.ca)



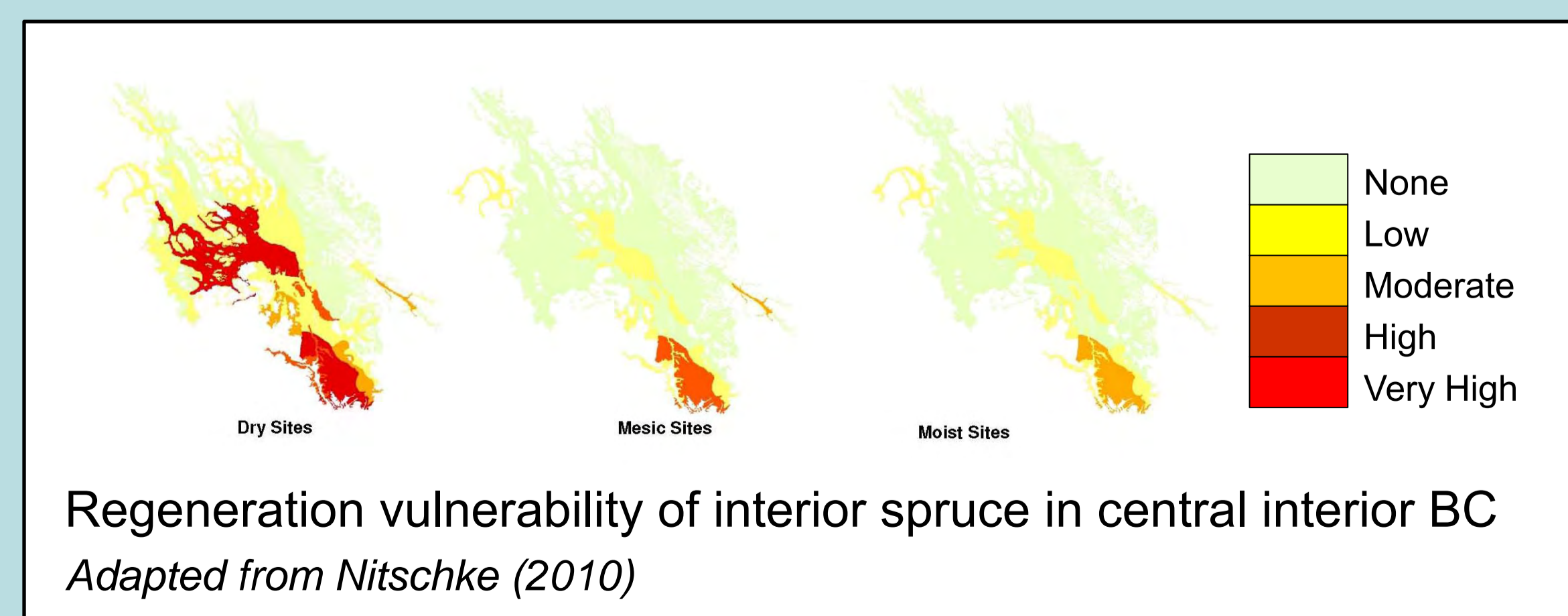
### Adapting BC's Biogeoclimatic Ecosystem Classification (BEC) system for climate change impacts:

- improving Hamann and Wang's (2006) bioclimatic envelope projections for BC's tree species and ecosystems using the Random Forests model. Contact [Tongli.Wang@ubc.ca](mailto:Tongli.Wang@ubc.ca)
- adapting BEC to address non-linear and non-equilibrium ecosystem dynamics (alternative stability domains, fold-catastrophes and chaos). Contact Sybill at: [haeussl@unbc.ca](mailto:haeussl@unbc.ca)
- a Facebook site "BEC Forum" for discussing BEC renewal.
- drought risk maps for BEC sites series in the central interior. Contact [Bruce.Rogers@gov.bc.ca](mailto:Bruce.Rogers@gov.bc.ca)



### Upgrading the Tree and Climate Assessment Tool (TACA):

Contact Craig Nitschke ([crnitschke@gmail.com](mailto:crnitschke@gmail.com))



## 2. Strategy and synthesis reports



## 3. Engaging northern BC communities in climate change adaptation

- Nadina Timber Supply Area (Burns Lake & Houston). Contact [Don.Morgan@gov.bc.ca](mailto:Don.Morgan@gov.bc.ca)
- City of Prince George (myPG and PG-Forest). Contact Tracy Summerville ([summervi@unbc.ca](mailto:summervi@unbc.ca))
- Dome Creek and McBride Community Forest. Contact Darwyn Coxson ([coxson@unbc.ca](mailto:coxson@unbc.ca))
- Northwest Skeena (Terrace, Prince Rupert, Lax Kw'alaams) Contact [Katie.McPherson@brinkman.ca](mailto:Katie.McPherson@brinkman.ca)

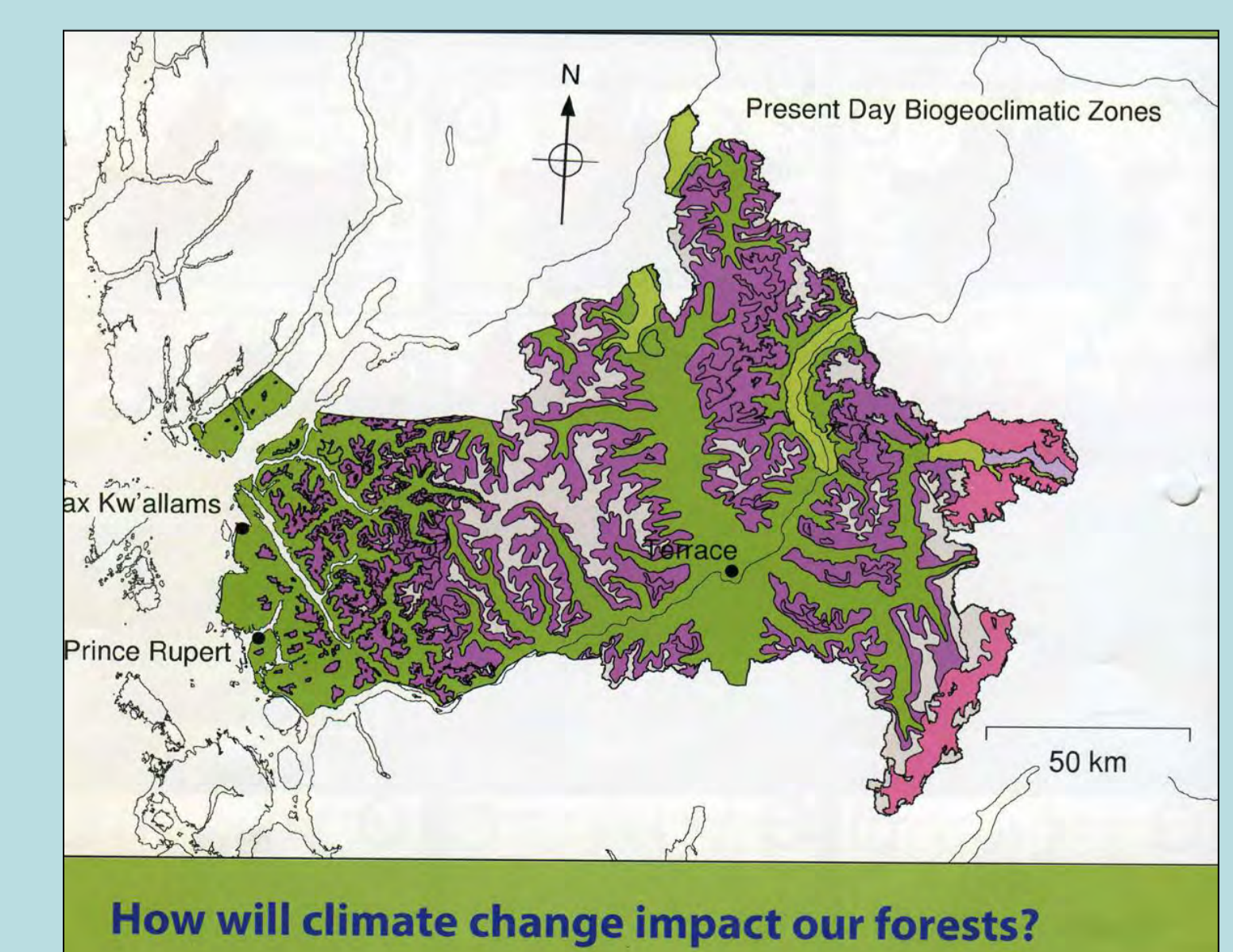


## Further Information

Check out the FFESC website:

[http://www.for.gov.bc.ca/hts/future\\_forests/council/index.htm](http://www.for.gov.bc.ca/hts/future_forests/council/index.htm)

Contact Sybill [haeussl@unbc.ca](mailto:haeussl@unbc.ca) 250 847-6082 or 250-877-3304(cell)  
or [Kristine.Weese@gov.bc.ca](mailto:Kristine.Weese@gov.bc.ca) 250-558-1760



BV Research Centre

City of Prince George: my PG

<http://web.unbc.ca/~vetbeta/featured-11.htm>

Northwest Skeena project: Brinkman Forest Ltd.