

# FRPA Resource Evaluation Program

---

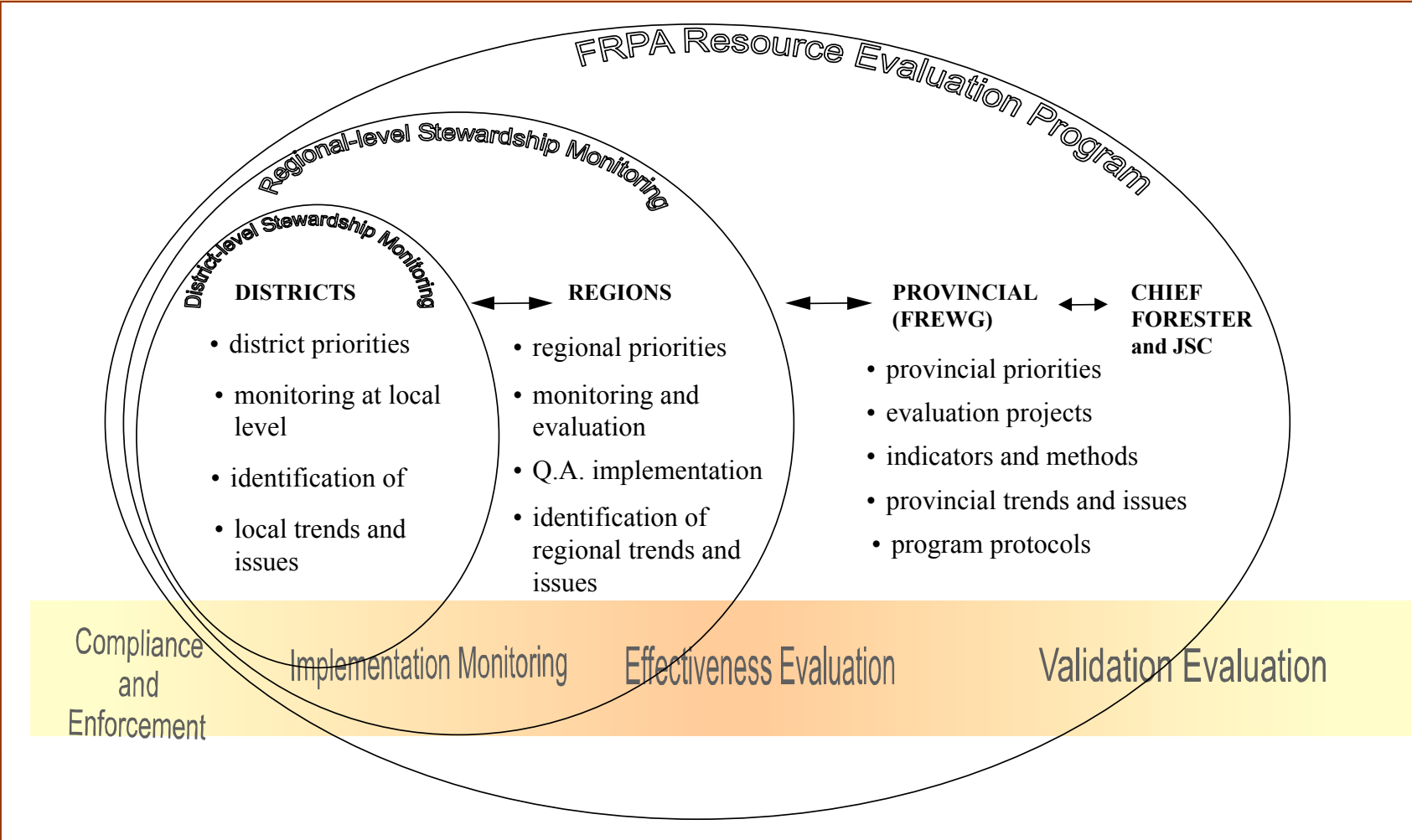


# FREP Objectives

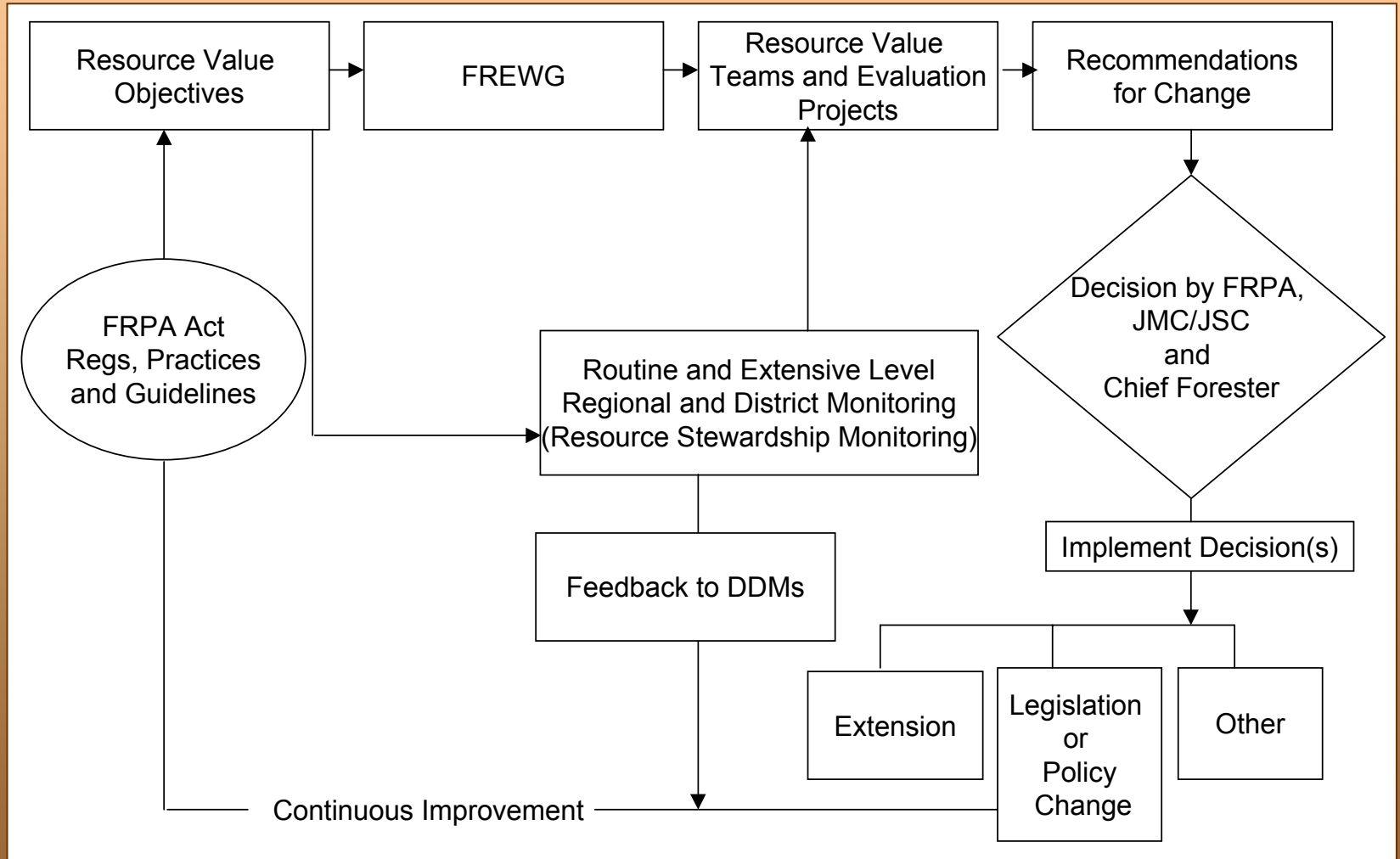
---

...to determine if forest and range policies and practices in BC are achieving government's objectives for FRPA resource values...

# FREP Structure



# FREP Continuous Improvement Cycle



# Resource Stewardship Monitoring Pilots

---

Test the proposed model including:



- Indicators and protocols

- Site selection criteria

- Quality assurance (including training)
- Data collection and analysis

# Stand-level biodiversity indicators

---

- % Area retained
- Presence of Ecological Anchors
- Trees WT Class 3+
- Tall Trees WT Class 3+
- Large Trees ( >50cm)
- CWD

# Stand-level biodiversity results

---

- Six districts -- 39 blocks
- 100% of cutblocks had retention
- 59% with ecological anchors
- Average retention 28% (5% unconstrained)
- Windthrow
- Risk ratings -- 15 low, 7 moderate, 2 high, 1 very high

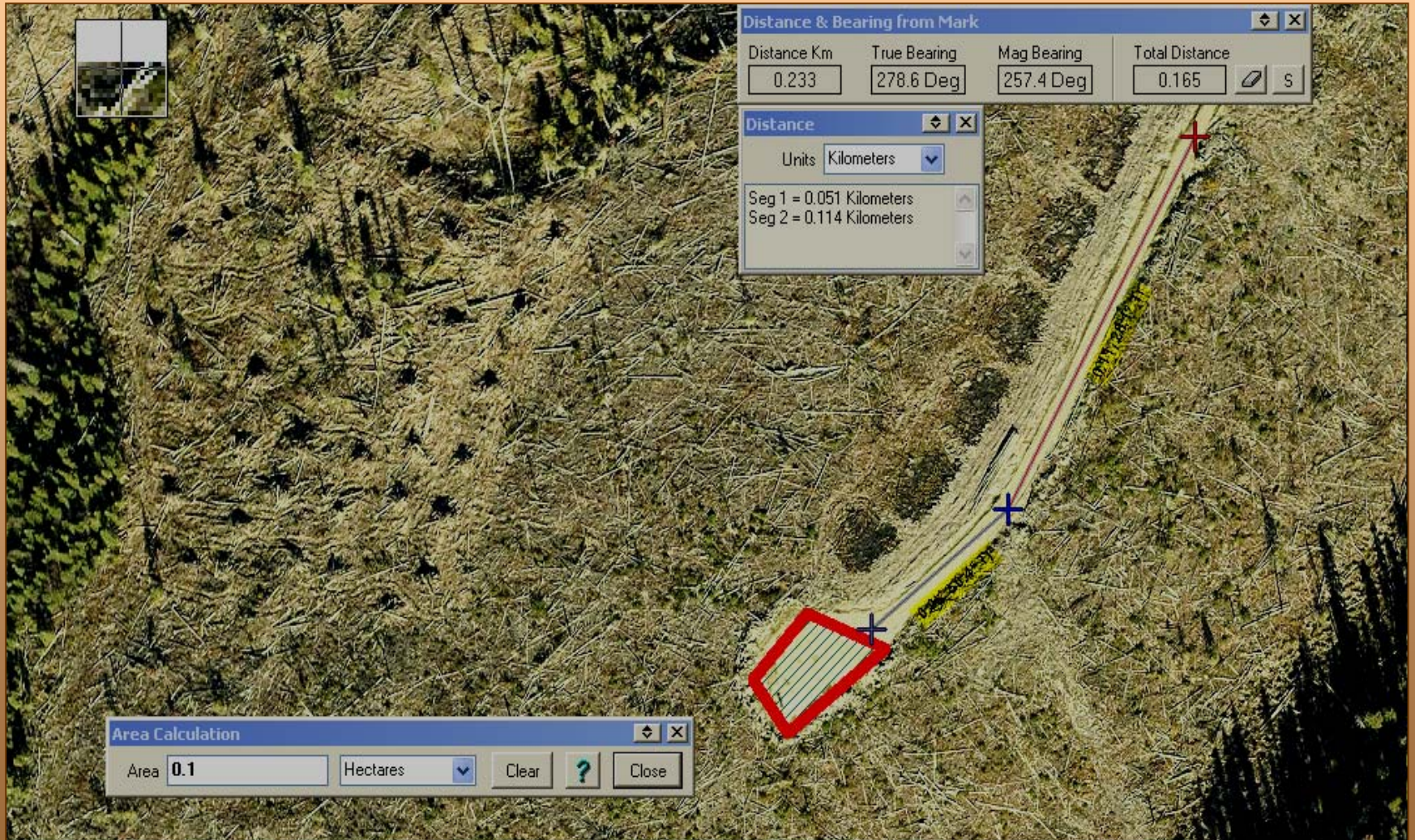


# Soils indicators

---

- % access structures
- Area of landslides, drainage diversion and erosion caused by access
- Disturbance to natural drainage patterns
- Soil disturbance hazard and level
- Green tree retention

# Soils -- air photo analysis



# Riparian indicators

---

- Channel bed disturbance
- Channel bank disturbance
- LWD processes
- Channel morphology
- Aquatic connectivity
- Fish cover diversity
- Moss abundance and condition
- Fine sediments
- Aquatic invertebrate diversity
- Windthrow
- Riparian soil disturbance
- LWD supply
- Shade & microclimate
- Disturbance-increaser plants

# Riparian results

---



- 5 districts -- 47 sites
- 19 functioning, 8 at risk, 9 non-functioning
- 16/22 -- S6 streams with problems
- Fine sediment -- road related

# The Pilots -- Lessons Learned

---

- Training
- Ease of use
- Digital
- Consistency
- Air photos
- Resources
- On-site validation
- Integrate stand and landscape
- Licensee cooperation needed
- Big picture
- QA



We're ready to go!

# Implementation in 2005

---



- Biodiversity
- Riparian

# New pilots in 2005

---

- Soils
- Water quality?
- Other value(s)?



# Resources -- staff

---

## Implementation:

- 10 days/district per value (20 sites each value)
- 2005 -- 2 values -- 20 field days/district
- 2006 -- 4 values -- 40 field days/district
- 2007 -- 6 values -- 40+ field days/district

## Pilots:

- 5-10 field days/value for each participating district

# Issues and Decisions

---

- Top down direction
  - memo
  - service plan and IPMs
  - EPDPs
- Number of districts involved
  - implementation
  - new pilots
- Number of sites per value

