

Fisheries Sensitive Watersheds (FSW)

FSW Effectiveness Monitoring

FREP Continuous Improvement
Provincial Workshop
Victoria B.C.
February 26th & 27th, 2008

Lars Reese-Hansen, FSW Coordinator
Ecosystems Planning Biologist, MOE
Victoria, B.C.
(250-387-3980)

lars.reesehansen@gov.bc.ca



Summary

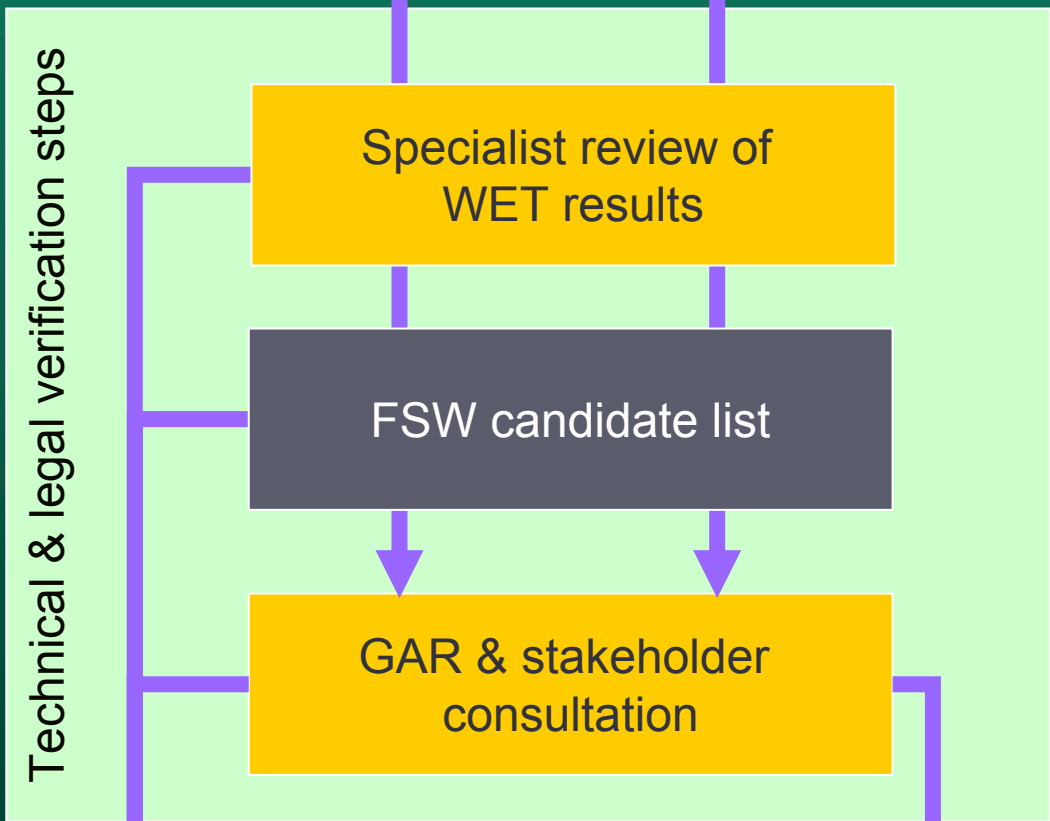
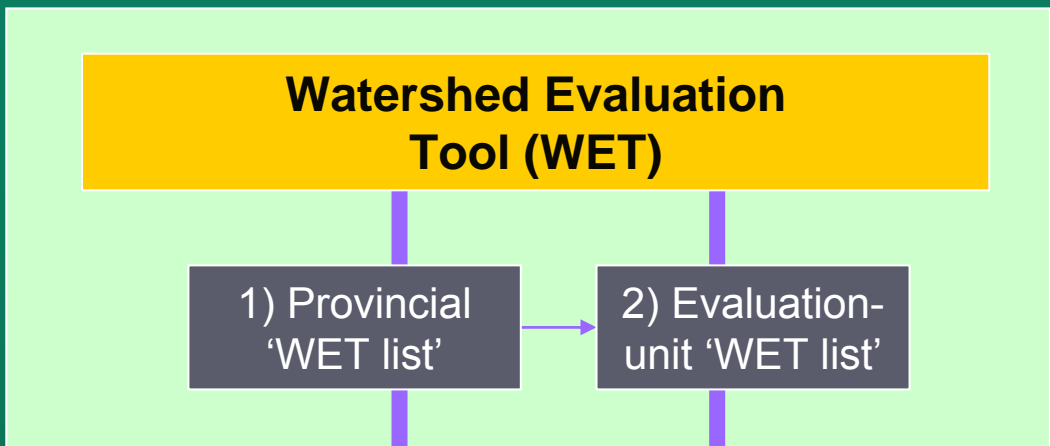
1. What are FSWs?
2. How are FSWs selected & designated?
3. How will FSWs be Monitored?

1. What are FSWs?

- ▶ A legal designation under FRPA's Government Action Regulation (s.14)
- ▶ GAR FSW tests:
 1. Significant fish values
 2. Significant sensitivity
 3. Benefit from special management
- ▶ Applies to Forest Act agreement holders operating on Crown forest and fee-simple TFL Sch "A" lands
- ▶ Includes (in some cases) community watersheds
- ▶ FSW order defines an area of land + establishes objectives (desired conditions)

1. What are FSWs?

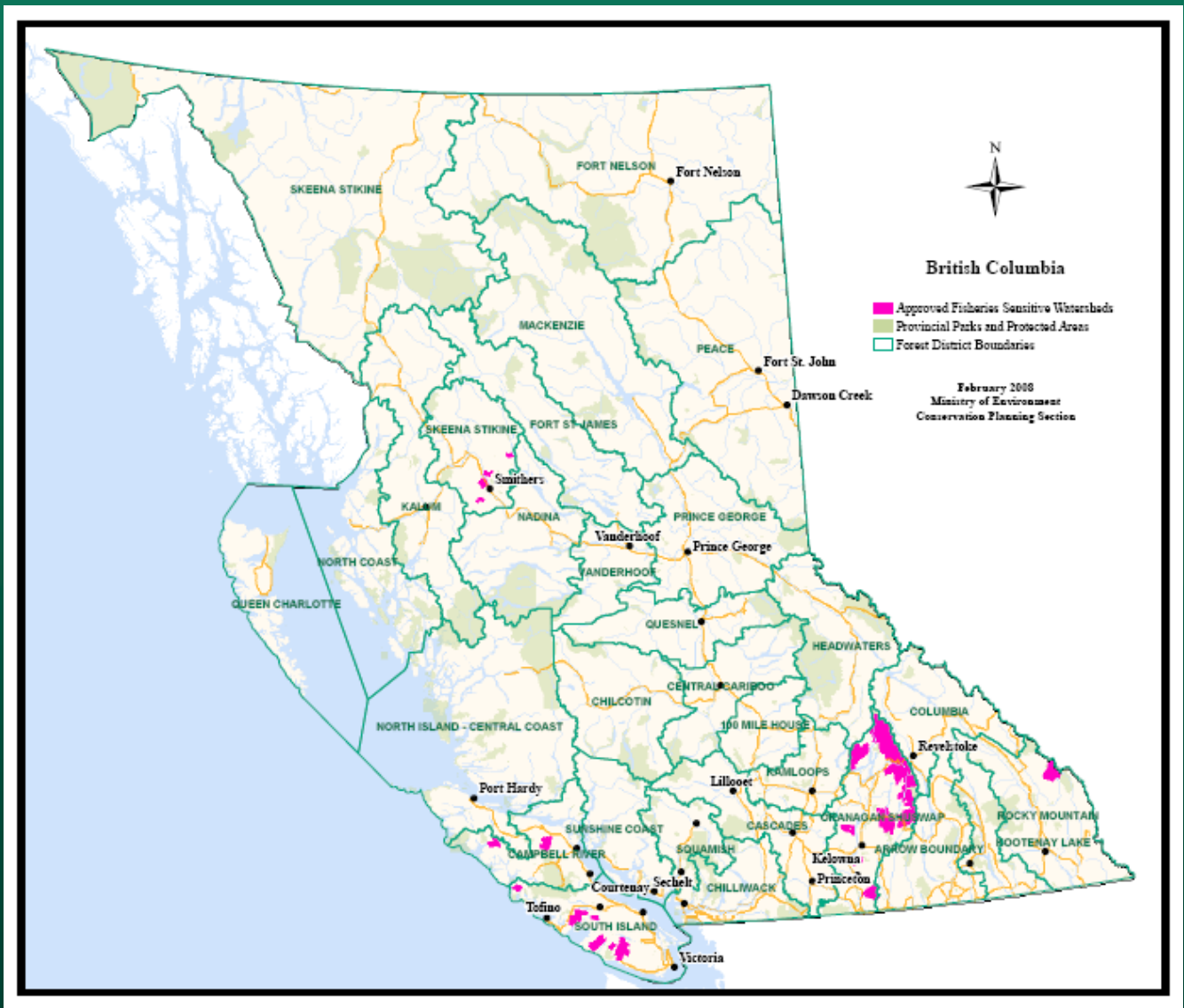
- ▶ Generic FSW objectives:
 1. Intended to conserve natural:
 - ▶ stream morphology and watershed dynamics critical to fish (i.e. fish habitat attributes), and
 - ▶ hydrological regime
 2. Application to entire watershed; prevention of "cumulative hydrological effects"



Does not meet FSW criteria:
Not recommended

Meets FSW criteria:
Recommend for FSW designation

2. How are FSWs selected & designated?



31 FSWs that have been designated to date

3. How will FSW be monitored?

- ▶ Project Charter
- ▶ Overriding (draft) FSW monitoring question:

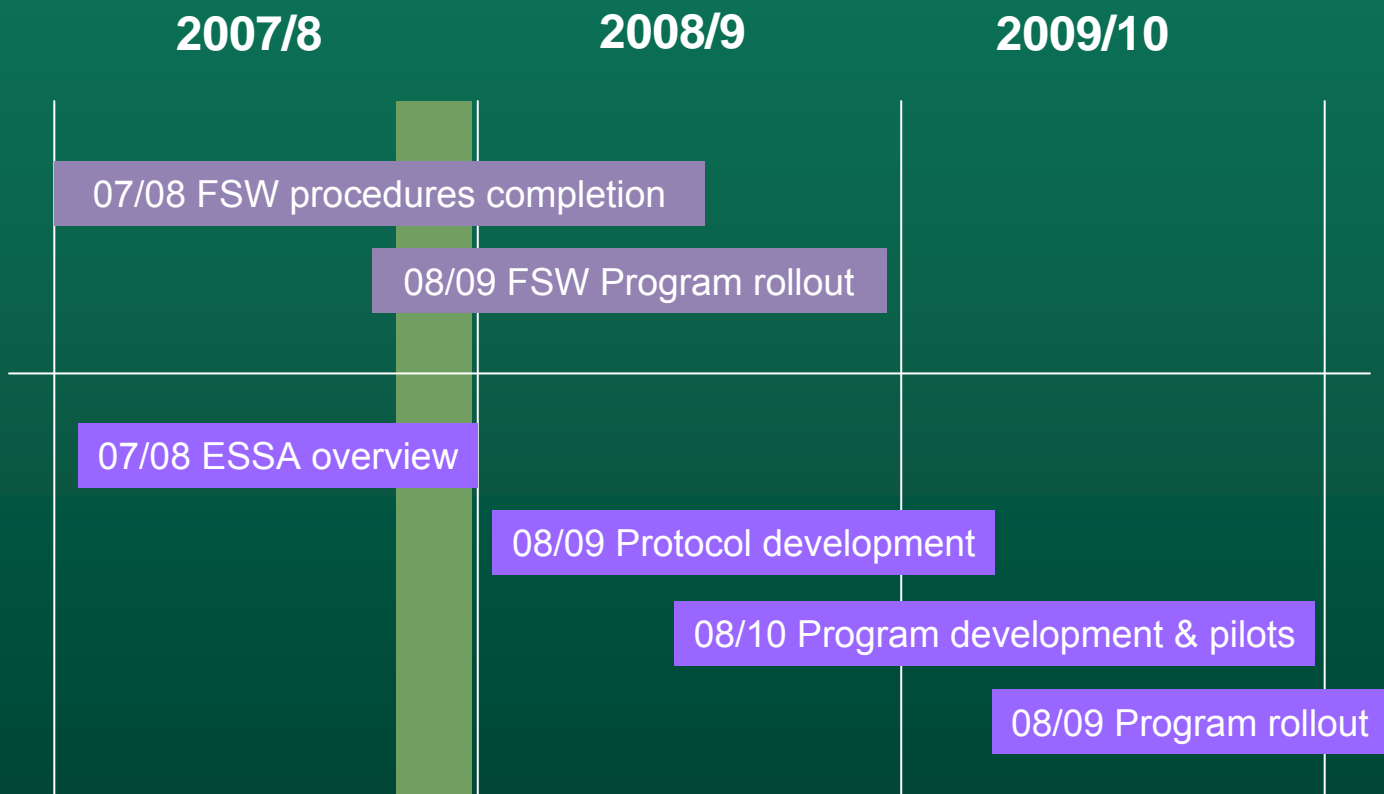
“Are designated fisheries sensitive watersheds conserving

i) fish habitat, and

ii) the natural function and processes required to maintain fish habitat values now and in the future?”

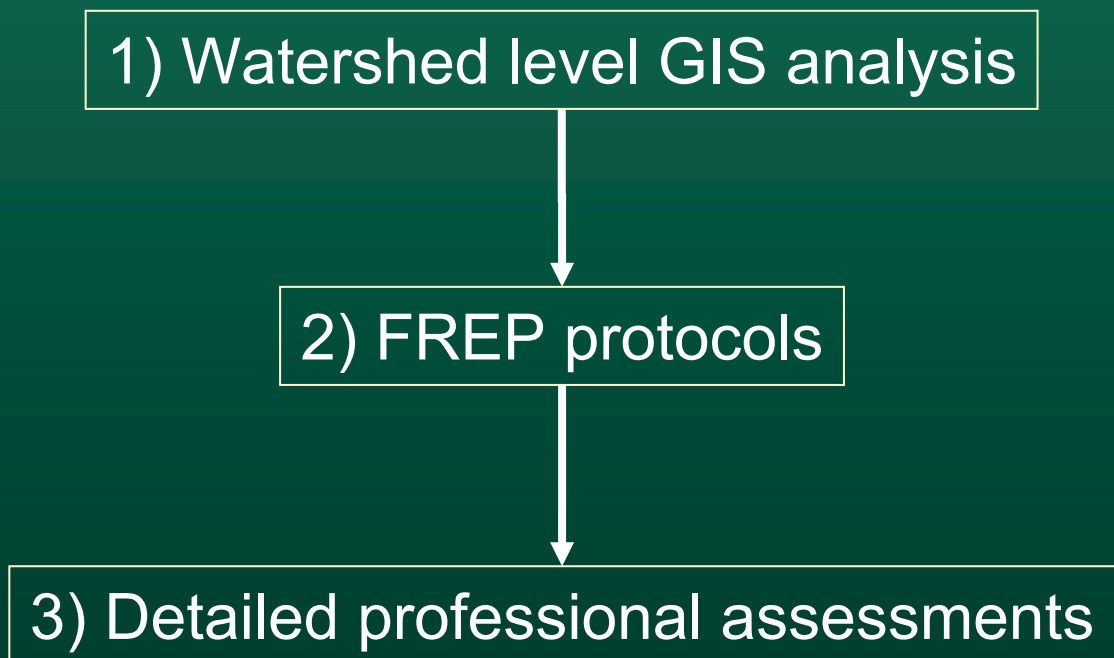
3. How will FSWs be monitored?

Program development timeline:



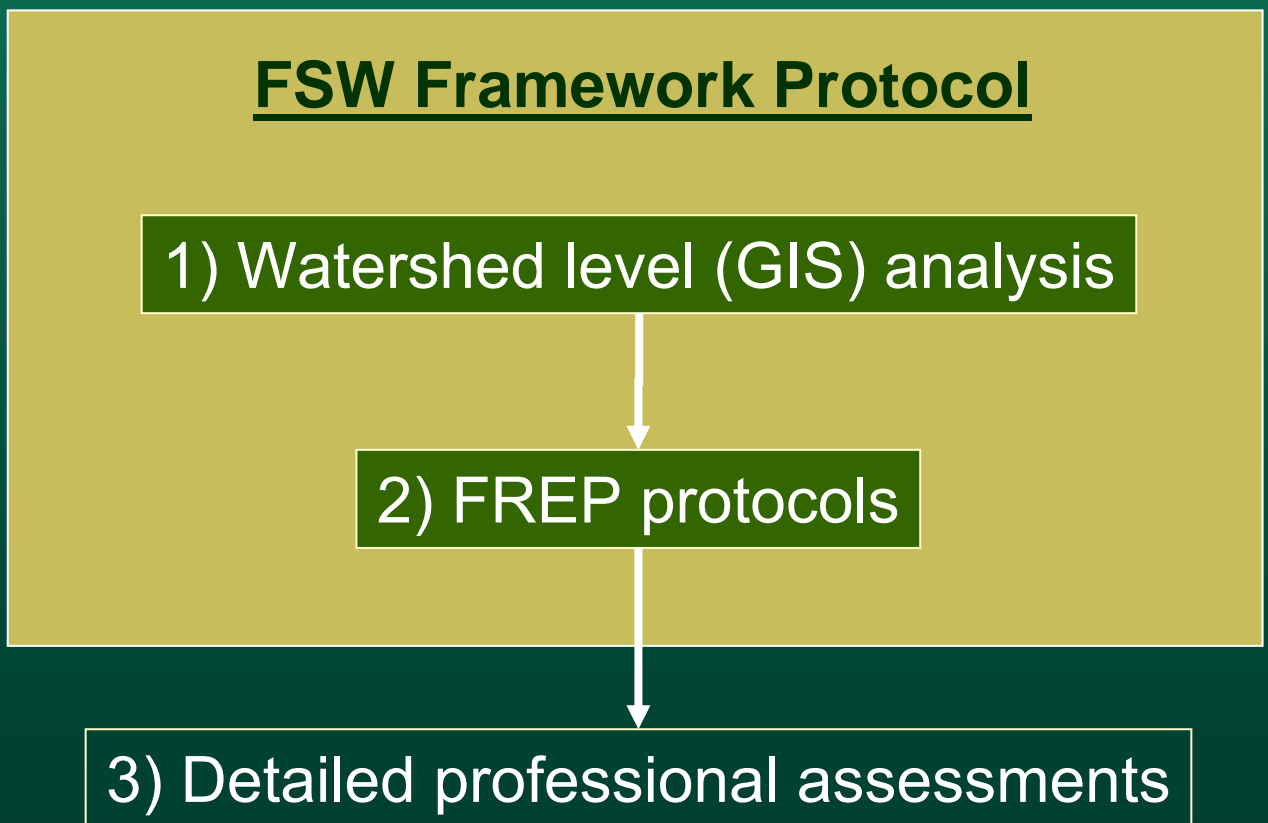
3. How with FSWs be monitored?

- ▶ Tiered methodology using predetermined benchmarks which, when reached, will trigger more detailed assessment



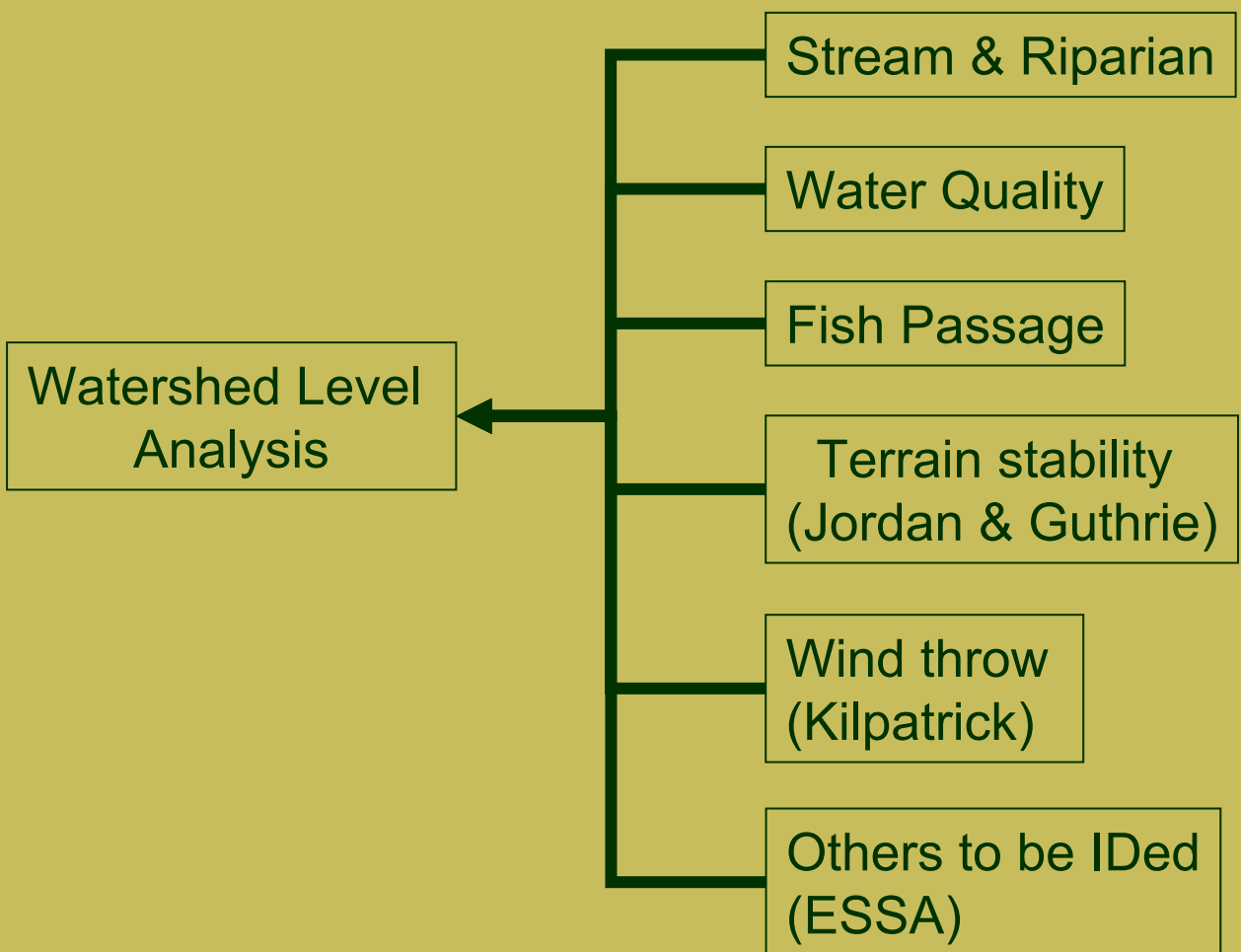
3. How with FSWs be monitored?

- ▶ FSW Framework protocol will involve study (statistical) design to address the first two tiers



3. How will FSWs be monitored?

FSW Framework Protocol



3. How with FSWs be monitored?

- ▶ Additional Monitoring Activities:
 - Retrospective analysis (e.g. remote sensing & other existing data)
 - Watershed Process Modeling
 - Experimental designs (e.g. paired watersheds)
 - Biological (e.g. escape trends over multiple watersheds for same species population – DFO Wild Salmon Policy)
- ▶ Will require additional research in some disciplines to improve the science

3. How will FSW be monitored?

- ▶ Contract let to ESSA Technologies:
 - Lit. review
 - Conceptual model
 - Maintain consistency with FREP model and protocols
 - ID gaps
 - Develop 08/09 work plan

3. How with FSWs be monitored?

- ▶ Clear benefits to FREP model:
 - Existing (already tested) protocols
 - Data management and analysis system in place (IMS)
 - Ongoing data collection inside and outside FSWs
 - QA standard

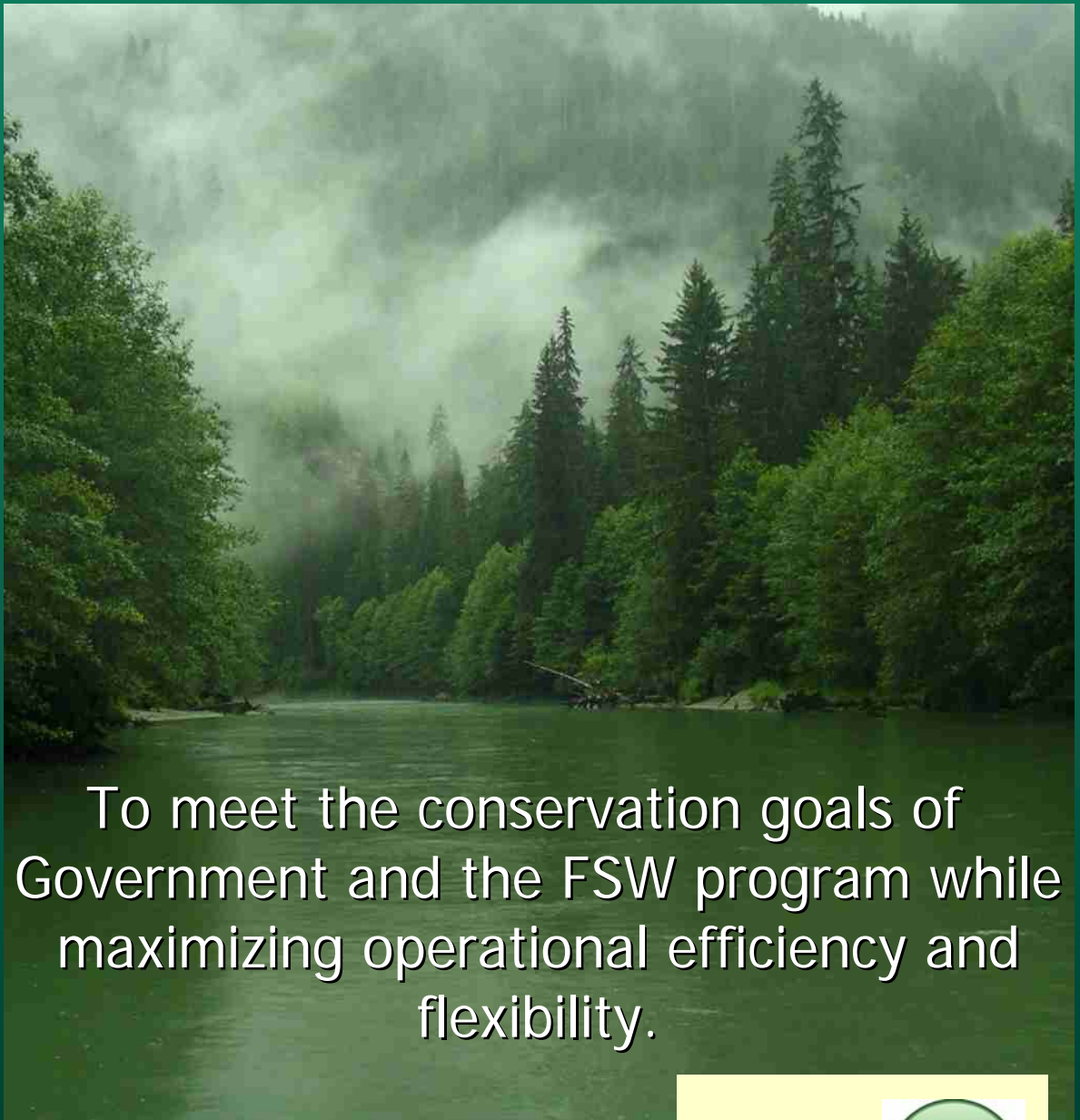


4. Key workshop messages

1. FSW monitoring program is in development
2. The FREP model will be the foundation on which the FSW monitoring program is built upon
3. FREP is already contributing to data collection
4. Expect to hear increasingly more over the next two years



The Challenge & Opportunity



To meet the conservation goals of Government and the FSW program while maximizing operational efficiency and flexibility.

