



Sustainable Forest Management Awareness Training

November 14, 2006

What is Sustainable Forest Management (SFM)?



- A process to deliver forest values in a way that does not compromise those values for future generations.
- **Goal:** "Maintain & enhance the long-term health of our forest ecosystems, for the benefit of all living things both nationally & globally, while providing environmental, economic, social & cultural opportunities for the benefit of present & future generations."

WHY SFM CERTIFICATION?

- Public / customer pressures
- Ensure market access
- Independent endorsement of forest practices
- Manage environmental risk



WHY SFM? cont....

Forest Products Customers' Demands

- Customers looking to demonstrate environmental responsibility
- Level of engagement depends on vulnerability to environmental campaigns and commitment to environmental image
- Typical wood procurement statements:
 - End sourcing from endangered forests
 - Promote sustainable forest management
 - Give preference to products from forests 3rd party certified to sustainable forest management standards
 - Most statements inclusive, some state a preference for a particular standard

Forest Products Association of Canada

- January 28, 2002 commitment by FPAC's Board of Directors
- “all member companies will be required to submit their forest management practices to the scrutiny of independent, 3rd party audits, and that successful certification - to one of three internationally-recognized standards - will be a condition of association membership in the future.”
- The three standards - CSA, FSC & SFI
- Deadline - end of 2006



Time Inc. Certification Requirements

Fibre from sustainably managed lands certified by a third party using a credible recognized performance standard

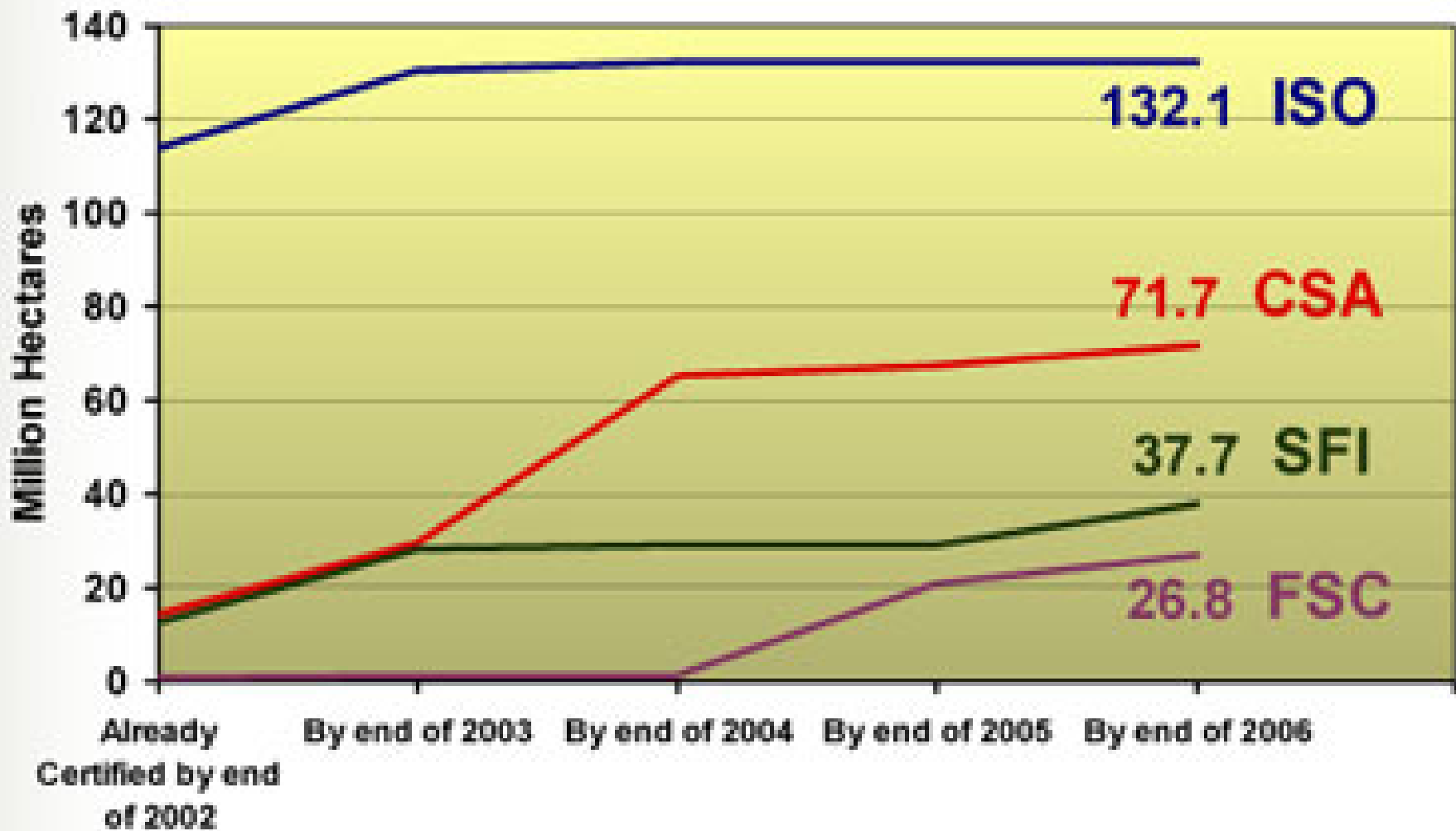
% of Required Certified Fibre

	US Integrated Mills	US Non-Integrated Mills and all European & Canadian Mills
Dec. 31, 2004	50%	65%
Dec. 31, 2005	65%	80%
Dec. 31, 2006	80%	80% +

Types of SFM Certifications

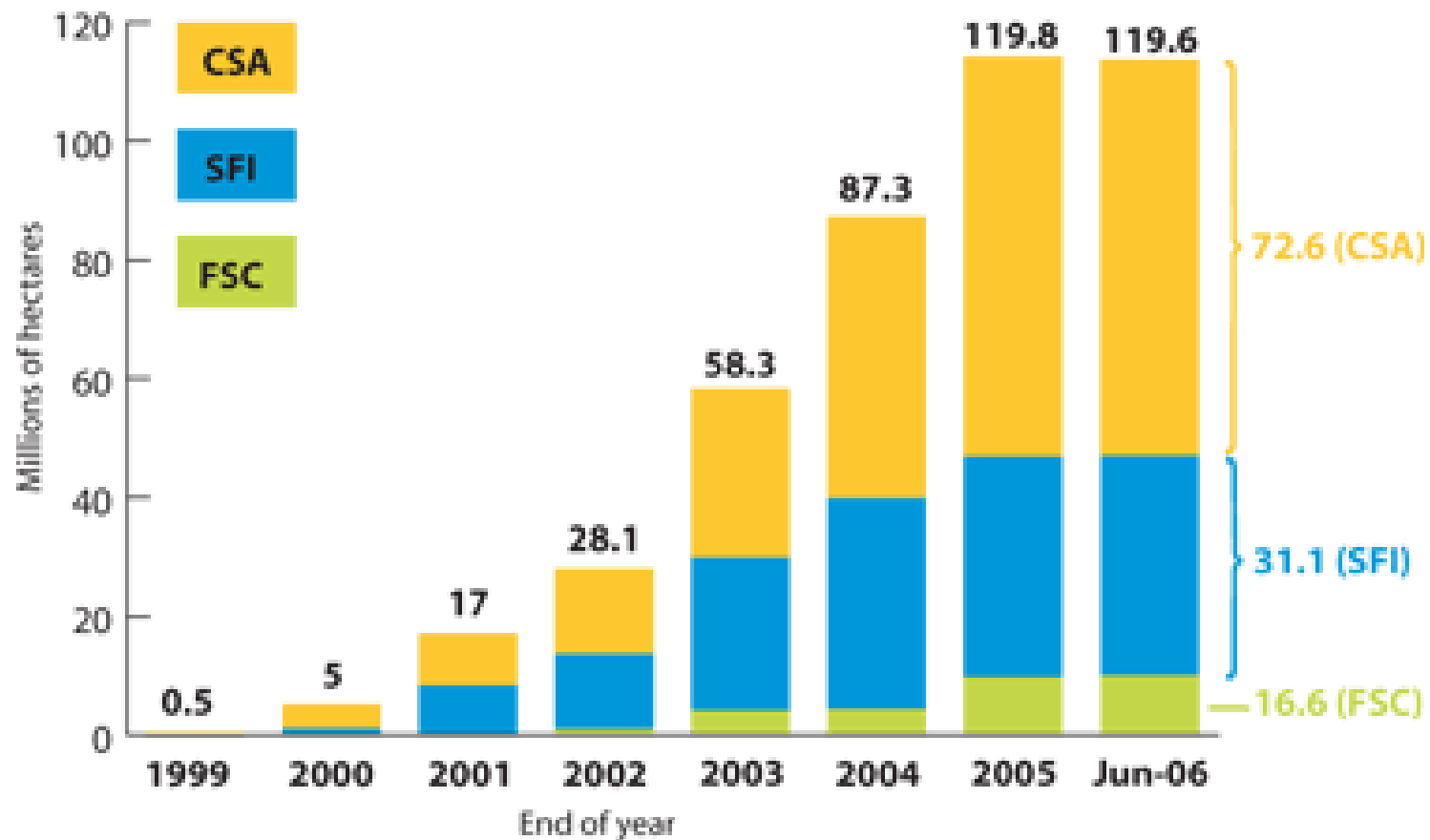
- **CSA Z809(2002)** – *describes how a sustainable forestry management plan (SFMP) should be developed, implemented, and maintained*
- **SFI** – *similar in scope and application to CSA Z809, American*
- **FSC** - *similar in scope and application to CSA Z809, International*

Certification Intentions in Canada (Current to 2006)

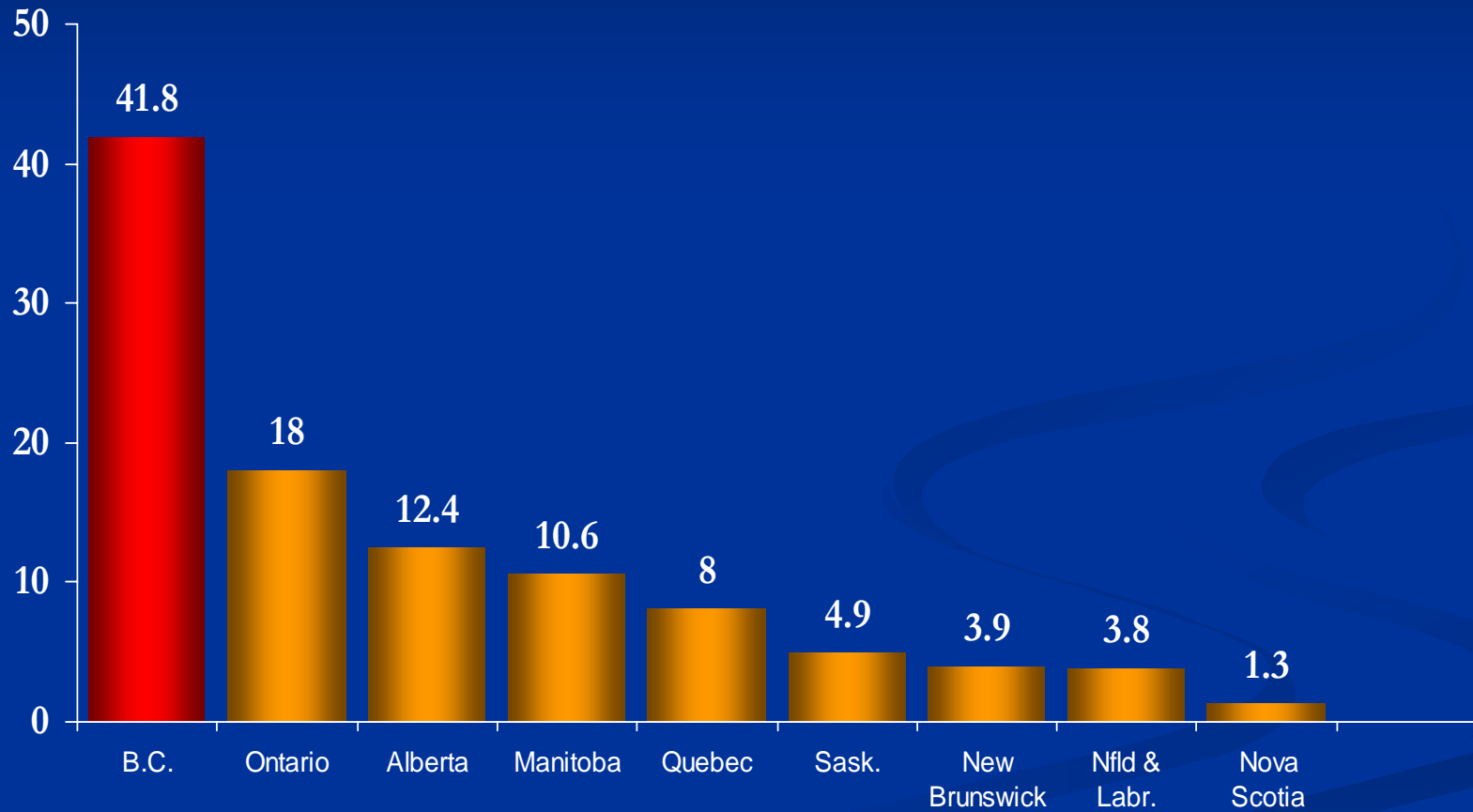


SFM Certification Growth in Canada – Year over Year

Source: Canadian Sustainable Forestry Certification Coalition



SFM CERTIFICATION BY PROVINCE: APRIL 2005 (MILLIONS OF HA)



CSA Z809 IN BC (23 MILLION HA+)

Current

- Abitibi
- Weyerhaeuser*
- Canfor*
- FS John Pilot Project
- Western F.P.
- Tolko Industries*
- L&M
- Apollo
- Lakeland
- Carrier Lumber
- Winton Global
- BCTS (TPG/TPL/TKA/etc.)

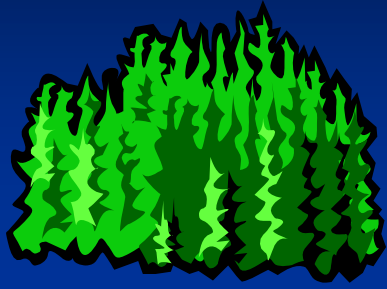
Future

- Tanizul Timber
- Ta Da Chun
- Stuart Lake Lumber
- Gilbert Smith
- Ainsworth
- Ardew
- BCTS (TSN !!!)

Chain of Custody or Traceability

- Chain of custody is the process of tracking products from their place of origin (the forest) through all stages of transfer and production to the final consumer as an end product
- Also referred to as traceability
- More and more customers want to know the pedigree of the products supplied
- % certified fibre, neutral fibre and recycled content
- Tracking is a challenge given the way wood flows throughout the industry

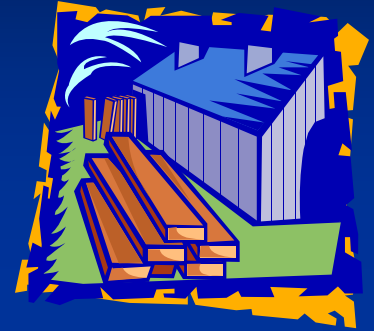
From the Forest to the End User



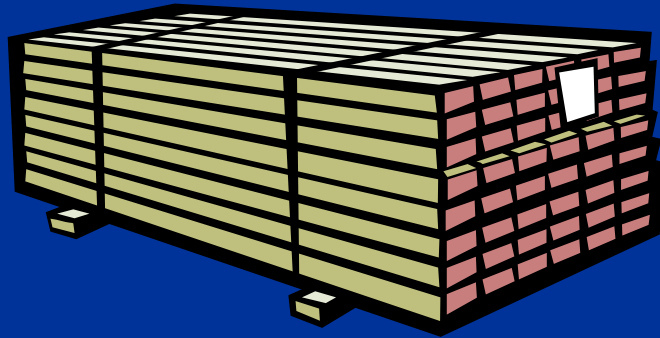
Certified Forest



Certified Logs



Mill



Retailer



Certified Lumber

Pan European Forest Certification Council

- Created in 1999 by European forest land owners as an umbrella organisation to provide a framework for the mutual recognition of credible national forest certification standards and as an alternative to FSC
- Now the **Programme for the Endorsement of Forest Certification** schemes (PEFC)
- Canada the first non-European nation to join
- CSA Standard was endorsed in March 2005
- Largest in the world with 192 million hectares



CSA Sustainable Forest Management Standard

- CSA SFM Standard based on a Canadian definition of sustainable forest management (SFM)
- Linked to intergovernmental processes for defining SFM
- CSA is both performance-based and system-based:
 - performance component based on Canadian Council of Forest Ministers (CCFM) Criteria and Indicators for sustainable forest management
 - systems component based on an environmental management system consistent with ISO 14001



CSA Sustainable Forest Management Standard

- Follows a long-established national standards development system, i.e. separation of standards and accreditation
- Requires certification of a Sustainable Forest Management (SFM) plan for the Defined Forest Area (DFA) which meets the standard
- Includes a substantial commitment to involve the public in developing the SFM plan:
 - Representation from a broad range of interested parties
 - Efforts to contact and encourage Aboriginal involvement
 - Recognize Aboriginal and treaty rights and agree that participation will not prejudice those rights
 - Operating rules agreed to by the participants

CCFM Criteria

- Conservation of Biological Diversity
- Maintenance and Enhancement of Forest Ecosystem Condition and Productivity
- Conservation of Soil and Water Resources
- Forest Ecosystem Contributions to Global Ecological Cycles
- Multiple Benefits to Society
- Accepting Society's Responsibility for Sustainable Development

CSA Certification Process

- Each of the 6 criterion contain a number of CSA SFM Elements
- 17 in total
- Required to be set for each CSA SFM Element are:
 - Values
 - Objectives
 - Indicators
 - Targets
 - Measures (VHOOF SFMP only)
- Public participation used to develop SFM plan
- Adaptive management is an important component of the SFM plan

CSA SFM Elements

- **1. Conservation of Biological Diversity**
 - 1.1 Ecosystem Diversity
 - 1.2 Species Diversity
 - 1.3 Genetic Diversity
 - 1.4 Protected Areas & Sites of Special Biological Significance
- **2. Forest Ecosystem Condition and Productivity**
 - 2.1 Forest Ecosystem Resilience
 - 2.2 Forest Ecosystem Productivity

CSA SFM Elements, cont'd

Conservation of Soil and Water Resources

3.1 Soil Quality and Quantity

3.2 Water Quality and Quantity

4. Forest Ecosystem Contributions to Global Ecological Cycles

4.1 Carbon Uptake and Storage

4.2 Forest Land Conversion

CSA SFM Elements, cont'd

Multiple Benefits to Society

- 5.1 Timber and Non-Timber Benefits
- 5.2 Communities and Sustainability
- 5.3 Fair Distribution of Benefits and Costs

6. Society's Responsibility for Sustainable Development

- 6.1 Aboriginal and Treaty Rights
- 6.2 Respect for Aboriginal Forest Values, Knowledge, and Uses
- 6.3 Public Participation
- 6.4 Information for Decision-Making

ROLES & RESPONSIBILITIES

An SFM Plan Example – Prince George (involves PG Timber Sales)

CCFM Criterion: Conservation of Biological
Diversity

CSA SFM Element: : Species Diversity

Value: Sustainable populations of flora and fauna
native to the DFA

Objective: Maintain habitat to support flora and
fauna native to the DFA

Business Process Example

– > Prince George Timber Sales

Indicator Statement

The percentage of forest operations consistent with riparian reserve requirements as identified in operational plans

Target: 100% of forest operations during the period April 01/05 to March 31/06 are consistent with riparian reserve requirements as identified in operational plans.

Variance

0%

SFM plan details the target, current status, forecast, monitoring procedure, time and strategy to meet target

TPG Business Process, Cont'd

- *Data Sources:*

GENUS Resources – # of forest operations conducted, on blocks with riparian zones (#RRZ), between April 01/05 & March 31/06

GENUS Environment – # of ITS entries (ITSE) resulting from non-conformances with riparian reserves in operational plans for operations conducted, on blocks with riparian reserve zones, between April 01/05 & March 31/06.

Responsibility for GENUS harvest & silviculture updates: _____

Deadline Date for GENUS harvest & silviculture updates: _____

Responsibility for entering SP data into GENUS Resources: _____

Responsibility for entering non-conformances into GENUS Environment:

TPG Business Process, Cont'd

- *Target Calculation:* $\frac{\#RRZ - ITSE}{\#RRZ} \times 100\%$
- *Performance Report and Evaluation:*
 - Reporting Period: April 1st. – March 31st. annually
 - Data Cut-Off Date: March 31st. annually
 - Proof: Check ___% of inspection checklists to verify entries in GENUS Environment. **(responsible: CSO)**
 - Run: Query Genus Resources database + CLL data for #RRZ **(responsible :_____)**
Query Genus Environment database for ITSE **(responsible: CSO)**
- Report: **(Responsible: _____)**
 - The #RRZ & ITSE
 - Target Calculation
 - Actual percentage of conformance to operational plans.
 - Current year's performance related to the target.
 - Recommendations to address any negative variance.
 - Any recommended changes to the target or process
- Submit: **Report to the SFM Leader by ___ (date) _____**

BCTS SUSTAINABLE RESOURCE MANAGEMENT POLICY

BC Timber Sales is committed to managing and administering forest management activities on our operations through effective measures that ensure *sustainable resource management*.

It is the policy of BC Timber Sales to:

- **Conduct** our forest management activities to comply with relevant legislation, regulations, policies and other requirements to which the organization subscribes;
- **Develop and maintain** a *Sustainable Forest Management (SFM)* system that is based on sound ecological, social, and economic values;
- **Provide** public participation opportunities to facilitate local input into forest management activities and plans.
- **Provide the opportunity** to First Nations to participate in the SFM process in a manner that respects their aboriginal and treaty rights;
- **Maintain a framework** that sets and reviews environmental and SFM objectives and targets, and promotes the prevention of pollution associated with our forest management activities;
- **Monitor, evaluate, and implement** appropriate changes to promote continual improvement of environmental and SFM practices;
- **Seek to advance our knowledge** of SFM science and technology and incorporate relevant measures into our overall planning process;
- **Promote a work environment** that protects the health and safety of staff, clients, and the public;
- **Communicate and make readily available** our Sustainable Resource Management Policy statements to staff, clients, First Nations, and the public.

Vanderhoof SFMP - Who is Involved?

Licenseses involved in the formulation of the Vanderhoof SFMP.

Why - Its more effective to work together! However different Companies have different business approaches.

Canfor
Lakeland
BCTS
L&M
BCTS (Lead Bruce Middleton)



Fort St. James SFMP

Who is currently Involved?

■ Canfor

- Lakeland
- BCTS (Lead-Jeremy Greenfield-FSJ with Dwayne Eastman)
- Tanizul Timber
- Carrier Lumber
- Apollo
- L&M
- Winton Global
- Ta Da Chun
- Stuart Lake Lumber
- Takla Track and Timber



How do you conform to SFM goals in the forest workplace ?

- Follow the Operational Plans
- Follow EMS requirements
 - Environmental Operating Procedures (internal)
 - Environmental Field Procedures (LPCs)
 - Emergency Response Procedures & Plans
 - Training requirements
- Follow Contract & License requirements
- Follow Legislative and Regulatory requirements

IMPORTANT SFM/EMS Resources

- Internal Certification Web Page:
 - http://www.for.gov.bc.ca/bcts/areas/TSN/TSN_ems-internal.htm
- External Certification Web Page:
 - http://www.for.gov.bc.ca/bcts/areas/TSN_certification.htm
- LAN Locations:
 - *G:\BCTS\Communications*
 - *G:\BCTS\!transfer\Forest Certification*
- TSN EMS Staff Guide
- TSN EMS Field Manual
- TSN EMS Field Booklet



In order to receive a
Stuart-Nechako BC Timber Sales
SFM Awareness Training Record,
please complete the following quiz and
submit your answers by mail to:

Kyla Pollard, CSO
P.O. Box 190
Vanderhoof, BC
V0J 3A0

Please provide your full name, company and mailing address.

SFM Awareness Training Quiz

- 1) List the 3 natural resource values that make up sustainable forest management.

1. _____
2. _____
3. _____

- 2) List 3 reasons why we have sustainable forest management certification.

1. _____
2. _____
3. _____

SFM Awareness Training Quiz

3) List the 3 different types of sustainable forest management certification standards.

1. _____
2. _____
3. _____

4) What sustainable forest management certification standard makes up the bulk of BC and Canadian wood products?

SFM Awareness Training Quiz

- 5) Briefly define Chain of Custody and why it is becoming increasingly important for forest industry companies.

- 6) List the 3 elemental components to CSAZ809 sustainable forest management certification. (hint: Slides 14&15)

1.

2.

3.

SFM Awareness Training Quiz

7) There are 6 CSAZ809 SFM Criterion. List 1. There are 17 associated elements. List the element related to the criterion you used. Define the CSA SFM Elements required to be set for the standard.

Criterion: _____

Element: _____

(VHOOF SFMP Only)

8) In order to ensure the ongoing maintenance of SFM certification, why are systems like EMS so important to have in place? Why is it important to identify Roles & Responsibilities in those systems relative to SFM?

SFM Awareness Training Quiz

- 9) List your current roles and responsibilities to ensure the ongoing maintenance of CSAZ809 sustainable forest management certification success.

- 10) List improvements that you think could be made to our current systems in place as a form of continuous improvement.

BCTS SRM POLICY

DO YOU KNOW WHERE
TO FIND IT?

BE FAMILIAR WITH IT !!!!!

SFM Awareness Training

**Do you have more
Questions?**

Contacts:

Kyla Pollard, CSO or BCTS

Planning Staff at (250)996-6363