



BCTS
BC Timber Sales
Skeena

Standard Operating Procedures HEAVY RAINFALL SHUTDOWN

January 2012

This standard operating procedure (SOP) outlines the procedures to be followed by all licensees and applicable contractors in order to evaluate the potential for a landslide at their work sites when operating within the Skeena Business Area. The Skeena Business Area is divided into three zones: interior, transitional and coastal. The attached map shows each zone, along with amount of rainfall in the 24-hour period that would trigger a shutdown. BCTS staff, licensees and contractors involved in the harvesting, road construction and road maintenance activities must be familiar with this SOP.

To evaluate the potential for a landslide at a given site, it is essential to know the amount of precipitation in a 24 hour period.

Licensees and contractors must track the amount of precipitation by recording the date, time and amount of rainfall accumulated in a 24 hour period measured at approximately the same time every day. Once recorded, empty the rain gauge and return it to its location. When there is no rainfall in a 24 hour period, record 0. The rain gauge should be located at the worksite and BCTS staff will provide you with a gauge.

The heavy rainfall shutdown thresholds for a 24 hour period in the three zones are as follows (see attached map for location):

Zone one 50 mm

Zone two 70 mm

Zone three 100 mm

Once triggered, the shutdown will remain in effect for 24 hours.

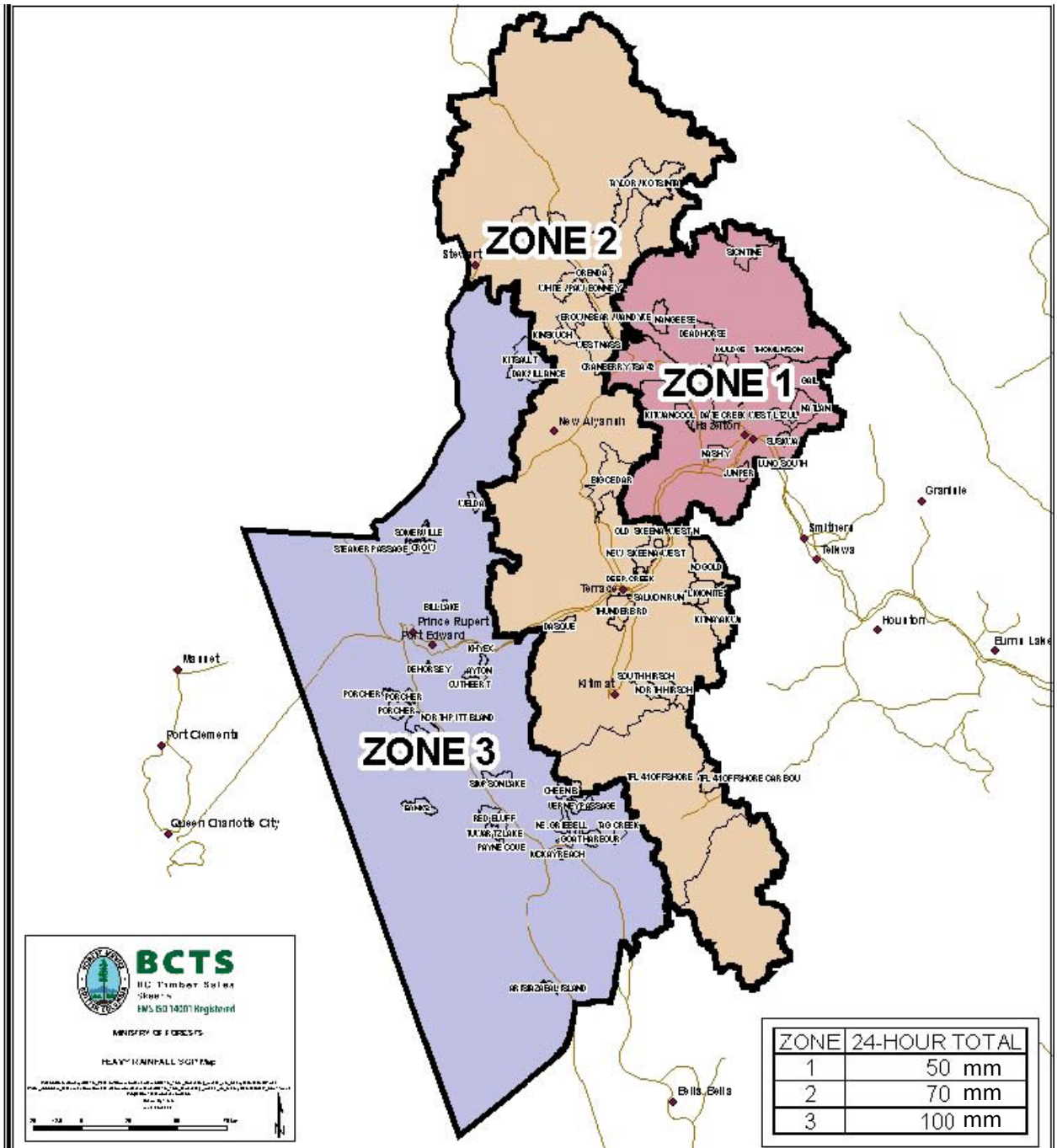
Record maintenance:

During the project the contractor or licensee will retain the rainfall record sheet and make it available upon request.

Once the project is complete the rainfall record sheet will be retained as follows:

For contracts: The contractor will turn over the rainfall record to the contract coordinator who will place it on the contract file.

For Timber Sale Licence Holders: Once the licence is closed the licensee may retain the rainfall record sheet.



Heavy Rainfall Shutdown Criteria by Operating Area