



# **SUSTAINABLE FOREST MANAGEMENT PLAN**

**for**

## **Sustainable Forestry Initiative (SFI) Certification**

**BC Timber Sales Okanagan-Columbia Business Area  
Columbia Forest District Operations**



**December 19, 2007**

---

# Table of Contents

<b>1</b>	<b>INTRODUCTION.....</b>	<b>3</b>
1.1	BACKGROUND AND CONTEXT .....	3
1.2	DEFINITION.....	4
1.3	OBJECTIVES, INDICATORS AND FOREST CERTIFICATION.....	4
1.4	TOC OPERATIONS.....	5
<b>2</b>	<b>ECOLOGICAL VALUES.....</b>	<b>6</b>
2.1	STRATEGIC PLANNING .....	6
2.2	OPERATIONAL / SITE LEVEL PLANNING.....	8
2.3	SPECIES AT RISK.....	9
2.4	OPERATIONAL PRACTICES.....	10
2.4.1	Harvesting and Road Activities .....	10
2.4.2	Silviculture Activities.....	11
<b>3</b>	<b>COMMUNITY AND SOCIAL VALUES.....</b>	<b>13</b>
3.1	FIRST NATIONS.....	13
3.2	EDUCATION AND OUTREACH .....	14
3.3	RECREATION .....	15
3.4	PUBLIC INPUT INTO PLANNING PROCESSES .....	16
<b>4</b>	<b>RESEARCH AND DEVELOPMENT .....</b>	<b>17</b>
<b>5</b>	<b>WOOD PURCHASE .....</b>	<b>19</b>
<b>6</b>	<b>EXTERNAL INITIATIVES .....</b>	<b>20</b>
6.1	WESTERN CANADIAN SFI IMPLEMENTATION COMMITTEE .....	20
6.2	MINISTRY OF FORESTS AND RANGE, OPERATIONS DIVISION .....	21
<b>7</b>	<b>MONITORING AND REPORTING .....</b>	<b>23</b>
7.1	COMPLIANCE MONITORING.....	23
7.2	SFM MONITORING AND REPORTING .....	24
7.3	MANAGEMENT REVIEW .....	24
<b>8</b>	<b>INTEGRATION WITH EMS.....</b>	<b>25</b>
<b>9</b>	<b>SFMP APPROVAL .....</b>	<b>26</b>

Appendix A: Chart of Operating Areas

Appendix B: Sustainable Forest Management Policy

*Cover Photo: Goodfellow FDU, Mike Pirnke*

# 1 Introduction

BC Timber Sales Okanagan-Columbia Business Area (TOC) has developed this Sustainable Forest Management Plan (SFMP) to describe how their forest practices address aspects of sustainability encompassing environmental, economic and social dimensions.

## 1.1 Background and Context

In British Columbia, approximately 90% of commercial timber production is carried out on Crown Land. Forest planning on Crown land therefore involves regulators, resource professionals and the public. Processes such as land and resource management plans and local plans bring together interest groups to identify forest values and management objectives for a designated area. Based on these findings, participants develop broad statements of management direction and, eventually, a land-use proposal or options for the area. The land-use proposal or options are then referred to various agencies for analysis.

Six statutes form the legal framework for forest management on Crown lands in British Columbia: *the Forest Act*, *the Forest Practices Code of British Columbia Act*, *the Ministry of the Forests Act*, *the Forest and Range Practices Act (FRPA)*, *the Wildfire Act* and *the Foresters Act*. Numerous other provincial and federal acts, regulations, guidelines and policies also have implications for forestry operations on Crown lands.

BC Timber Sales offices issue timber sale licences to successful bidders under the authority of *the Forest Act*. The allowable annual cut (AAC) of each timber supply area (TSA) is determined by the provincial chief forester, at least once every 5 years, under authority of Section 8 of *the Forest Act*. The AAC allocated to BC Timber Sales in the Columbia Forest District is 215,700 m<sup>3</sup>.

FRPA and its regulations in particular set the requirements for planning, road building, logging, reforestation, and grazing. FRPA prescribes levels of protection for forest values including watersheds and wildlife habitat, and defines planning processes. BC Timber Sales is required to develop a Forest Stewardship Plan (FSP) to meet the requirements of FRPA.

FRPA took effect on Jan. 31, 2004. Any activities already approved under the pre-existing Forest Practices Code were grandfathered and are governed by the *Forest Practices Code of British Columbia Act* and its regulations. Once transition is complete, all forest licensees will operate only under FRPA, and previous plans such as the Forest Development Plan (FDP) will be replaced by plans developed under FRPA and the FSP.

This SFMP describes how TOC will achieve the broad objectives of higher level plans developed under public involvement processes such as the Revelstoke and Kootenay-Boundary Land Use Planning Processes. It also guides the development and content of other planning documents including the FSP. The SFMP reflects the bounds established by higher level plans and through the regulatory framework described above. TOC will ensure that all lower-level plans it is responsible for developing (e.g.: the FSP, and all site level plans) are consistent with the commitments made in this SFMP.

## 1.2 Definition

This SFMP is consistent with the BC Ministry of Forests and Range annual report “The State of British Columbia’s Forests” in using the vision statement in Canada’s National Forest Strategy as its definition of sustainable forest management (SFM):

*The long-term health of Canada’s forest will be maintained and enhanced, for the benefit of all living things, and for the social, cultural, environmental and economic well-being of all Canadians now and in the future.*

— National Forest Strategy Coalition, National Forest Strategy, 2003–2008

Additionally this SFMP aligns with BCTS corporate vision outlined in our 2007/08 – 2009/10 Service Plan

*Our Vision is to be an effective timber marketer generating wealth through sustainable resource management*

## 1.3 Objectives, Indicators and Forest Certification

Government agencies, scientific and non-governmental organizations, and various certification bodies have defined high-level objectives and/or criteria to be considered in the practice of sustainable forest management. Underneath these objectives, practitioners of SFM use grouped sets of indicators to measure or describe each aspect of sustainability. These indicators provide measures of performance or progress towards attainment of the objectives.

This SFMP has adopted objectives and indicators for sustainable forest management that are consistent with those defined in the Sustainable Forestry Initiative® (SFI) program. The SFI program provides a system of thirteen objectives, supported by a set of 34 performance measures and over 100 indicators that encompass ecological, social, and economic dimensions of forest management. This SFMP has grouped the performance measures and indicators by values and like topics that align with the thirteen objectives. The SFMP outlines TOC commitments, provides a discussion of the current status, and describes the supporting information and records related to the values and topics.

TOC’s implementation of the SFI performance measures and indicators is specifically outlined in the *SFI Implementation Matrix*, attached. Issues / actions plans, roles and responsibilities, and TOC progress in achieving the performance measures and indicators, are outlined within this document.

The SFI Program is overseen by the Sustainable Forestry Board (SFB) an independent board that is responsible for maintaining and enhancing the SFI Standard and verification procedures. The SFB has members who come from environmental/conservation organizations, regulatory agencies, professional/academic groups, logging professionals, non-industrial landowners and the American Forest and Paper Association (AF&PA).

## **1.4 TOC Operations**

BC Timber Sales was established in 2003 as part of the B.C. Forest Service and manages 20% of the provincial Crown allowable annual cut or approximately 16 million cubic metres of timber by 2007. BC Timber Sales has a commercial orientation and we aim to optimize financial return to the Province.

BC Timber Sales is committed to: Employees, Communities, Customers, Safety, Forest Sustainability, Communication and Transparency, and Fiscal Management. BCTS is part of the BC provincial government and therefore, must follow BC government policies. The Personnel Policy Manual of the Public Service Agency, the Constitution Act of Canada, the Freedom of Information and Protection of Privacy Act, the current collective agreements, the Labour Relations Code and BCTS certification as a Safe Company address social laws, including those covering civil rights, equal employment opportunities, antidiscrimination and ant harassment measures, workers' compensation, indigenous peoples' rights, workers and communities' right to know, prevailing wages, workers' right to organize, and occupational health and safety. In addition, the TOC / DOS Human Resources Strategic Plan addresses priority HR issues at the local level.

The Okanagan-Columbia Business Area (TOC) of BC Timber Sales geographically encompasses the Okanagan-Shuswap and Columbia Forest Districts. The administrative and management centre for the business area is the Timber Sales Office (TSO) located in Vernon. A field team is located in Revelstoke. See Appendix A for chart of operating areas.

This SFMP applies to only those forest management operations conducted by TOC and our licensees, permittees and contractors (LPCs) in the Columbia Forest District including all planning and operational activities.

### **SFM Policy and Commitments**

TOC is committed to compliance with the SFI Standard, and to communication of the SFM Standard and commitments throughout the organization. TOC will also obtain certification of this SFMP and operations to the SFI standard by an independent third party. TOC will implement and achieve the nine Principles of Sustainable Forestry outlined in the SFI standard.

TOC has developed policies that describe other commitments relevant to SFM, including the TOC Columbia Forest District *Sustainable Forest Management Policy* (Appendix B).

## 2 Ecological Values

Ecological values are addressed by Regulation and in the Revelstoke and Kootenay-Boundary Higher Level Plan Orders (RHLPO & KBHLPO) and their variances, prepared by statutory decision-makers, which prevail over all other plans. TOC prepares operational plans such as the Forest Stewardship Plan (FSP) and retains supporting documents. Cutblocks and roads approved under authority of a Forest Development Plan (FDP), prior to the effective date of the FSP, have been transitioned under Section 196 of FRPA. At the block and road level, a Site Plan (SP) is prepared which includes an area summary, standards units requirements and stocking requirements. In addition, species at risk are given consideration in the planning processes described in Section 2.1 to 2.3. Section 2.4 describes how these planning considerations are implemented at the operational level.

### 2.1 Strategic Planning

<b>SFI Performance Measures and Indicators</b>
PM 1.1, Ind. 1 PM 4.1, Ind. 1, 5, 6, 7, 8 PM 4.2, Ind. 2 PM 5.1, Ind. 1 PM 5.2, Ind. 1 PM 5.3, Ind. 1-3 PM 6.1, Ind. 1, 2 PM 12.1, Ind. 5 PM 12.3, Ind. 1, 2
<b>Commitment</b>
TOC will ensure that their operational plans (FSP) are consistent with objectives set by government and all higher level planning objectives within the operating area. Operational plans will identify, consider and appropriately manage a broad range of ecological values within the operating area. BCTS will also consider and influence, where possible, the management of these values within the larger region / landscape. In doing so, TOC will conform to applicable regulatory and regional planning requirements.
<b>Current Status</b>
The strategic planning practices of TOC are regulated through the BC <i>Forest and Range Practices Act</i> (FRPA), <i>Government Actions Regulation</i> (GAR) orders, and applicable higher level plans.  Under FRPA and the <i>Forest Planning and Practices Regulation</i> (FPPR), objectives are established for: <ul style="list-style-type: none"> <li>• soils;</li> <li>• timber;</li> <li>• wildlife;</li> <li>• water; fish wildlife and biodiversity in riparian areas;</li> </ul>

- fish habitat in fisheries sensitive watersheds;
- water in community watersheds;
- wildlife and biodiversity- landscape level;
- wildlife and biodiversity - stand level;
- visual quality; and
- cultural heritage resources.

Objectives set by government for recreation sites and recreation trails and interpretive sites established under the FPC, and specified lakes less than 5 hectares in size that have been designated as L1 by the District Manager within the Columbia Forest District, have been grandparented under FRPA Sec.181.

Notices for indicators of the amount, distribution and attributes of wildlife habitat required for the winter survival of ungulate species in the Golden and Revelstoke Timber Supply Areas have been given under Section 7(2) of the FPPR.

Ungulate Winter Range for the Revelstoke TSA and TFL 23, and Scenic Areas and Visual Quality Objectives for the portion of the Columbia Forest District south of Revelstoke and west of the Upper Arrow Reservoir have been established under GAR Order.

Other commitments such as the Revelstoke and Kootenay-Boundary Higher Level Plan Orders (RHLPO & KBHLPO) address aspects such as:

- Biodiversity Emphasis
- Old and Mature Forest
- Caribou
- Green-up
- Grizzly Bear Habitat and Connectivity Corridors
- Consumptive Use Streams
- Enhanced Resource Development Zones – Timber
- Fire-Maintained Ecosystems
- Visuals; and
- Social and Economic Stability

These objectives are provided at a broad scale and are expanded upon at the landscape unit level in the FSP. Where appropriate, these activities are coordinated with other licensees, stakeholders and interest groups. The FSP development process also incorporates reviews and input from the public and interested parties.

TOC conducts all planning activities in conformance with the FSP.

#### **Supporting Information and Records**

The FSP and all supporting development and consultation documentation, such as ungulate winter range analyses, are retained by staff in the FSP files at the timber sales and or field team offices.

## 2.2 Operational / Site Level Planning

<b>SFI Performance Measures and Indicators</b>
PM 2.1, Ind. 1, 3, 5 PM 2.3, Ind. 1, 2, 5, 6, 7 PM 2.4, Ind. 1, 2, 3 PM 3.2, Ind. 1, 2, 3, 4 PM 4.1, Ind. 4 PM 5.1, Ind. 2 PM 5.2, Ind. 2
<b>Commitment</b>
TOC will ensure that all regulatory requirements, objectives, and practices of the higher level plans are implemented operationally through the FSP down to the SPs. TOC will also ensure that operational plans, licenses, permits and contracts will be used to manage environmental concerns.
<b>Current Status</b>
a) Site Plans  Site Plans are developed for all operational activities under the signature of registered professionals. Site Plans provide site-specific direction and management practices for issues relevant to each block or road including:  A. Tenure identification (location, area, general description) B. Area Summary (break down of the gross area, reserves, NAR, etc.) C. Stocking Requirements and Soil Disturbance D. Results or Strategies (if applicable)  Site Plan Maps include the locations of roads and boundaries, WTPs, riparian features, area summary, etc.  b) Harvest Plan Maps  Harvest Plan Maps provide additional site-specific information for each block such as site and treatment description data, deflection lines, slope %, etc.
<b>Supporting Information and Records</b>
Site Plans, Harvest Plan Maps and supporting materials are retained in Block and Road Permit files, and Genus.



Mountain Caribou

*Photo: BC Ministry of Environment and the BC Snowmobile Federation.*

## 2.3 Species at Risk

<b>SFI Performance Measures and Indicators</b>
PM 4.1, Ind. 2, 3 PM 4.2 Ind. 1
<b>Commitment</b>
TOC is to develop, maintain and expand a program for the identification and protection of species at risk (SAR).
<b>Current Status</b>
<p>TOC has developed management practices to ensure necessary protection of terrestrial animals, plants and ecological communities at risk as identified and managed for by TOC. These practices include:</p> <ul style="list-style-type: none"> <li>• The use of best-available information to identify and list species at risk of relevance to TOC, including the development of a SAR species log and field guide,</li> <li>• Development TOC Planning Route Cards and Species at Risk Block Info Sheets which identify SAR relevant to, and may be encountered within, TOC planned cutblocks,</li> <li>• Adoption of provincially developed management strategies for species at risk of relevance to the operating area, including the designation of Wildlife Habitat Areas (WHA), objectives for wildlife habitat areas, and implementation of general wildlife measures (GWMs) within the WHA's, or through other management practices specified in strategic or landscape level plans,</li> <li>• Development of training and identification materials (TOC SAR identification materials, use of web sites such as E-Flora BC, etc.) for staff, contractors, and others to implement the management practices and to enable the identification of species at risk at the operational level including training sessions,</li> <li>• The use of maps and associated planning and management practices identified within the Revelstoke and Kootenay Boundary Higher Level Plan Orders (RHLPO &amp; KBHLPO) for selected species that are threatened or of special concern (Grizzly Bear and Mountain Caribou),</li> <li>• Participation in the Provincial Species at Risk Coordination Office (SARCO) Mountain Caribou Recovery Strategy process, including the deferral of proposed harvesting within Mountain Caribou habitat areas until government provides further direction,</li> <li>• Assist regulatory agencies in the continuation of the process of completing inventories on those legally defined species at risk that are not currently inventoried or managed via COSEWIC, Wildlife Act, Identified Wildlife Management Strategy (IWMS), CDC, the</li> </ul>

- RHLPO, the KBHLPO, WHA's, or other government led species at risk initiatives, Assist regulatory agencies, if needed, in the continuation of the process of completing inventories on those non-legal species at risk that are identified and ranked in British Columbia by the Conservation Data Centre (CDC). This would include risk groups of red and blue listed species.

**Supporting Information and Records**

The FSP identifies critical habitat and management practices currently in place for selected species at risk. Management Strategies currently in place for species at risk and are located in BCTS files including SAR listings for TOC.

## 2.4 Operational Practices

Operational practices include the activities conducted by TOC LPCs in the woods from preparation for harvesting to the successful regeneration of the forest. For the purposes of this SFMP, the operational practices have been divided into Harvesting and Road Activities, and Silviculture Activities.

### 2.4.1 Harvesting and Road Activities

**SFI Performance Measures and Indicators**

PM 2.1, Ind. 4  
 PM 2.3, Ind. 3, 4  
 PM 3.1, Ind. 1, 2, 3  
 PM 7.1, Ind. 1

**Commitment**

TOC will exercise operational controls and follow best management practices during its harvesting and road building activities to achieve the objectives of this SFMP and to comply with federal and provincial regulatory requirements.

**Current Status**

TOC has developed and implemented an Environmental Management System (EMS) to achieve compliance with regulatory requirements and to address elements of its activities which can interact with the environment in such a way as to have the potential for significant environmental impact.

The adherence of LPCs to the SP, licenses, permits and contract documents is assessed and administered through measures, including:

- Field marking cut block, road and WTP boundaries, and training of workers;
- Contract provisions with all LPCs to conform to regulatory requirements and to requirements of the EMS;
- Inspections are conducted by TOC project supervisors and self inspections by LPC supervisors on a regular basis of the work being conducted by the LPC, for conformance to the SP, license, permit and contract requirements and compliance to relevant regulatory requirements;
- Initiation of corrective or preventive actions to address any areas of potential non-conformance or non-compliance with the SP, license, permit and contract or regulatory

requirements;

- Auditing of the practices of TOC and LPCs for conformance to the EMS requirements, including adherence to the license, permit and contract and for compliance to relevant regulatory requirements;
- Progress and post-harvest assessments of utilization, disturbance levels, and other objectives incorporated into the SP, licenses, permits and contract documents.

TOC has developed clear “stop work” requirements, instructing its clients and workers to cease work and contact their project supervisor or the BCTS representative in the event that they are:

- Uncertain of the project plan, your responsibilities or hazardous/sensitive areas;
- A previously unidentified cultural or resource feature, value or sensitive area is found;
- Where unfavorable weather or site conditions that could cause environmental damage are experienced;
- Where the proposed project plan will not work to achieve the desired outcomes.

#### **Supporting Information and Records**

See the EMS documentation, including Environmental Operating Procedures and Environmental Field Procedures and related pre-work/inspection checklists.

### **2.4.2 Silviculture Activities**

#### **SFI Performance Measures and Indicators**

PM 2.1, Ind. 2  
PM 2.2, Ind. 1-6  
PM 2.5, Ind. 1  
PM 11.1, Ind. 4  
PM 3.2, Ind. 1 and 3

#### **Commitment**

TOC will establish free-growing stands on those areas that they harvest, in a manner that is consistent with provincial regulatory standards and the FSP.

#### **Current Status**

Silviculture activity conducted by TOC in the operating area is governed by provincial legislation and standards, developed by the chief forester under the *B.C. Forest and Range Practices Act*. Additionally older pre-FSP blocks are governed under the *Forest Practices Code of British Columbia Act*. These standards specify reforestation requirements that include, tree gene resources, seed registration transfer and storage, parent trees. Stocking standards are specified in the SP.

TOC makes the commitment to meet these standards in their FSP, together with the commitment to establish a free-growing stand on those areas that they have been harvested under tenures issued by TOC. This is achieved by the implementation of a silviculture program that includes:

- Selection of tree gene resources under the Chief Forester’s Standards for Seed Use;
- Site preparation to create a favourable seedbed and to reduce fire hazard, if needed;
- Compliance with approved stocking standards to ensure that seedlings are compatible

with site;

- Planting practices that are consistent with provincial guidelines and current industry practice;
- Stand tending as necessary to meet free-growing objectives;
- A minimum of one survey or assessment of regeneration plus one assessment to confirm free-growing status - additional surveys and assessment may be conducted as necessary;
- Corrective actions to improve regeneration performance are taken by BCTS based on the results of the surveys / assessments, until free-growing status is achieved.

TOC has developed an Integrated Pest Management Plan (IPMP), which provides the framework for the implementation of integrated pest management (IPM) strategies and to ensure pesticides are only used in the context of an IPM program.

All operational activities involved in the silviculture program (e.g.: for site preparation, planting, stand tending) are subject to the same operational controls that the harvesting and road building programs are subject to, under the company's EMS. These include pre-works, EFP's, inspections and audits.

All operational activities will minimize impacts on water quality through adherence to the soil disturbance standards within the site plan.

#### **Supporting Information and Records**

Data regarding stocking standards, seed rules, results of assessments, corrective actions for regeneration performance, and free-growing status is retained in the Genus database and block file.

### 3 Community and Social Values

TOC addresses community and social values with First Nations initiatives, education and outreach and recreation programs.

#### 3.1 First Nations

<b>SFI Performance Measures and Indicators</b>
PM 6.1, Ind. 1 PM 12.4, Ind. 1
<b>Commitment</b>
TOC is committed to establishing effective communications with First Nations along with our requirement for consultation. TOC will ensure all proposed timber harvesting and road construction is communicated to First Nations to the extent desired by First Nations to develop an understanding of traditional forest uses and special areas requiring protection.
<b>Current Status</b>
<p>For the purposes of this section, “cultural heritage resource” refers to those resources that are the focus of a traditional use by an aboriginal people that is of continuing importance to those people, and not regulated under the <i>Heritage Conservation Act</i>.</p> <p>Proposed harvesting and road construction in areas of moderate and/or high archeological potential are examined further through an Archaeological Impact Assessment to further evaluate the potential of the proposed area and to identify any specific features that maybe located in the proposed harvesting and/or road construction areas. Identified areas will be excluded from proposed operations and/or protected with buffers.</p> <p><b>Further TOC is committed to:</b></p> <p>A) When the timber sales manager plans or designs harvesting or road construction that may potentially affect a cultural heritage resource of a First Nation, the TSM will make a reasonable effort<sup>1</sup> to gain information regarding the cultural heritage resources from the appropriate First Nation and from other sources as deemed necessary.</p> <p>B) If the timber sales manager becomes aware<sup>2</sup> of a cultural heritage resource in the location of a planned license, permit or road construction project to be issued by the TSM, the TSM will:</p> <ol style="list-style-type: none"><li>1. Record the location of the cultural heritage resource,</li><li>2. Evaluate the direct impact of the planned tenure and/or road on the cultural heritage resource considering the factors outlined in Schedule 1 Section 4.0 of the Forest Planning and Practices Regulation,</li><li>3. If the evaluation determines it is necessary, alter the design and/or prescription of the tenure and/or road to conserve, mitigate, or if necessary protect, the cultural heritage resource.</li><li>4. Communicate the outcome of the evaluation to the First Nation whose cultural heritage resource may be affected.</li><li>5. All sensitive information is to remain confidential unless the applicable First Nation agrees to its release.</li></ol>

C) If the TSM becomes aware<sup>2</sup> of a cultural heritage resource in the location of a license, permit or road construction project issued by the TSM, the TSM will modify or cease operations to the extent necessary to protect the resource, until the assessment outlined in B) above is completed.

<sup>1</sup> reasonable effort is defined as a documented written offer to meet to discuss CHR values of importance with the appropriate First Nation.

<sup>2</sup>becomes aware is defined as the TSM receives an email, voicemail, written communication, or written confirmation of a verbal notice that a cultural heritage resource has been identified, and is identified on a map.

**Supporting Information and Records**

Assessments of identified archaeological features and cultural heritage resources are retained for future reference. These assessments are confidential.

**3.2 Education and Outreach**

**SFI Performance Measures and Indicators**

PM 12.2, Ind. 2

**Commitment**

TOC will support educational opportunities that promote awareness of sustainable forest management. TOC has developed a Forest Management Public Education and Outreach Ledger with a summary of activities and events which the TOC has been involved with.

**Current Status**

Examples:

- BCTS corporately is a participant of the BC Market Outreach Network(BCMON)
- BCTS corporately has a certification communications strategy that includes a stakeholder analysis and identifies opportunities to promote SFM.
- BCTS has a corporate commitments document that identifies forest sustainability. This document is available on the BCTS public website.
- A brochure outlining BCTS and its program is available on the BCTS public website.
- TOC has engaged school children by participating in the forestry curriculum as speakers in the classroom or on field trips.
- TOC participates financially through services in-kind to career days and public speaking engagements i.e. Forestry Week.
- TOC maintains a network with other stakeholder groups in the operating area, including the Revelstoke Nordic Ski Club, Revelstoke Snowmobile Society, Golden Mountain Bike Club, commercial heli-skiing operators, and others.

In addition, as an integral part of the Ministry of Forests and Range, TOC indirectly supports public education and outreach through initiatives such as the *BC Forest Information* website (<http://www.bcforestinformation.com>) and the production of brochures, posters, maps and other

publications (<http://www.for.gov.bc.ca/scripts/hfd/pubs/hfdcatalog/index.asp>). Information specific to the Columbia Forest District can be obtained through <http://www.for.gov.bc.ca/dco/>

**Supporting Information and Records**

TOC retains records of the public outreach and education work that it conducts directly. It is compiled in ledger form and is located in the BCTS file system.



Begbie Falls



Blackwater Lake

*Photos: BC Ministry of Forests and Range, Columbia Forest District*

**3.3 Recreation**

**SFI Performance Measures and Indicators**

PM 12.2, Ind. 3

**Commitment**

TOC will support the provision of appropriate recreation opportunities in the operating areas, where consistent with other forest management objectives.

**Current Status**

TOC has worked with local recreation groups, interested stakeholders, the local Ministry of Forests and Range (MFR), Integrated land Management Bureau (ILMB), Ministry of Environment (MoE) and Ministry of Tourism, Sport and the Arts (MoTSA) personnel, Parks Canada and others to identify and support appropriate local recreation opportunities, including:

- Participation in local recreation planning initiatives such as the Golden Backcountry Recreation Access Plan (GBRAC), Limits to Acceptable Change (LAC) process and Columbia Forest District Mechanized Skiing Planning Meetings,
- Liaison and ad-hoc meetings with recreation and community groups,
- Provision of information to recreation groups upon request,
- Planning of deactivation and access considering recreation,
- Trail preservation for hikers, bikers, snowmobiles, etc.
- Protection of designated forestry recreation sites,
- Modification of harvest and road building plans to accommodate recreational values.

<b>Supporting Information and Records</b>
Information regarding the support of recreation opportunities is retained in the following locations: <ul style="list-style-type: none"> <li>• Forest Stewardship Plan – Public Review and Comment Documents,</li> <li>• Meeting minutes,</li> <li>• Correspondence files</li> </ul>

### **3.4 Public Input into Planning Processes**

<b>SFI Performance Measures and Indicators</b>
PM 12.3, Ind. 1, 2
<b>Commitment</b>
TOC is committed to involving the public and appropriate governmental agencies in planning and management activities.
<b>Current Status</b>
TOC creates opportunities to solicit input from local stakeholders and interested parties with regard to its planned forest management practices and operations, examples: <ul style="list-style-type: none"> <li>• Public Comment Form and SFI Inconsistent Practices Form on TOC website</li> <li>• Public review of FSPs and Operational Plans</li> <li>• Stakeholder meetings</li> <li>• Issue-specific interaction i.e. Caribou Recovery Strategy meeting with North Columbia Environmental Society, Wildsight and Mountain Caribou Project</li> </ul> <p>The information obtained through these processes is reflected in the plans as appropriate, and records are retained of the input received and any changes made.</p>
<b>Supporting Information and Records</b>
Information regarding activities relate to public involvement is retained in the following locations: <ul style="list-style-type: none"> <li>• FSP – Public Review and Comment Documents</li> <li>• Post-FSP Operational Plan Referral Documents</li> <li>• Public Feedback Tracker</li> <li>• Correspondence files</li> </ul>

## 4 Research and Development

TOC contributes to research and development within the field of sustainable forestry in B.C. through individual and joint initiatives.

<b>SFI Performance Measures and Indicators</b>
PM 9.1, Ind. 1
<b>Commitment</b>
TOC will support research and development initiatives to improve the health, productivity, and management of forest resources.
<b>Current Status</b>
<p>As an integral part of the Ministry of Forests and Range, TOC supports and has access to research expertise within the Forest Science Program. The Forest Science Program consists of the Research Branch (within Forest Stewardship Division) and three regional Forest Science Teams (within Operations Division). Program researchers work in a range of scientific disciplines in silviculture, growth and yield, ecology, earth sciences, and forest genetics. Forest science research reports and publications are available through the Ministry Library at <a href="http://www.for.gov.bc.ca/hfd/library/">http://www.for.gov.bc.ca/hfd/library/</a></p> <p>Ministry scientists are actively involved in numerous scientific networks and partnerships with other research organizations in B.C., nationally, and internationally. The Forest Science Program receives invaluable assistance through collaborations with and contributions from staff in regional and district offices, and other branches of the Ministry of Forests, including BC Timber Sales. TOC support and assistance consists of liaising with and providing information to researchers on specific issues of interest to the business area, and protecting research sites within its operating areas.</p> <p>BCTS is a member of Feric. Created in 1975, Feric (The Forest Engineering Research Institute of Canada) is a private, non-profit research and development organization and a division of FPInnovations. Feric develops and helps implement forest operational research covering a range of engineering, human, operational and environmental aspects of forestry and wildland fire operations. As a regular member of Feric, BCTS has full voting rights in Feric's advisory committees, full access to Feric's publications and software, general access to Feric staff and library services, and other rights and privileges.</p> <p>TOC directly supports research of relevance to the operating area and the landscape units in which it operates through the BC Forest Investment Account (FIA) program. TOC and other companies in the Revelstoke and Golden TSAs, have developed Land Base Investment Rationales (LBIR) that provide context and focus for FIA land base investments. The LBIRs include an overview of the Timber Supply Area issues that need to be addressed over the short term (3-5 years) for the achievement of the desired future condition of the forests within it (e.g. desirable age class and seral stage distribution, desirable habitat distribution). Specifically, the LBIR identifies BCTS and the Management Unit's needs for research where it can be supported by the FIA Land Base Investment Program. The LBIR can address, for example:</p>

- inventory gaps or the need for updates
- wildlife research
- watershed restoration activities
- insect or disease management, and
- linkages to strategic plans and sustainable forestry management planning.

TOC also works with the following organizations to conduct, collate and/or extend research relevant to the business area:

- Kootenay Spatial Data Partnership (KSDP)
- Southern Interior Silvicultural Committee (SISCO)
- BC Species at Risk Coordination Office (SARCO)

#### **Supporting Information and Records**

TOC direct research and development program investments are recorded in the TOC Research Ledger and the BCTS filing system.

## **5 Wood Purchase**

Not applicable. The Okanagan-Columbia Business Area is a seller of wood to purchasers

## 6 External Initiatives

### 6.1 Western Canadian SFI Implementation Committee

<b>SFI Performance Measures and Indicators</b>
PM 10.2, Ind. 1 PM 12.1. Ind. 1, 2, 3, 4 PM 12.2, Ind. 1 PM 12.5, Ind. 1
<b>Commitment</b>
TOC will work with the Western Canadian (WC) SFI Implementation Committee (SIC) to address areas of common concern and to enhance the practice of sustainable forest management across the province.
<b>Current Status</b>
TOC will support the SIC through the participation and membership of the BCTS Provincial Certification Coordinator (PCC), and through monitoring of SIC work.  The Core SIC Mission is to: <ol style="list-style-type: none"> <li>1. Establish criteria and identify delivery mechanisms for logger and forester training to define what it means to be “SFI trained”;</li> <li>2. Establish and maintain protocols for addressing inconsistent practices;</li> <li>3. Focus landowner outreach efforts on education and technical assistance;</li> <li>4. Focus public outreach efforts on increasing SFI program recognition and support with local opinion leaders and forestry professionals;</li> <li>5. Document progress through a SIC Annual Progress Report to SFI, Inc.; and</li> <li>6. Protect the integrity of the SFI program by: a) ensuring proper SIC service mark usage, b) alerting SFI, Inc. when improper communications or misleading claims are observed, and c) avoiding the appearance of participation or compliance by non-SFI program participants.</li> </ol> <p>WC SIC Operating Principles include:</p> <ul style="list-style-type: none"> <li>• Membership – SFI participants, others in advisory capacity</li> <li>• Purpose – SFI specific promotion and quality control</li> <li>• Organization – SFI participants should develop &amp; share <ul style="list-style-type: none"> <li>• Charter/bylaws</li> <li>• Annual work plan</li> <li>• Budget</li> <li>• Membership list</li> </ul> </li> <li>• Governance – independent committee guided by MOU &amp; Licensing Agreement</li> </ul>
<b>Supporting Information and Records</b>
The efforts of the WC SIC are documented in the WC SIC meeting minutes and available through the BCTS PCC.

**6.2 Ministry of Forests and Range, Operations Division**

<b>SFI Performance Measures and Indicators</b>
PM 1.1, Ind. 1, 2, 3, 4, 5 PM 7.1, Ind. 1 PM 9.2, Ind. 1 PM 12.2, Ind. 3
<b>Commitment</b>
TOC participates in provincial initiatives for forest management, including regulatory or standards development and industry-wide reporting initiatives. TOC also meets with MFR, Operations Division at the local level to discuss issues, standards, etc.
<b>Current Status</b>
<p>There are two primary means by which TOC participates in regional and provincial level initiatives for forest management:</p> <ol style="list-style-type: none"> <li>1. Information and data regarding TOC operations are included in the aggregate data reported in the annual provincial “State of the Forest” report. This report addresses a set of environmental, economic, social, and governance indicators across the province.</li> <li>2. TOC provides data and input to Timber Supply Review process for the Timber Supply Area encompassing the operating areas, and for the province as a whole. This information is used to set annual allowable cut levels for each apportionment within the TSAs, and to set other related forest policy.</li> </ol> <p>Timber harvesting is regulated to meet current management objectives and to ensure a flow of timber at a level that can be sustained over time. This long-term harvest level is based on management regimes and forest practices specific to each forest area. The <i>Forest Act</i> requires a formal allowable annual cut determination for each management unit in the province, every five years. This process ensures that estimates of timber supply are based on current information, land-use designations, and forest policies. British Columbia's chief forester is responsible for setting the allowable annual cut in each of the province's 37 timber supply areas and 34 tree farm licenses. Determining an allowable annual cut is a lengthy and complex process in which the chief forester considers technical forestry reports, analyses, and public review, as well as the government's social and economic objectives and other criteria specified in the <i>Forest Act</i> (Section 8):</p> <p><b>Step 1 • Categorize the landbase</b> The productive forest land in a management unit is separated into the timber harvesting land base and the lands unavailable or inappropriate for timber production. Lands outside the timber harvesting land base still contribute to and are managed for other forest values (e.g., wildlife habitat, old growth).</p> <p><b>Step 2 • Project growth and yield</b> Stand growth and timber yield are projected for each stand, based on current management. These projections are represented as timber yield curves that show the characteristics of a stand (e.g., timber volume per hectare, average stem diameter) at different ages.</p> <p><b>Step 3 • Identify management activities and requirements</b></p>

Current management activities, including those that enhance timber production (e.g., planting), and those that maintain or enhance other values (e.g., wildlife habitat, visual quality), are identified. The amount, timing, and location of each management activity is specified. Due to resource interactions (e.g., effects of timber harvesting on wildlife habitat), it is often necessary to restrict some activities to achieve several objectives. Some management requirements are designed to protect a resource or landscape feature; others are designed to create or enhance a resource characteristic.

#### **Step 4 · Model timber supply based on current management**

Timber supply analysis done by the Ministry of Forests and Range uses the Forest Service Simulator, a computer model that simulates the way a forest grows and is harvested over time. Analysts evaluate the simulation results by examining how much volume was harvested, how much area was treated, and how some key characteristics of the standing forest (e.g., volume of growing stock, the area in each age class) were affected in every decade.

#### **Step 5 · Run sensitivity analyses**

Sensitivity analysis is carried out to evaluate sources of uncertainty in the data and management assumptions used in timber supply analysis. It is used to highlight the factors that most affect analysis results (e.g., where small changes in a management objective can cause large changes in timber supply). Such knowledge helps to establish priorities for collecting new information, and indicates where caution is required in interpreting results.

In setting the allowable annual cut in most management units, the chief forester is choosing a transition strategy from current harvest levels to the long-term harvest level.

In evaluating alternatives, the chief forester must consider the state of the forest, the factors identified in Section 8 of the *Forest Act*, and the minister of forests' statement of the economic and social objectives of the Crown. These objectives include minimizing adjustment costs to communities and limiting decreases in allowable annual cut to those necessary to avoid compromising long-run sustainability.

The chief forester determines how much wood, in aggregate, can be cut in each management unit. Once an allowable annual cut has been determined for a timber supply area, the minister of forests apportions that cut to various forms of agreements (timber tenures) under the *Forest Act*. BCTS has a target AAC which it strives to meet as per government policy.

TOC, through its EMS, also monitors changes to the regulatory requirements and standards in place in the province that affect the company and the operating areas.

#### **Supporting Information and Records**

Records of TOC input to the TSR process are retained in the TSO files.

TOC monitors changes to relevant regulatory requirements and standards.

## 7 Monitoring and Reporting

The TOC will monitor the implementation and effectiveness of this SFMP through several mechanisms.

### 7.1 Compliance Monitoring

<b>SFI Performance Measures and Indicators</b>
PM 11.1, Indicator 3 PM 3.1, Indicator 4
<b>Commitment</b>
TOC is committed to monitoring the implementation and effectiveness of SFMP
<b>Current Status</b>
<p>TOC conducts compliance monitoring of its operations through:</p> <ul style="list-style-type: none"><li>• Project inspections are conducted in accordance with Environmental Operating Procedures (EOP) and at a frequency based on project / activity risk assessment. In the course of these inspections, the TOC will identify and track any potential/ alleged non-compliance of its activities with regulatory requirements.</li><li>• TOC conducts annual audits of the EMS, and will include in these audits an assessment of regulatory non-compliance of the organization within the scope of the activity being assessed in the audit.</li><li>• Monitoring of compliance assessments conducted by regulatory agencies, including the ERA reports produced by the Ministry of Forests, and tracking of any non-compliance incidents identified in these reports.</li><li>• TOC has written and is implementing an Environmental Operating Procedure (EOP) for Incident Reporting and Investigation. This EOP applies to all BA staff involved in supervising and monitoring of LWCP, Licensee, Permittee, and/or Contractor operations. This may include harvesting, Silviculture, road construction, road maintenance works, road deactivation/ rehabilitation works and bridge and major culvert installation, maintenance and removal.</li></ul> <p>TOC develops incident investigation reports for significant non-compliance incidents, and completes root-cause analyses of these events to develop recommendations for corrective or preventive actions.</p>
<b>Supporting Information and Records</b>
Records to be maintained on the project operational or EMS file including some data entries in the TOC data base (Genus).

## 7.2 SFM Monitoring and Reporting

<b>SFI Performance Measures and Indicators</b>
PM 12.6, Ind. 1,2,3 PM 13.1, Ind. 2
<b>Commitment</b>
TOC is committed to monitoring and reporting the implementation and effectiveness of this SFMP
<b>Current Status</b>
TOC monitors and retains data and information necessary to report as required for SFI performance measures and indicators and the SFI annual progress report, as outlined in the “SFI Reporting Requirements – Columbia” table.  This data is compiled by TOC staff on a fiscal year basis, and presented to management in the annual Management Review process. As well, information is provided to BCTS HQ for rollup and reporting to the SFI organization as required.
<b>Supporting Information and Records</b>
Records to be retained with the annual management review/EMS records file including the Genus data base.

## 7.3 Management Review

<b>SFI Performance Measures and Indicators</b>
PM 13.1, Indicators 1,2, 3
<b>Commitment</b>
On an annual basis, the TOC Senior Management (TSM and Operations Manager), SFM Committee and CSO assess the performance of the EMS and this SFMP in an annual management review. A record of the annual management review is retained in the EMS records files.
<b>Current Status</b>
The TOC EMS Manual Chapter 18 describes the purpose, scope, roles, and procedure for the management review.  In regards to the SFI area, the assessment will consider all performance results from monitoring programs, and internal and external audits, against the requirements of this SFMP, the SFI standard, the EMS objectives and targets, and other metrics as appropriate. The review identifies areas requiring improvement or strengthening to better implement and achieve sustainable forest management. These improvements are incorporated in subsequent revisions to the EMS objectives, the SFMP, or other documents.
<b>Supporting Information and Records</b>
A record of the annual management review is retained in the EMS records files

## 8 Integration with EMS

<b>SFI Performance Measures and Indicators</b>
PM 10.1 Indicators 1-4 PM 11.1 Indicators 1, 2 PM 11.2 Indicator 1
<b>Commitment</b>
TOC is committed to maintaining the ISO 14001 Environmental Management System and integrating and building the SFI standard within and from the EMS.
<b>Current Status</b>
<p>This SFMP relies in part on the mechanisms established by TOC under the environmental management systems (EMS) to implement and achieve sustainable forest management. Specific areas of integration are:</p> <ul style="list-style-type: none"> <li>• <b>Roles and Responsibilities.</b> SFM related roles and responsibilities are integrated into the EMS organization charts and responsibility matrix.</li> <li>• <b>Training and Education.</b> The training needs of staff and contractors with regard to the requirements of this SFMP are identified in the EMS training needs matrices. SFI awareness training is completed for all TOC staff affected by SFI implementation.</li> <li>• <b>Licensee, Permittee and Contractor Awareness.</b> Awareness of the SFMP and of the SFI program is incorporated into EMS awareness training materials for LPCs.</li> <li>• <b>Access to Legal and Other Requirements.</b> The EMS has established procedures for maintaining awareness of and provided access to regulatory requirements. These procedures also support the need to track and communicate regulatory and other requirements relevant to the SFMP.</li> <li>• <b>Record Keeping Systems.</b> The EMS records matrix also designates locations and retention requirements for SFMP-related records.</li> <li>• <b>Document Control Systems.</b> The EMS documentation matrix also designates those SFM documents that are controlled, and provides revision dates for control purposes.</li> <li>• <b>Monitoring.</b> Monitoring programs in place under the EMS (as discussed in Section 7 of this SFMP) are also used to monitor the performance of TOC under this SFMP.</li> <li>• <b>Continual Improvement Framework.</b> The EMS provides a framework for the assessing of performance or incidents, determining appropriate corrective or preventive actions, and tracking of those actions to determine if improvements are achieved. The same framework is being applied to the SFMP within TOC operations.</li> <li>• <b>Management Review.</b> The annual management review process within the EMS is used to consider the performance of TOC with regard to this SFMP and the SFI standard.</li> </ul>
<b>Supporting Information and Records</b>
EMS records are filed as per the TOC EMS Records Matrix

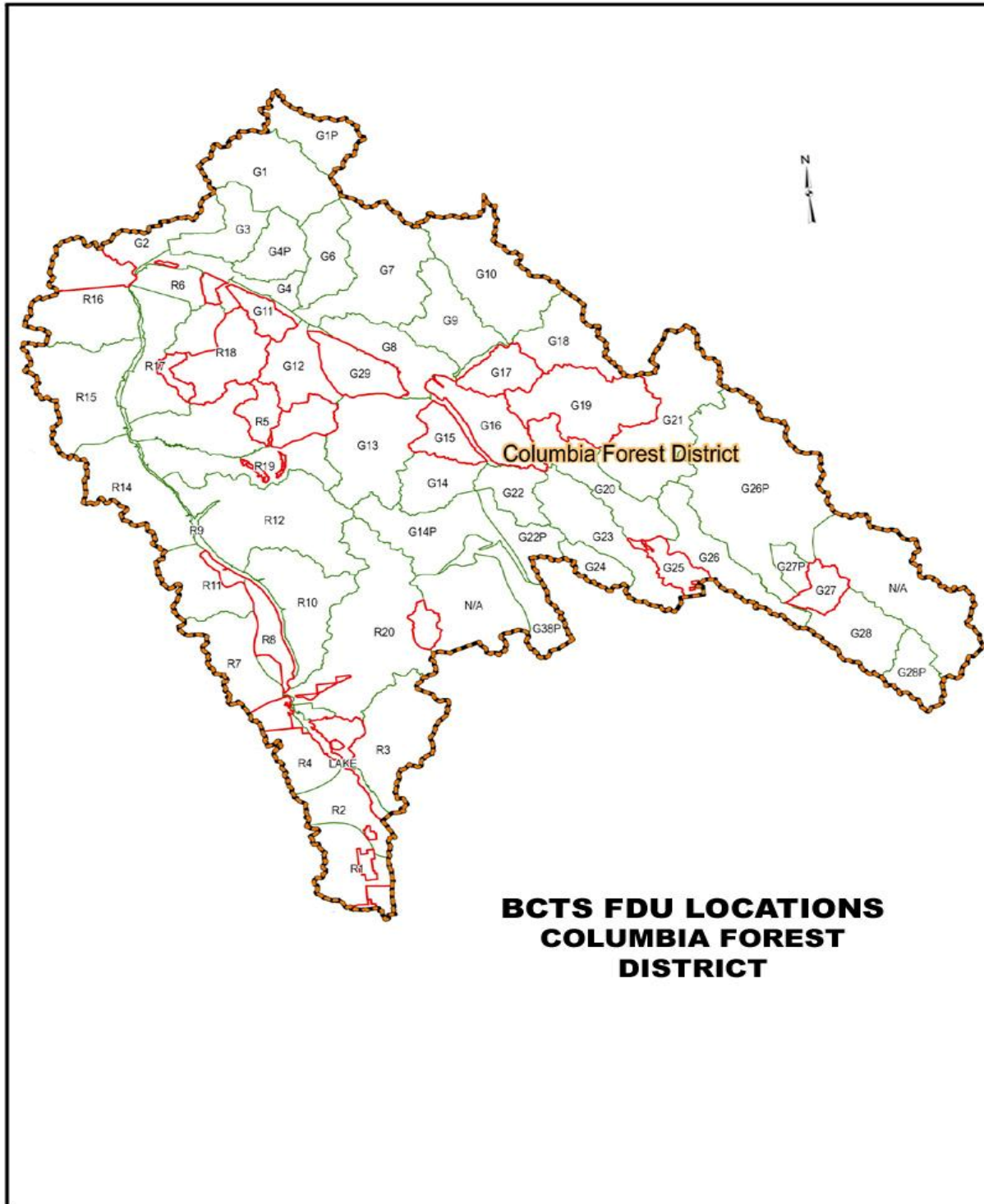
## 9 SFMP Approval

	<b>Preparing Forester</b>
<i>Rein Kahlke, RPF</i> Planning Forester Okanagan-Columbia Business Area	

	<b>Approval Authority</b>
<i>Serg Pereverzoff</i> Timber Sales Manager Okanagan-Columbia Business Area	

## Appendices

### Appendix A: Chart of Operating Areas (BCTS FDU Locations - Columbia)



## Appendix B: Sustainable Forest Management Policy



### **B C Timber Sales SUSTAINABLE FOREST MANAGEMENT POLICY**

BC Timber Sales is committed to managing and administering forest management activities on our operations in the **Columbia Forest District** through effective measures that ensure *sustainable forest management*.

#### **It is the policy of BC Timber Sales to:**

- Conduct our forest management activities to comply with relevant legislation, regulations, policies and other requirements to which the organization subscribes;
- Practice and promote scientifically based sustainable forest management that is environmentally, socially and economically responsible;
- Maintain a framework that sets and reviews environmental objectives and targets;
- Review SFMP performance measures to ensure protection of water and riparian zones, soils and forest productivity, biological diversity, and forest and lands of special significance;
- Provide opportunities for First Nations to participate in forest management planning activities in a manner that respects their aboriginal rights and interests;
- Prevent pollution associated with our forest management activities;
- Monitor and evaluate SFM practices and key BCTS operations. Implement appropriate changes for the purposes of continual improvement;
- Promote a safe and healthy work environment for staff, clients, and the public;
- Communicate BCTS business activities and policies to all staff and make them available to First Nations and the public.

*Original Signed by  
Serg Pereverzoff*

---

*Date November 6, 2007*

**Timber Sales Manager  
Okanagan-Columbia Business Area**