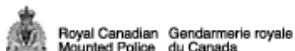




Ministry of Forests and Range
Ministry of Transportation & Infrastructure
Commercial Vehicle Safety Enforcement



Canfor Hotline:
250-561-8467

Forestry TruckSafe Hotline:
250-562-3215

YRB Road Maintenance Hotline:
1-800-218-8805

WorkSafeBC Hotline:
1-888-621-7233

November 30, 2009

To residents of the Nukko Lake; Ness Lake; Reid Lake; Vivian Lake; Saxton Lake; Chief Lake areas:

In follow up to the public meeting held at Nukko Lake School on November 12th, 2009 all residents in the area are being advised of the logging and log hauling activities that will be taking place in the area this winter.

This winter's level of hauling activity through the communities will be reduced significantly from 2008/09, and in recognition of the community's safety concerns, appropriate steps have been taken. Approximately 18,500 loads of logs will be coming out of the Chief Lake road area beginning November 30 through until March 30, 2010. This works out to roughly 194 trucks per day, 5 days per week. The volume breakdown by road system is; Moldowan FSR 25-40 loads/day, Reid Lake connector Road 25-40 loads/day, Kay Kay FSR 43-80 loads/day, and the Teardrop-Chief Lake FSR 134 loads/day. For most operations there will be a two week shut-down over the Christmas holidays.

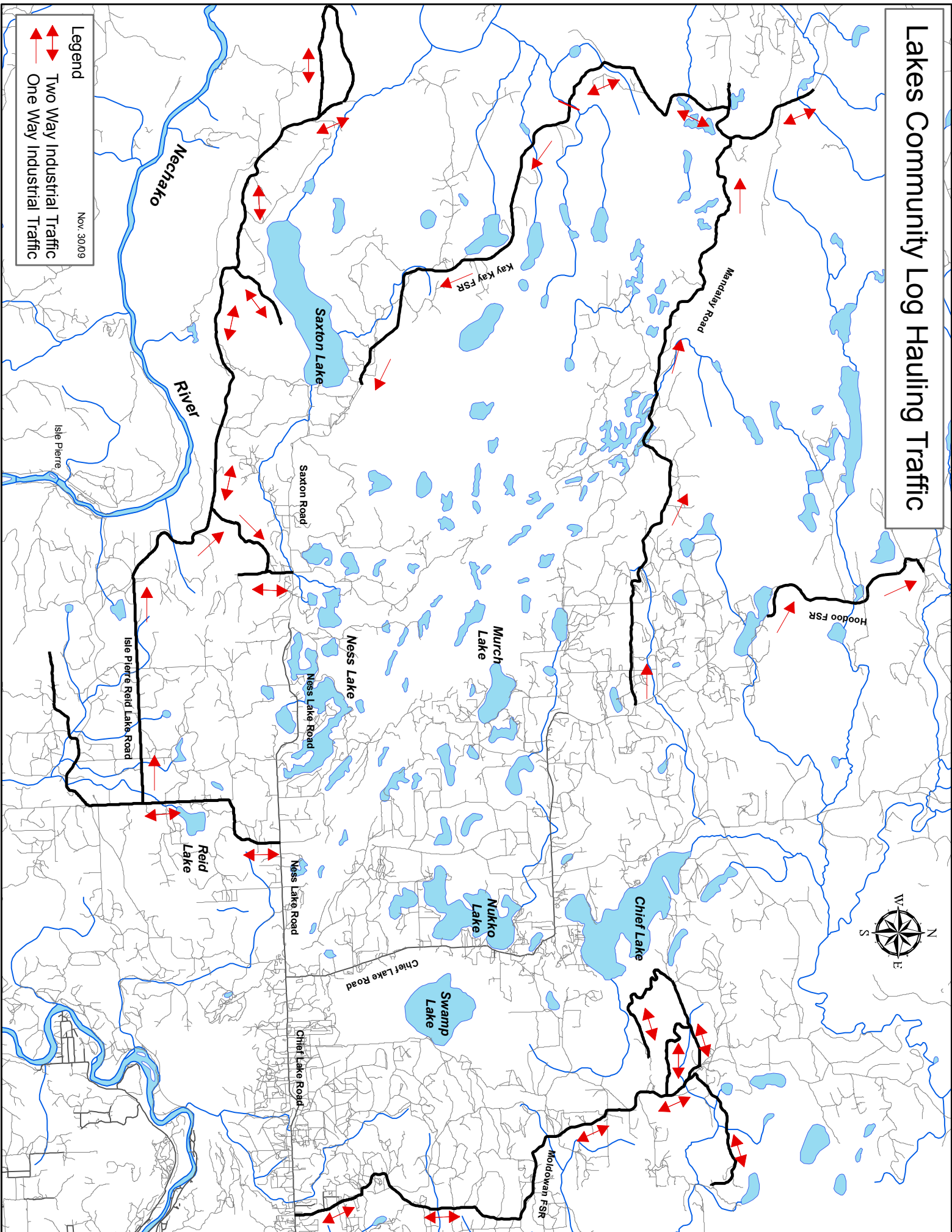
BCTS along with the mills, contractors and truckers are working together to ensure they are doing everything possible to keep the roads safe for all road users during this time, including:

- Developing one-way circle routes for forestry traffic to avoid congestion
 - 1) Empty in the Mandalay Road and loaded out the Kay Kay and Saxton Roads.
 - 2) Empty in Reid Lake Road and loaded out the Reid Lake Connector.
 - 3) Empty in the Hoodoo FSR and loaded traffic joining into two-way traffic on the 300 Road.
- Installing a speed reader board at the school zone.
- Increased enforcement of speeding and road safety of all vehicles by RCMP and Commercial Vehicle Safety Enforcement officers.
- Publishing hotline numbers for reporting concerns, near misses, unsafe conditions.
- Informing forest industry workers about Nukko Lake school bus times.

Cooperation and communication between all of us will help make this busy season as safe as possible. We all need to do our part – slow down, drive to conditions, and be prepared for heavy traffic. Please don't hesitate to call any of the safety hotline numbers on the left if you have any concerns. The more details you can provide, (eg: truck plate numbers) the better we can respond.

Thank you for your help and understanding.

Lakes Community Log Hauling Traffic



Nov. 30/09

Legend

- Two Way Industrial Traffic
- One Way Industrial Traffic

