

Legend

PLANIMETRY

- Flightline / Photo Center MB87012
- Creek (Indefinite)
- Reservoir
- Wetlands
- Domestic Water Intake
- Highway
- Gravel Road
- ML Built Road
- ML Proposed Road
- Trail
- Bridge
- Transmission Line
- Fence
- Flume/Ditch
- Pipeline

TOPOGRAPHY

- Index Contour
- Intermediate Contour
- Indefinite Contour
- Spot Elevation

FOREST COVER

- Potthook
- Scrub
- Logged
- Planted
- Burned

BOUNDARIES

- Woodlot
- Proposed Block
- Riparian Reserve Zone
- Riparian Management Zone
- Wildlife Tree Patch
- Timber Leave Area

STREAM CLASSIFICATION

- Class S1 - S4
- Class S5 - S6

FOREST COVER LABEL

123E# - POLYGON NUMBER/ESA CODES

CF(SH) - SPECIES COMPOSITION

2 - AGE CLASS CODE

123E# - HEIGHT CLASS CODE

CF(SH) 1 - STOCKING CLASS CODE

2101-20 - CROWN CLOSURE

1 - SITE INDEX

20 - SITE INDEX

SPECIES SYMBOLS

- F - Douglas Fir
- C - Western Red Cedar
- H - Hemlock
- B - Balsam
- S - Spruce
- Sh - Black Spruce
- Cy - Yellow Cedar
- Pw - Western White Pine
- Da - Whitebark Pine
- P1 - Lodgepole Pine
- Y - Yellow Pine
- L - Larch
- Ct - Cottonwood
- D - Red Alder
- Mb - Broadleaf Maple
- Bl - Birch
- As - Aspen

AGE CLASS CODES

CODE	LIMITS (years)	HEIGHT CLASS CODES	LIMITS (metres)
1	1 - 20	1	0 - 10.4
2	21 - 40	2	10.5 - 19.4
3	41 - 60	3	19.5 - 28.4
4	61 - 80	4	28.5 - 37.4
5	81 - 100	5	37.5 - 46.4
6	101 - 120	6	46.5 - 55.4
7	121 - 140	7	55.5 - 64.4
8	141 - 250	8	64.5+
9	251+		

CROWN CLOSURE CLASS CODES

CODE	LIMITS (percentage)
0	0 - 5
1	6 - 15
2	16 - 25
3	26 - 35
4	36 - 45
5	46 - 55

STOCKING CLASS CODES

CODE	APPLIES TO	LIMITS (no. of trees / ha.)
0	all mature	n/a
1	all mature	greater than 70% 27.5 cm d.b.h.
2	all mature	less than 70% 27.5 cm d.b.h.
3	mature with leading	less than 70% 27.5 cm d.b.h. or less than 50% 27.5 cm d.b.h. and are greater than 12.1 cm d.b.h.
4	mature with leading	less than 50% 27.5 cm d.b.h. and are greater than 12.1 cm d.b.h.

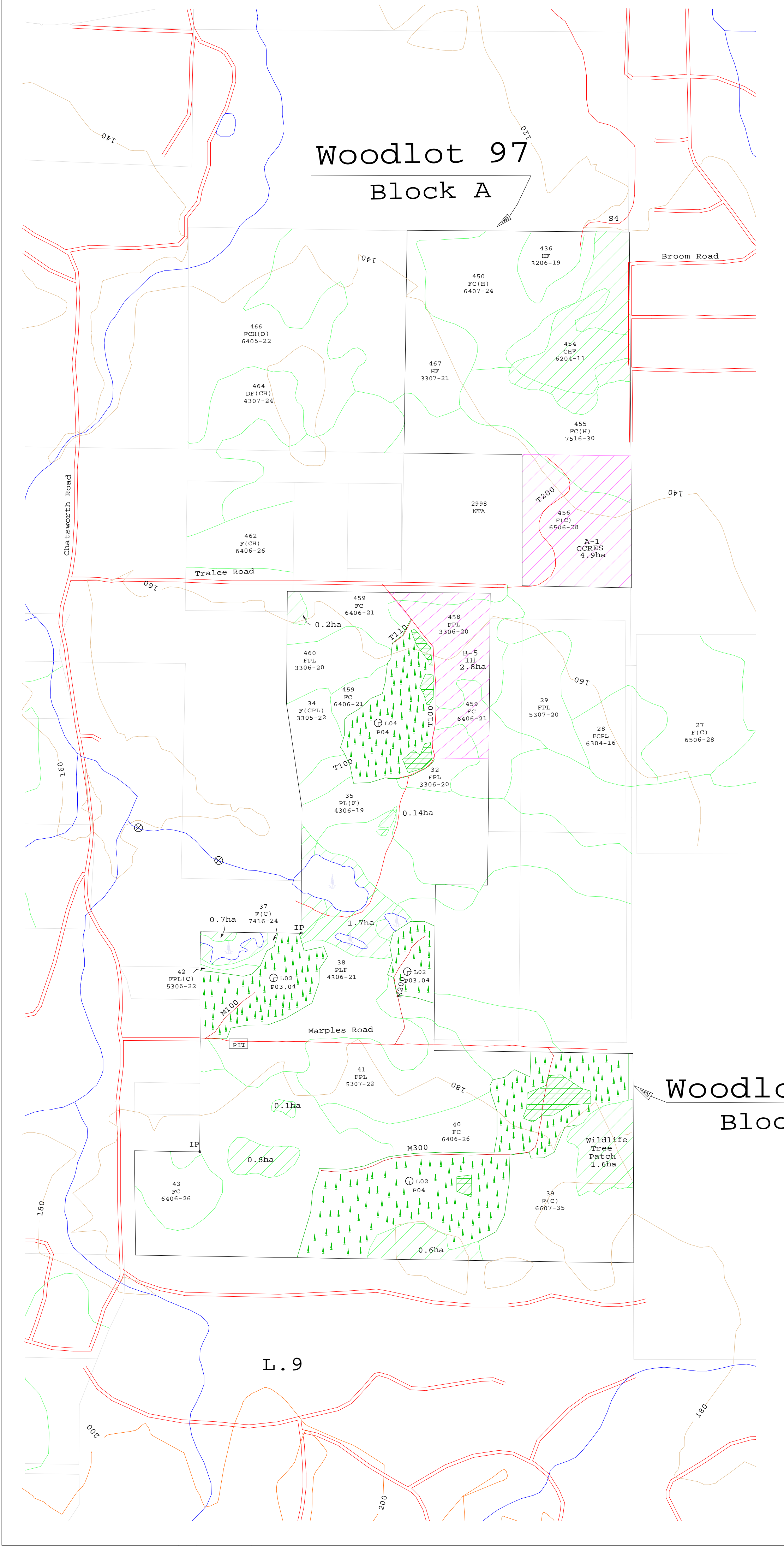
SILVICULTURE SYSTEM

- CLRCT - Clearcut
- OCRES - Clearcut with reserves
- SRETT - Seed tree
- SHELT - Shelterwood
- PCHCT - Patch cut
- IMCUT - Intermediate cut

HARVESTING METHOD

- DC - Overhead cable
- A - Aerial
- GB - Ground base (conventional)
- H - Horse

Woodlot 97
Block A



Woodlot 97
Block B

Woodlot 97
Block C

Woodlot 97
Block D

