

January 22, 2007

Kalum Forest District, Operations Division

Technicians' Primary Areas and Responsibilities

Map
Area

- A Daniel Belisle – All Permits accessed by Hwy 37 north of Cranberry Junction.
All Small Scale Salvage (SSS) in the Kalum Forest District.

- B Rick Alpaugh – All Permits accessed by the Nisga'a Hwy (Hwy 113) or the Cranberry Connector.

- C Richard Kean – Coast Tsimshian Resources Permits accessed by Hwy 16 and Hwy 37 (to Lakelse Lake)

Mary Moran – A&A and Kitselas Forest Products Permits accessed by Hwy 16 and Hwy 37 (to Lakelse Lake).

- D Richard Kean – All Permits accessed by Hwy 37 south of Lakelse Lake (onshore).

- E Mary Moran/Ralph Ottens – Shared Responsibility - All Permits south of Kitimat (offshore).



KALUM FOREST DISTRICT

Tenures Zone Officers

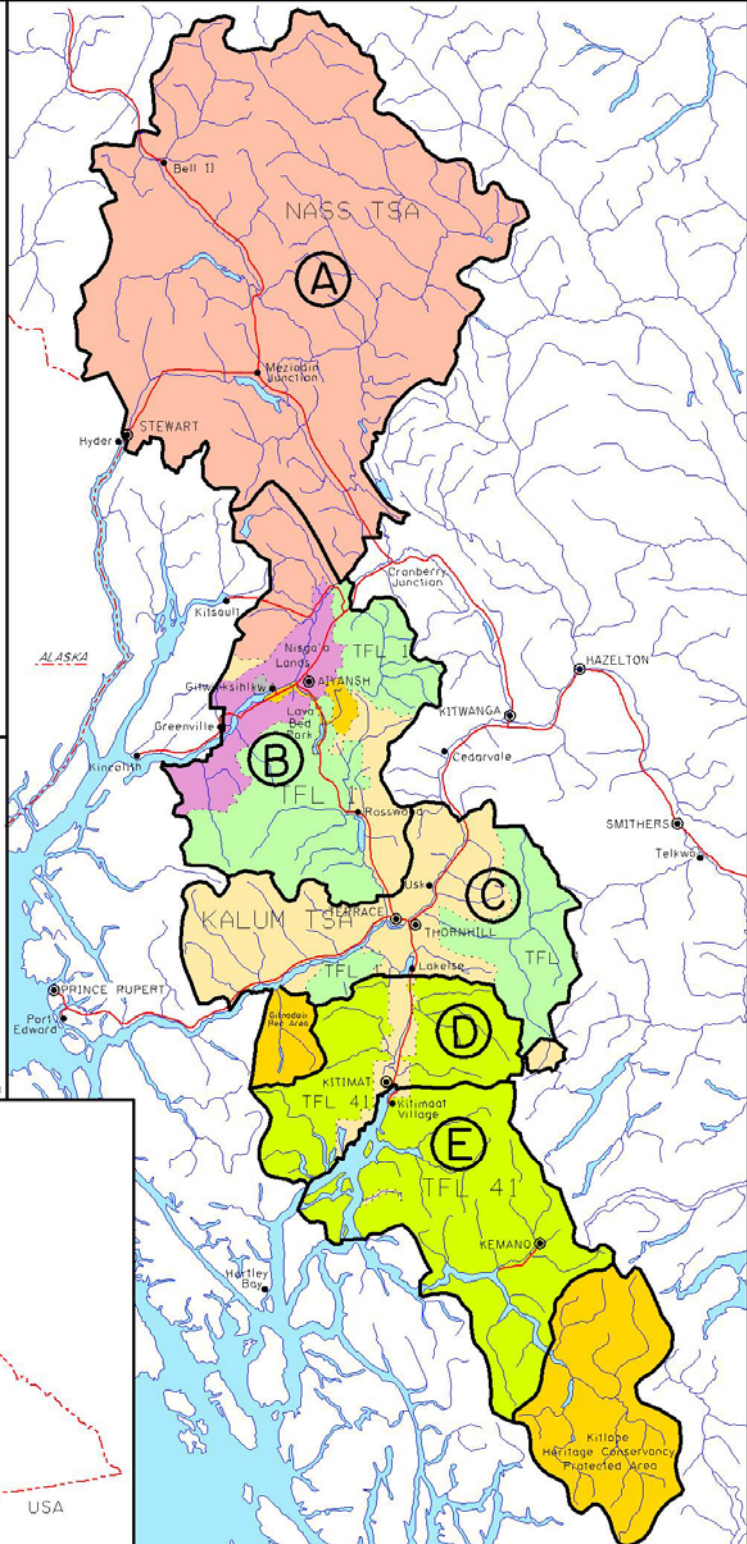
- (A) Daniel Belisle
- (B) Rick Alpaugh
- (C) Richard Kean/Mary Moran
- (D) Richard Kean
- (E) Mary Moran/Ralph Ottens



LEGEND

- Nass TSA
- Kalum TSA
- TFL 1
- TFL 41
- Parks
- Nisga'a Lands
- Ecological Res

R.L. March, 24th 2003



Map 98-771-0007/2771-0005-0002-0001-0005