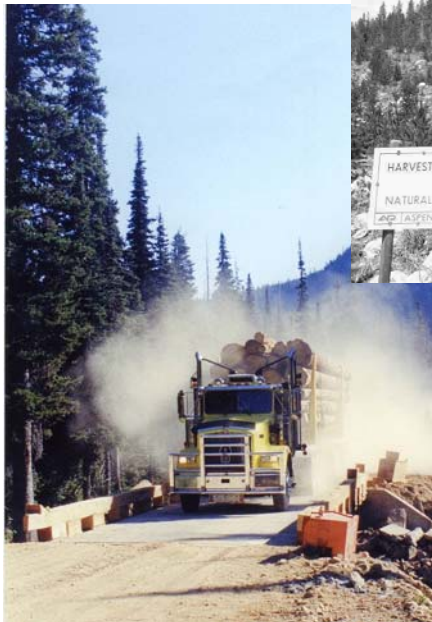


Forest Certification in the Merritt Timber Supply Area

An Overview



Topics of Discussion

- Forest Certification:
 - What is it?
 - Why do companies become certified?
- What is the Merritt Timber Supply Area?
- Who is involved in Forest Certification in the Merritt TSA?
- How does a forest become “certified”?
- The Sustainable Forest Management Plan
- What Does Certification Mean to Me?
- How Can I Become Involved?
- Contact Information



Forest Certification: What is it?

- An objective and impartial procedure to assess the performance of forest management in relation to the requirements of a forest management standard
- Ensuring actions taken today do not restrict future generations ability to enjoy ongoing environmental, social and economic value from our forests



Forest Certification: What is it?

- Verified by an independent third party via audits
- Audits focus on the outcome of forest activities with a check of on-the-ground results
- The Canadian Standards Association's forest management standard is used in the Merritt Timber Supply Area
 - The CSA certification standard is Canada's National Standard for Sustainable Forest Management.
 - It is designed by Canadians, for Canadian conditions
 - Was approved as the National Standard in 1996 and updated in 2002



Forest Certification: Why?

- Why are forest companies are becoming certified?
 - Address the demands and challenges presented by the environmental movement
 - Ensure market access
 - Position a company as environmentally and socially responsible



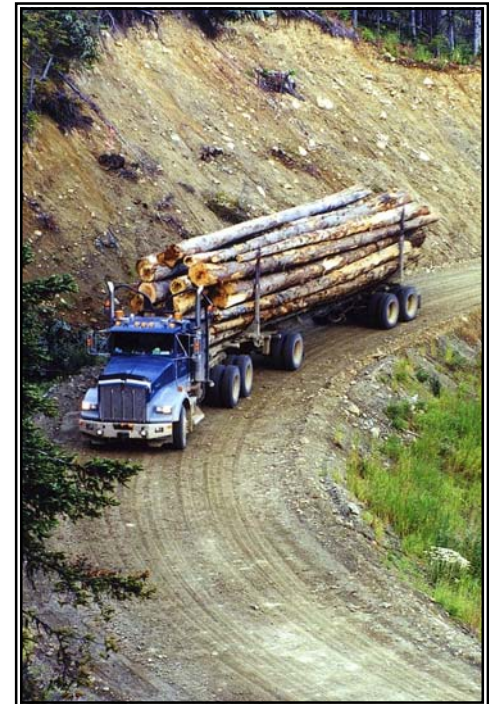
Forest Certification: Why?

- Why are forest companies becoming certified?
 - Independent endorsement of environmental and forest management
 - Improved operational efficiencies
 - Requires a structured approach to managing potential impacts from forestry
 - Improved management of environmental risk

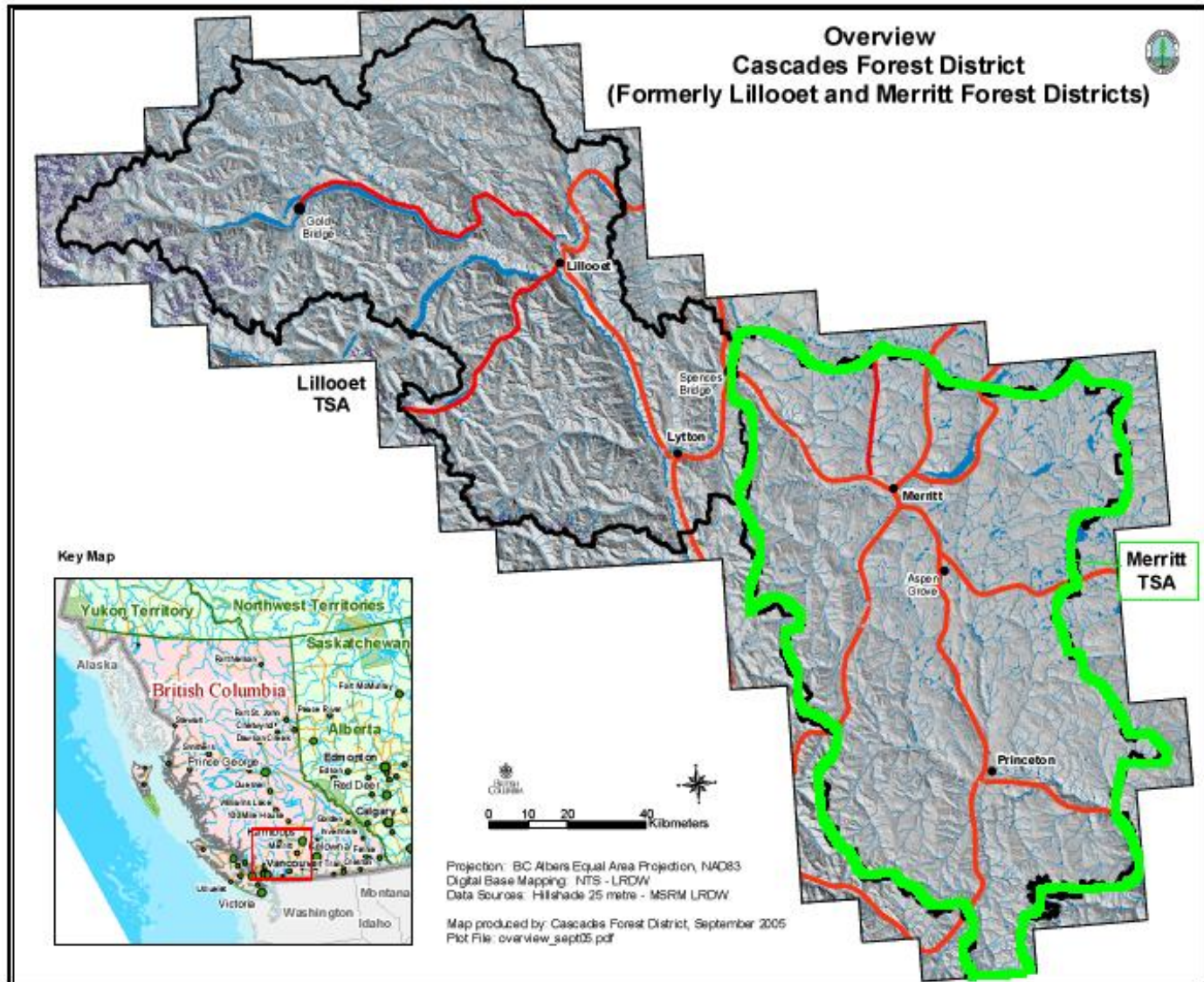


What is the Merritt Timber Supply Area?

- A geographic area covering 1.2 million ha
- The Merritt Timber Supply Area (Merritt TSA) is the old Merritt Forest District
- It is now included in the Cascades Forest District
- The Merritt TSA includes:
 - Merritt
 - Princeton
 - Lower Nicola
 - Douglas Lake

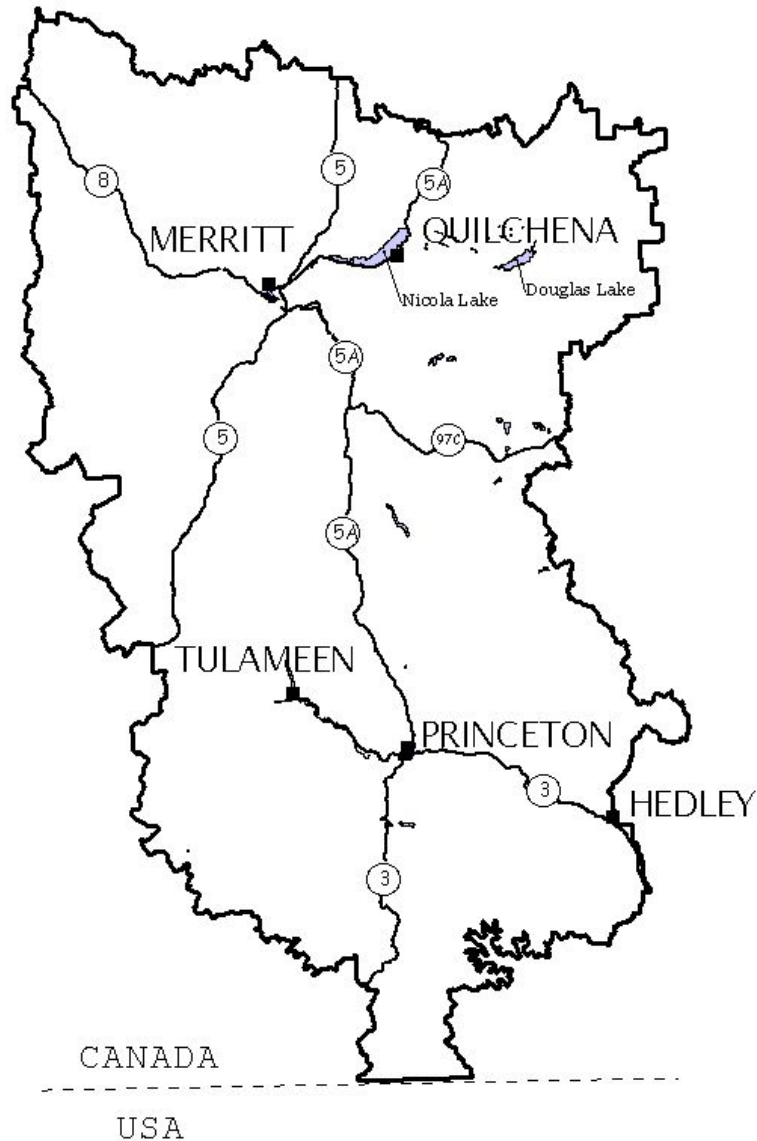


What is the Merritt Timber Supply Area?



What is the Merritt Timber Supply Area?

Merritt
Timber
Supply
Area



Who is involved in Forest Certification in the Merritt TSA?

- There are two main groups of participants:
 - **Forest Companies**
 - Major licensees, including BC Timber Sales, and those with non-replaceable forest licenses
 - **Public**
 - Educators
 - Resource Industry workers
 - First Nations
 - Recreational Users
 - Business owners
 - Anyone with an interest in sustainability of resources and communities
- Government agencies provide information support



Who is involved in Forest Certification in the Merritt TSA?

- The participants together form a Public Advisory Group (PAG)
- All PAG members have an equal voice
- Anyone from the public can be on the PAG



*Public Advisory Group
reviewing temperature
sensitive stream
management on 2003
Field Tour*

How does a forest become “certified”?

- 5 Main Steps:
 - 1) Create a Sustainable Forest Management Plan (the Plan)
 - 2) Implement the Plan
 - 3) Monitor and report on the Plan requirements
 - 4) Have the Plan and the implementation checked by independent professionals, the auditors
 - 1) If acceptable, the timber harvested from the area covered by the Plan becomes “certified”
 - 2) If not acceptable, then the deficiencies are addressed and the Plan is re-checked
 - 5) Review and Improve the Plan, repeat Steps 2-5 on an annual basis



Sustainable Forest Management Plan

- For the Merritt TSA a general Sustainable Forest Management Plan is created as a joint effort of the Public Advisory Group
- The general Plan covers all the Crown forest land in the Merritt TSA, approximately 1 million hectares
- The PAG reviews the general Plan every year and makes changes as required



Sustainable Forest Management Plan

- A Sustainable Forest Management Plan must address specific areas required by the standard
- These are broken into 6 Criteria and 17 Elements.
- Examples are:
 - Criteria: *Conservation of soil and water resources*
 - Element: *Conserve soil resources by maintaining soil quality and quantity*



Sustainable Forest Management Plan

- Values, objectives, indicators and targets are developed at the local level by the Public Advisory Group
 - Example Value for Soil Criteria: “*Soil Productivity*”
 - Example Objective for Soil Criteria Value: “*Soil qualities that sustain forest ecosystem productivity*”
 - Example Indicator for Soils: “*Annual percentage of cutblock areas in permanent access structures (eg. roads and landings)*”
 - Example Target: “*Less than 7% on average, of cutblock areas in permanent access structures*”



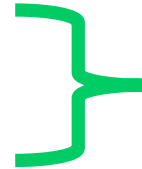
Sustainable Forest Management Plan

- Also developed are the monitoring, measuring and reporting requirements for each of the indicators
 - Example Reporting: “*Licensees will report ha of permanent access structures and total gross cutblock area in ha’s*”
- All this information is contained in the detailed SFM Plan



Sustainable Forest Management Plan

- Criteria (6)
 - Elements (17)
-



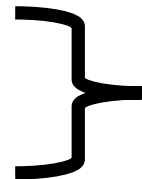
Set as part of Standard, can not be changed locally

- Values
 - Objectives
 - Indicators
 - Targets
-

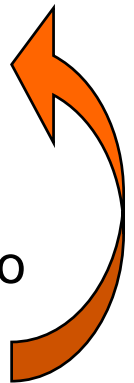


Developed with local Public Advisory Group (PAG)

- Monitor & Report



Licensee, reporting back to public advisory group



Sustainable Forest Management Plan

- Each Licensee then takes the general Plan and modifies it to reflect their own internal procedures. These changes include:
 - Setting the Defined Forest Area (DFA), typically the assigned operating area of the licensee. It is the timber harvested in the DFA that becomes “certified”
 - Setting their internal monitoring and reporting procedures
- The goals of the general Plan are not changed in the licensees individual Plans
- Each Licensee is responsible for having their Plan audited and reporting back to the PAG



What Does Certification Mean to Me?

- Forest Certification has several benefits to the population of the Merritt Timber Supply Area:
 - Continued and Sustainable forest activity
 - Employment
 - Community stability
 - Local values used to help manage the forests

*Harvesting during PAG
field tour*



How Can I Become Involved?

- Become an active member of the Public Advisory Group:
- 3-4 meetings (4 hours each) each year
- 1 field trip to review on-the-ground results of sustainable forest management
- A chance to participate during the professional checks (audits) of the Plan

*PAG looking at root rot
and mule deer winter
range*



Contact Information

- For more information, contact Jennifer Lisle at 378-8218
- Or check out the web site at:
http://www.for.gov.bc.ca/dcs/SustainableForestry/SustainableForestry_DME.htm

Acknowledgments

Photos and maps supplied by the BC Ministry of Forest and Range, Weyerhaeuser Canada, Tolko Industries Ltd. and Will Sloan

PowerPoint template from the International Model Forest Network



Aspen Planers Ltd.



Weyerhaeuser



BCTS
BC Timber Sales