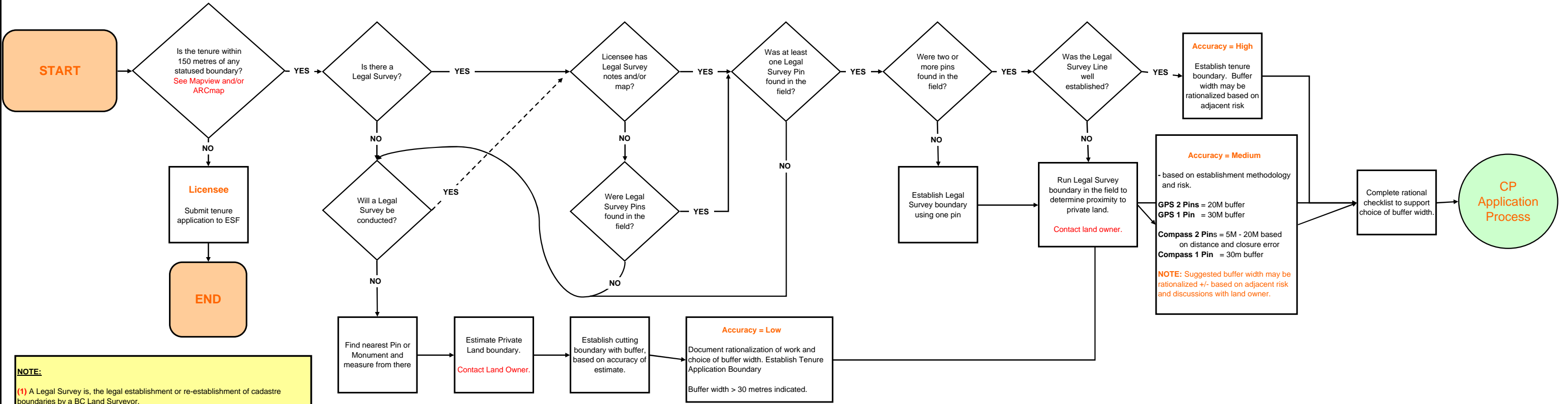


Business Process - Harvesting Adjacent to Private Land



NOTE:
 (1) A Legal Survey is, the legal establishment or re-establishment of cadastre boundaries by a BC Land Surveyor.
 (2) A buffer is, a section of land between a parcel of land in question and cutblock/road.
NOTE: no boundary marking standards in law, See boundary marking guidebook for details.